

Obsidian House 366E Canterbury Road

DENSOLE, Folkestone
CT18 7BG

£335,000 FREEHOLD

FOR SALE WITH BURNAP + ABEL... Welcome to the new development on Canterbury Road in Densole, where you will find 3 stunning chalet bungalows that redefine eco-friendly living. These energy efficient homes boast high-end finishes throughout, including a spacious lounge/diner perfect for entertaining family or guests. A stylish & modern kitchen with all the amenities you could ever need creates the heart of this home. Each bungalow features two bedrooms, providing plenty of space for a growing family or hosting guests. The sleek bathroom adds a touch of luxury to everyday living. With off-road parking for 2 vehicles, convenience is at your doorstep. Don't miss out on this opportunity to live in a beautifully designed and environmentally conscious home in the peaceful surroundings of Densole. Schedule a viewing today and imagine yourself living in this elegant retreat.



Entrance Hall

Lounge/Dining Room

20' 3" x 13' 0" (6.17m x 3.96m)

Kitchen

12' 0" x 11' 11" (3.66m x 3.63m)

W.C

First Floor Landing

Bedroom One

16' 9" x 8' 6" (5.11m x 2.59m)

Bedroom Two

12' 5" x 9' 11" (3.78m x 3.02m)

Bathroom

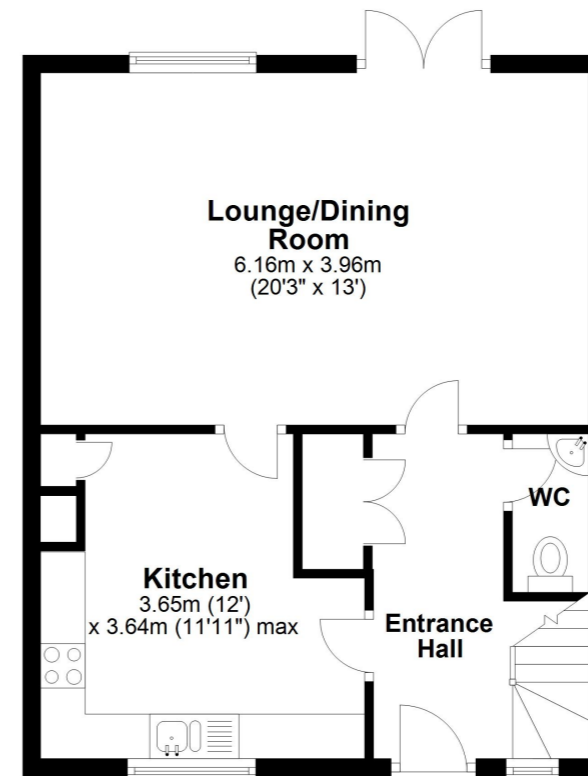
9' 11" x 7' 3" (3.02m x 2.21m)

Rear Garden

Off Road Parking

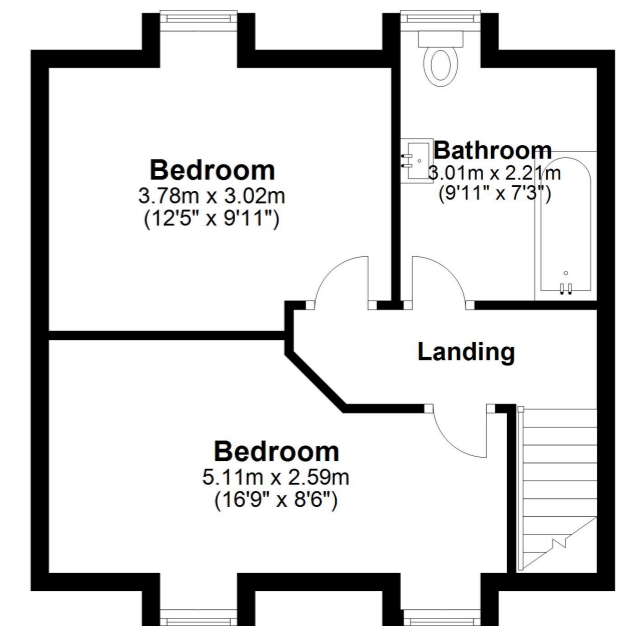
Ground Floor

Approx. 47.5 sq. metres (511.2 sq. feet)



First Floor

Approx. 36.5 sq. metres (392.5 sq. feet)



Total area: approx. 84.0 sq. metres (903.7 sq. feet)

Whilst every attempt has been made to ensure the accuracy of the floor plan contained here, measurements of doors, windows, rooms and any other items are approximate and no responsibility is taken for any error, omission or mis-statement. This plan is for illustrative purposes only and should be used as such by any prospective purchaser.
Plan produced using PlanUp.

