



BarrettMove



9 Beechtree Avenue, Marlow, Buckinghamshire SL7 3NH
Offers in the region of £625,000 - Freehold



PROPERTY SUMMARY

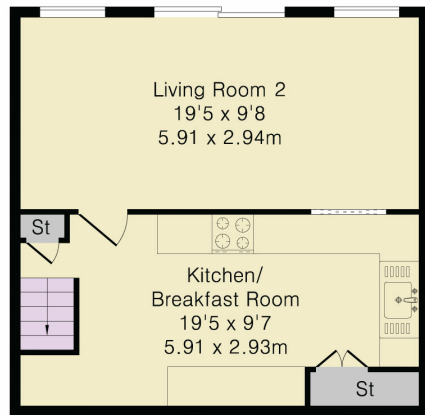
Barrett Move presents this spacious semi-detached house in a popular road in Marlow Bottom close to Burford School. In need of some updating this will make a lovely family home.

POINTS OF INTEREST

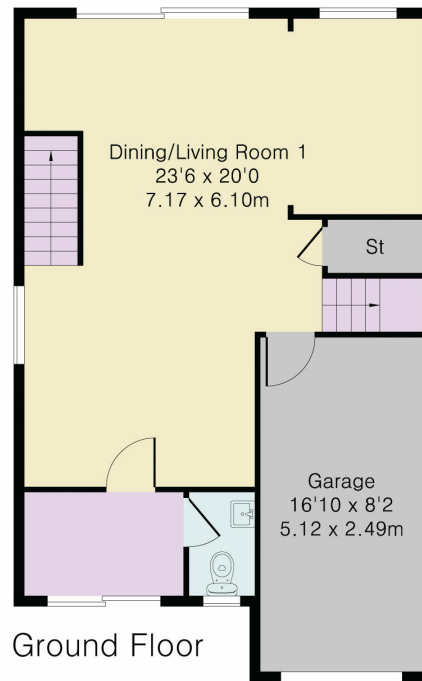
- *****CHAIN FREE*****
- No central heating
- Renovation potential
- Lovely views
- Balcony off lounge
- Garage and off road parking



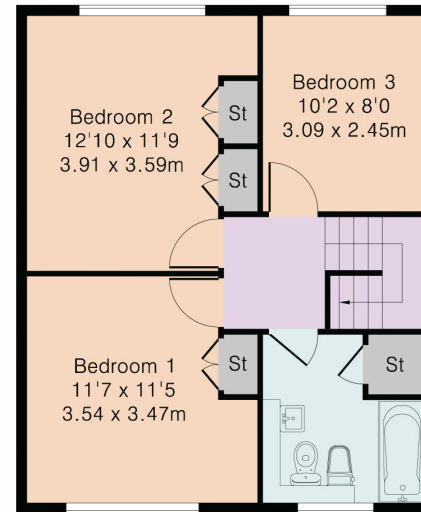
Approximate Gross Internal Area 1493 sq ft – 139 sq m
 Lower Ground Floor Area 391 sq ft – 36 sq m
 Ground Floor Area 612 sq ft – 57 sq m
 First Floor Area 490 sq ft – 46 sq m



Lower Ground Floor



Ground Floor



First Floor



Although Pink Plan Ltd ensures the highest level of accuracy, measurements of doors, windows and rooms are approximate and no responsibility is taken for error, omission or misstatement. These plans are for representation purposes only as defined by RICS code of measuring practise. No guarantee is given on total square footage of the property within this plan. The figure icon is for initial guidance only and should not be relied on as a basis of valuation.

Energy Efficiency Rating		Current	Potential
<i>Very energy efficient - lower running costs</i>			
(92+)	A		
(81-91)	B		82
(69-80)	C		
(55-68)	D		
(39-54)	E		
(21-38)	F		
(1-20)	G	20	
<i>Not energy efficient - higher running costs</i>			
England, Scotland & Wales			
EU Directive 2002/91/EC			