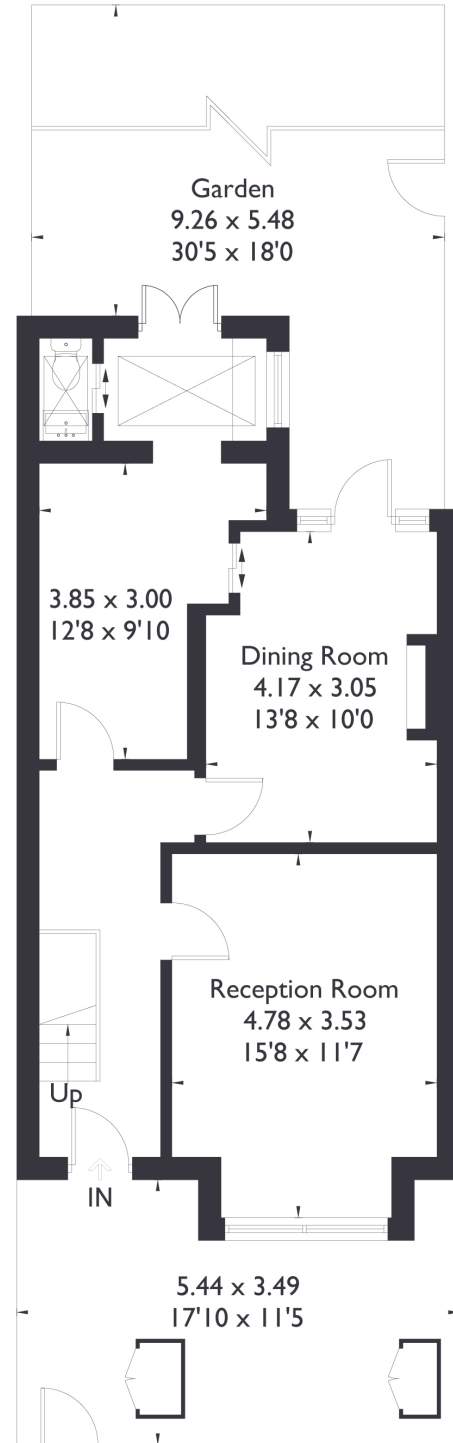
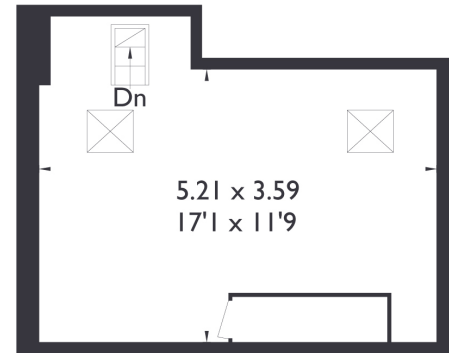


Windermere Road, W5

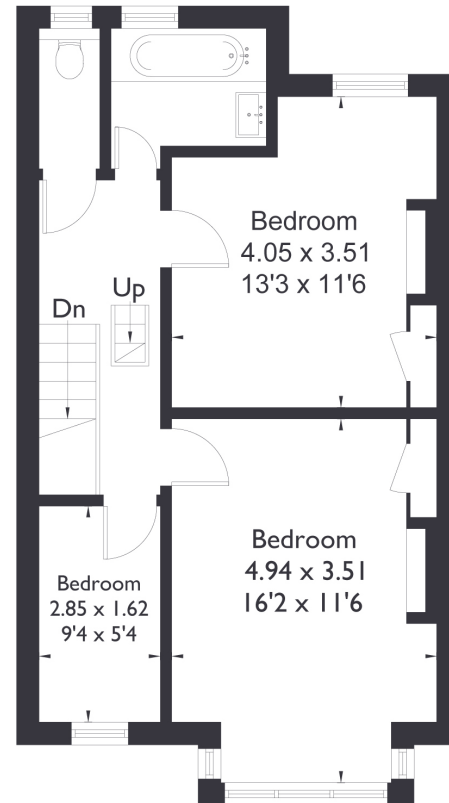
Approximate Floor Area = 121.1 sq m / 1303 sq ft



Ground Floor



Loft Floor



First Floor



3 BEDROOM HOUSE

Windermere Road, W5

£995,000

Welcome to this charming three bedroom property, featuring a spacious layout and a convenient downstairs W/C. With generously sized rooms throughout, this home boasts an inviting south-facing garden that enjoys plenty of sunlight all day long. Original features add character, and natural light fills every corner. Upstairs, you'll find a well appointed family bathroom, two spacious double bedrooms, and a single bedroom at the front of the house.

FEATURES

- Two Bedrooms
- One Bathroom/ Downstairs W/C
- Separate Kitchen/Dining
- Walpole/Lammas Park (2 min walk)
- Fielding Primary School
- Northfields Station
- EPC Rating E



3 BEDROOM HOUSE

Windermere Road, W5

This property also offers excellent potential for expansion STPP.

Ideally located just a five minute walk from Northfields Station and Lammas Park, this home is also close to Northfields' vibrant amenities. South Ealing and Ealing Broadway are easily accessible on foot or by car, making it a fantastic choice for both convenience and lifestyle. Plus, this property falls within the sought-after catchment area for Fielding Primary School, making it an ideal choice for families. EPC Rating E.

