



T: 01909 509001  
E: [info@bartropanddilks.co.uk](mailto:info@bartropanddilks.co.uk)  
W: [www.bartropanddilks.co.uk](http://www.bartropanddilks.co.uk)  
A: 78 Bridge Street, Worksop, S80 1JA

FOR SALE

£425,000

Silver Birches Steetley, Worksop, Nottinghamshire. S80 3DZ



Offered for sale within our Signature Range and with no chain being involved is this one off opportunity to purchase 'Silver Birches' that is well placed within the Steetley area and within access to the M1 and A1 motorway networks. In need of general upgrading and modernisation, the bungalow offers great potential and is set on ground of approx 1/3rd acre. Having double glazed windows and a Mitsubishi Electric Renewable Heating Source, the accommodation comprises of; front facing dining kitchen being 7.67m in length, delightful rear lounge that overlooks the gardens, Inner hallway, three bedrooms, bedroom two used as occasional sitting/additional kitchen, shower room and separate W.C. Outside; most stunning and well established grounds of approx 1.3 acre with many outbuildings and garden sheds. There is a driveway and reversing space providing ample parking and garage. Viewing is most highly recommended to fully appreciate.



## Accommodation

### Dining Kitchen 7.67m x 3.23m (25' 2" x 10' 7")

With side entrance door, front and side facing windows. The kitchen with wall and base fitted units, worksurfaces, cooker space, plumbing for a dishwasher, storage. There is a central island with two bowl sink unit with mixer tap, plumbing for an automatic washing machine. Door to the lounge.

### Lounge/Dining Room 7.12m x 3.70m (23' 4" x 12' 2")

With a feature stone fireplace, side facing window, two central heating radiators, rear facing sliding patio doors overlooking the gardens.

### Inner Hallway

With central heating radiator, cylinder airing cupboard.

### Bedroom One 3.76m x 3.09m (12' 4" x 10' 2")

With fitted wardrobes to one wall, rear facing window, central heating radiator.

### Bedroom Two 2.96m x 2.55m (9' 9" x 8' 4")

With fitted sliding wardrobes to one wall, central heating radiator, front facing window.

### Bedroom Three 3.78m x 3.20m (12' 5" x 10' 6")

This bedroom has been used as a occasional lounge and kitchen area with fitted units, central heating radiator, side facing French doors to the gardens, double doors lead into bedroom two, central heating radiator.

### Shower Room

With double shower cubicle, wash hand basin, front facing window, central heating radiator.

### W.C

With a low flush w.c, front facing window.

## Outside

### Gardens/Grounds

Believed to be set on grounds on approx 1/3 acre, the gardens and fully established and create delightful areas for keen gardeners or families. There are mature trees and shrubbery, sheds, potting sheds, greenhouses, summerhouse. Only by viewing can you fully appreciate what is on offer.

### Driveway

With pull on driveway to the front with ample parking and reversing space to re-enter the country lane.

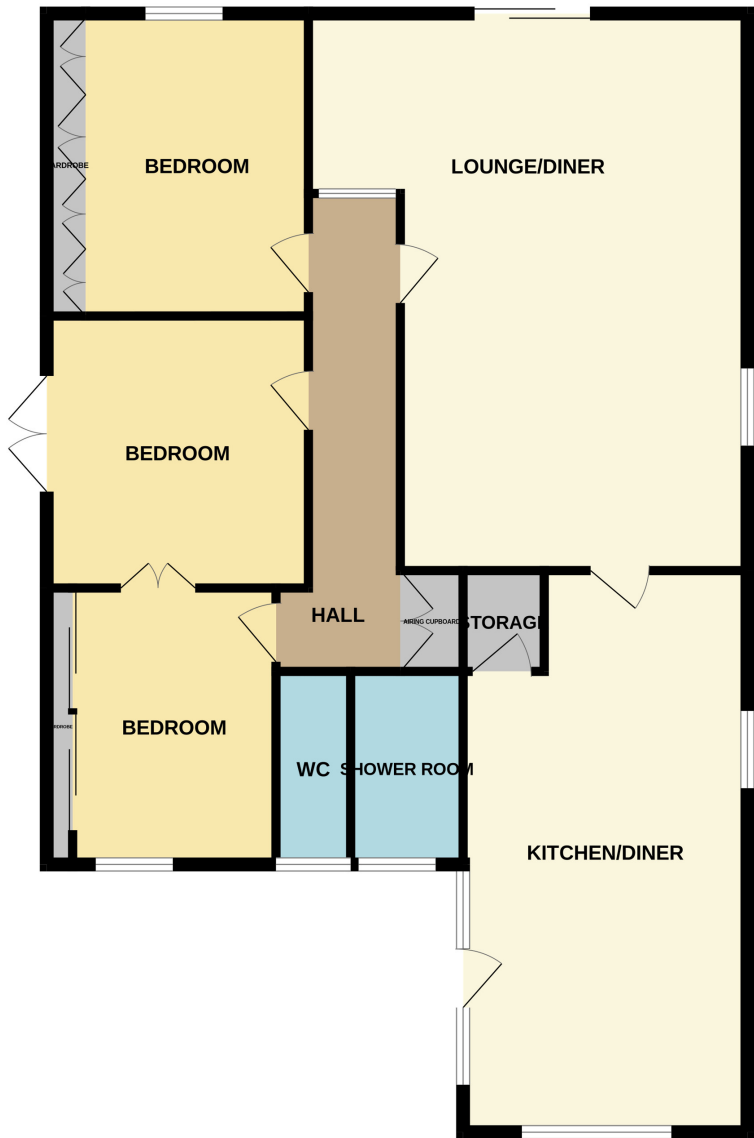








GROUND FLOOR



Whilst every attempt has been made to ensure the accuracy of the floorplan contained here, measurements of doors, windows, rooms and any other items are approximate and no responsibility is taken for any error, omission or mis-statement. This plan is for illustrative purposes only and should be used as such by any prospective purchaser. The services, systems and appliances shown have not been tested and no guarantee as to their operability or efficiency can be given.  
Made with Metropix ©2024

