



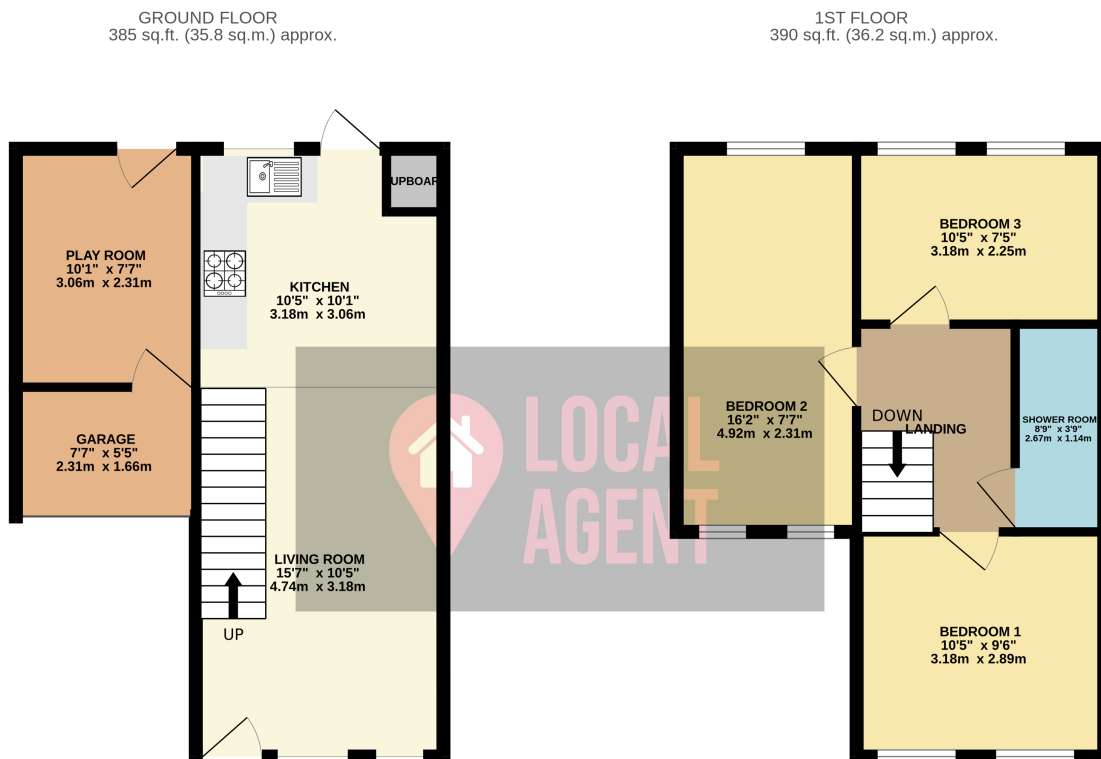
13 Bremner Close, Swanley, Kent, BR8 8TG
£1,900 pcm Freehold



Description

Three Bedroom House available now. Modernised throughout to a high standard. Please email you viewing request to lettings@localagent.properties and you will need to complete a registration process first before viewing.

Located in a quite cul de sac you will find this well presented home. Offering access to local amenities. For schools High Firs Primary (Ofsted rating Good is approx 0.5 miles away). Swanley Park (which covers 60 acres) was previously known as New Barn park. The park benefits from central play areas, café and paddling pool and water play and boating lake. The park is home to Swanley Athletics Club and hosts a number of county cross country races and other events each year. Around one of the large fields is Swanley New Barn Model railway (running on 800 metres of track) operated by a group of volunteers throughout the summer. For Commuters, easy access to the M25, M20 and the A20 being on the M25 Junction 3 interchange. The A2 is also north of the town. Swanley railway station with is a short drive away serves the town with Southeastern and Thameslink services to London Victoria via Bromley South, London Blackfriars.



Whilst every attempt has been made to ensure the accuracy of the floorplan contained here, measurements of doors, windows, rooms and any other items are approximate and no responsibility is taken for any error.