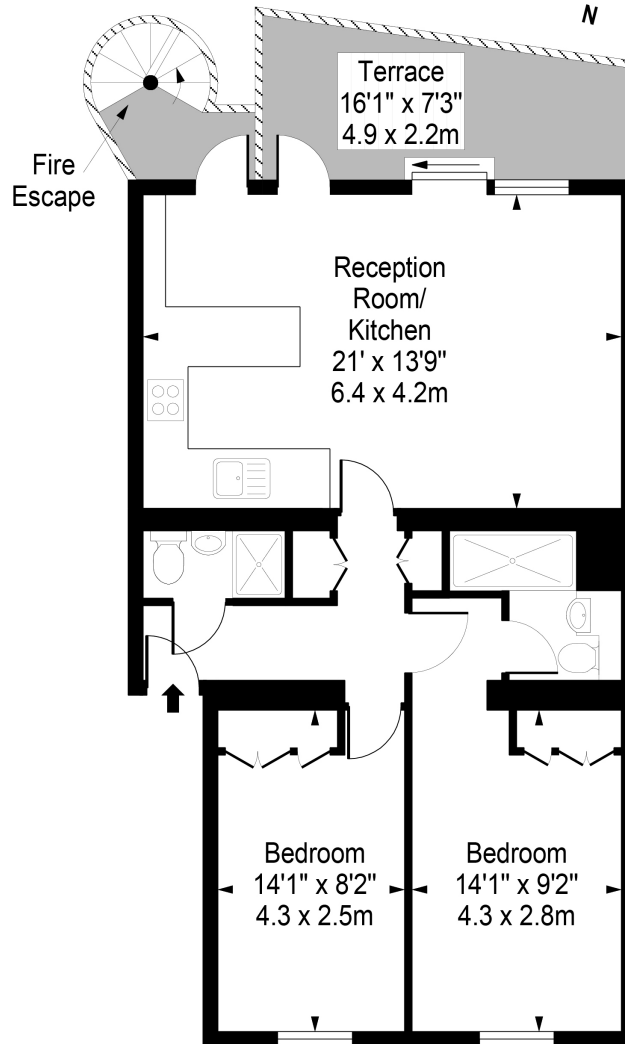


Chatham Road
Between the Commons
SW11

TO LET

A smart, newly-converted first-floor apartment with two double bedrooms, south-facing terrace and bright open-plan living space. It's situated in a very quiet and secluded position close to fashionable Northcote Road, approximately half a mile from transport links at Clapham Junction and in the usual catchment for outstanding Honeywell and Belleville Primary Schools.

Chatham Road,
Battersea, SW11 6HG



First Floor

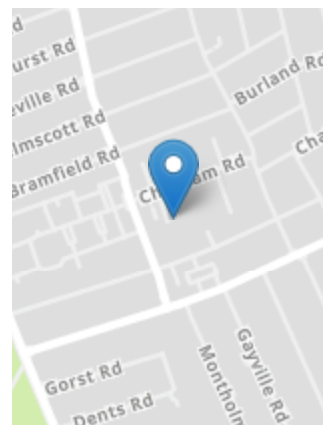
Approx Gross Internal Area **721 Sq Ft - 67.0 Sq M**

For Illustration Purposes Only - Not To Scale
photosandfloorplans.com ©



PROPERTY FEATURES

- 21' Reception/Kitchen
- South-facing Terrace
- En-Suite Shower Room/WC
- 2nd Shower Room/WC
- Available Immediately
- New Conversion
- 721 SQ. FT/ 67 SQ.M
- Utility Cupboard
- First-Floor
- 2 Double Bedrooms



Energy Efficiency Rating		
Very energy efficient - lower running costs		
A		
B		
C		
D		
E		
F		
G		
Not energy efficient - higher running costs		
England, Scotland & Wales	Current	Potential
	82	82

VIEWING BY APPOINTMENT ONLY

The particulars do not constitute part of an offer or contract: the particulars including text descriptions, photographs and plans are only for the guidance of prospective purchasers and must not be relied on as statements of fact: nothing in the particulars shall be deemed as a statement that the property is in good condition nor that any services or facilities are in good working order: measurements given are approximate: prior to viewing we recommend that you discuss particular points of interest with a staff member to avoid a wasted journey