

Maurer Court, John Harrison Way, Greenwich, SE10 0SW

£525,000

Spacious duplex apartment in award-winning Maurer Court in Greenwich Millennium Village, the vision of renowned architect Ralph Erskine. The property boasts over 88 square metres of floor space with a 22ft open plan kitchen/lounge/diner, three bedrooms, family bathroom, downstairs WC, great built in storage cupboards & outside space. Includes 24 hour concierge service, landscaped communal gardens and allocated parking space.

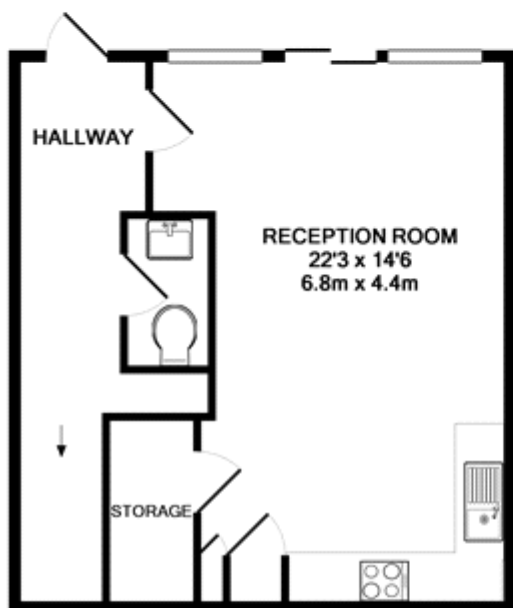
Viewing by appointment with 1st avenue.

Call: 020 8293 8600

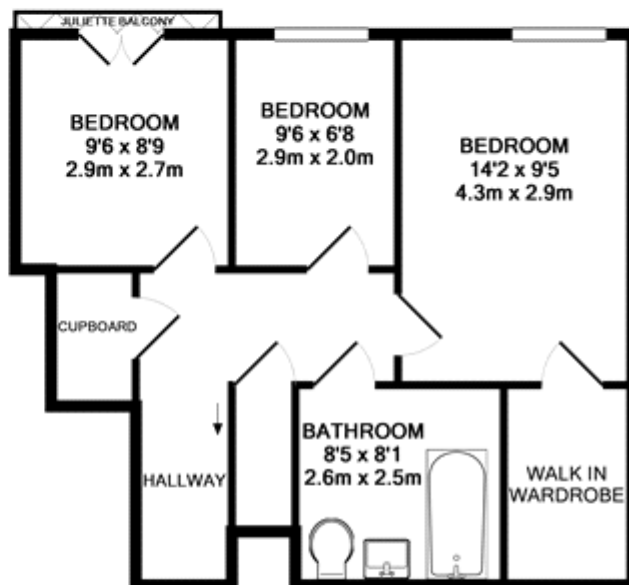
1st avenue, 128 Metcalfe Court, West Parkside, London SE10 0EL
email: info@1stavenue.co.uk

Maurer Court, John Harrison Way, £525,000 Greenwich, SE10 0SW

1stavenue
Real Estate Services



GROUND FLOOR
APPROX. FLOOR
AREA 443 SQ.FT.
(41.2 SQ.M.)



1ST FLOOR
APPROX. FLOOR
AREA 504 SQ.FT.
(46.8 SQ.M.)

TOTAL APPROX. FLOOR AREA 947 SQ.FT. (88.0 SQ.M.)

Whilst every attempt has been made to ensure the accuracy of the floor plan contained here, measurements of doors, windows, rooms and any other items are approximate and no responsibility is taken for any error, omission, or mis-statement. This plan is for illustrative purposes only and should be used as such by any prospective purchaser. The services, systems and appliances shown have not been tested and no guarantee as to their operability or efficiency can be given
Made with Metropix ©2015

Viewing by appointment with 1st avenue.

Call: 020 8293 8600

1st avenue, 128 Metcalfe Court, West Parkside, London SE10 0EL
email: info@1stavenue.co.uk

1stavenue
Real Estate Services