



Flat 14 Avon Court, Cressex Close, Binfield, Berkshire RG42 4DR

£1,250 pcm

Property Summary

A light and spacious second floor flat with two double bedrooms, located at the centre of the village and available immediately unfurnished

Features

- LARGE LIVING ROOM
- TWO DOUBLE BEDROOMS
- KITCHEN
- BATHROOM
- GAS FIRED CENTRAL HEATING
- UPVC WINDOWS
- GARAGE IN BLOCK
- COMMUNAL GARDENS



Room Descriptions

Second Floor

Kitchen

10' 7" x 8' 8" (3.22m x 2.64m) Enter through composite front door into kitchen with range of fitted units. electric hob with oven/grill under, stainless steel one and a half bowl sink with mixer tap, meter cupboard, UPVC window with front aspect, door to living room

Living Room

15' 3" x 13' 11" (4.65m x 4.24m) UPVC window with rear aspect, double panel radiator, TV and telephone points, door to inner lobby

Inner Lobby

With doors to both bedrooms and bathroom

Bedroom One

11' x 10' 11" (3.36m x 3.33m) UPVC window with rear aspect, double panel radiator, fitted double wardrobe and single cupboard with cupboards over

Bedroom Two

10' 11" x 10' 3" (3.33m x 3.13m) UPVC windows with front and side aspect, double panel radiator, fitted double wardrobe and single cupboard with cupboards over

Bathroom

UPVC frosted window with front aspect, white suite comprising bath with shower over, WC with push button flush, wash basin with mixer tap and cupboards under, extractor fan

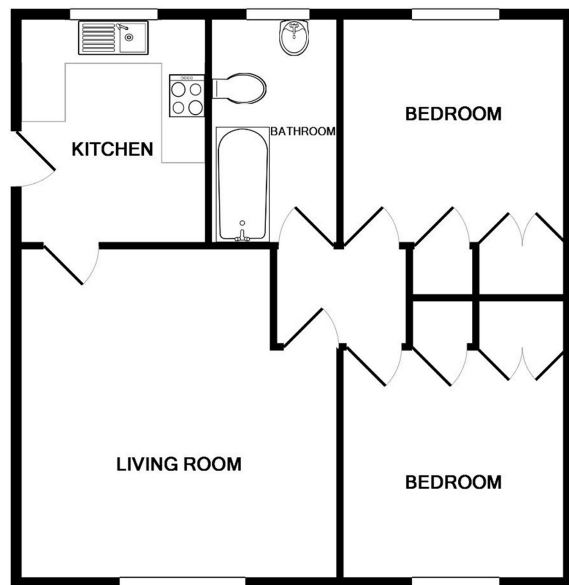
Outside

Communal Garden

There is a large communal garden to the rear of the property

Garage

There is a single garage in a block



Whilst every attempt has been made to ensure the accuracy of the floor plan contained here, measurements of doors, windows, rooms and any other items are approximate and no responsibility is taken for any error, omission, or mis-statement. This plan is for illustrative purposes only and should be used as such by any prospective purchaser. The services, systems and appliances shown have not been tested and no guarantee as to their operability or efficiency can be given.
Made with Metropix ©2018

