

TO LET

£1,500 pcm



11 Hudson Way, Taunton, Somerset, TA2 6UP

£1,500 pcm

- 3 Double Bedrooms
- Family Bathroom/WC and Downstairs WC
- Spacious Kitchen Diner
- Living room with Woodburner
- Fully Double Glazed and Gas Central Heating
- Large Workshop/Home Office with lighting and power
- Unfurnished
- Available Immediately



PROPERTY DESCRIPTION

VIDEO TOUR AVAILABLE, Newton King are delighted to offer to the rental market this spacious & extended 3 bedroom family home situated in a quiet neighbourhood. The property is within close proximity to local shops, schools and amenities.

The accommodation comprises; Porch with access to the boiler cupboard, entrance hall, down stairs WC, open-plan kitchen/diner with pantry and doors opening to the rear garden, a well proportioned light and airy living room with woodburning stove & French doors leading to the patio area. On the first floor you will find three double bedrooms, family bathroom and separate WC.

To the rear of the property you will find is a low maintenance garden complete with garden shed, a fantastic sized a large brick built workshop/multi use office space which is fully double glazed with lighting and power.

The property is available immediately on an unfurnished basis, please contact Newton King for further information between 9am and 6pm.

Council tax band B, EPC rating D.

The property is available to let from early- middle of February, please contact Newton King between the hours of 9am-6pm to arrange a fully accompanied viewing.

Please note:

To secure the property a Holding deposit equal to a weeks rent is payable which is refunded on move in.

Damages deposit is equal to 5 weeks rent.

Should you need to change the Agreement during the Tenancy there is an admin charge of £50.

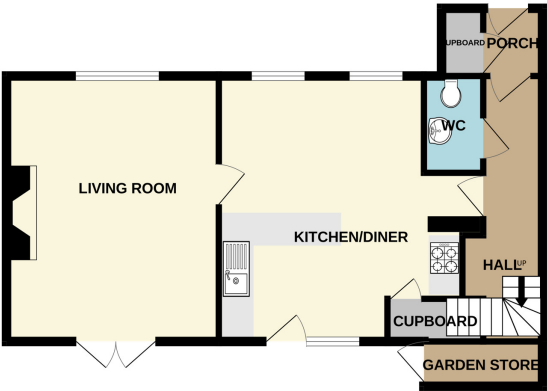
Newton King are members of The Property Ombudsman and Client Money Protect.



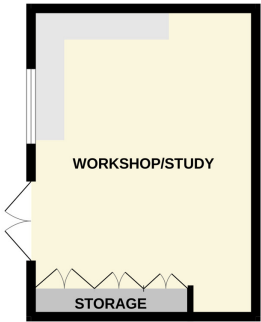
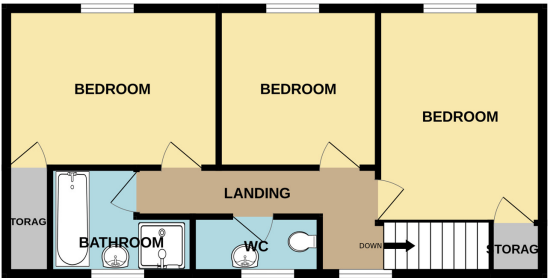


FLOORPLAN & EPC

GROUND FLOOR



1ST FLOOR



Whilst every attempt has been made to ensure the accuracy of the floorplan contained here, measurements of doors, windows, rooms and any other items are approximate and no responsibility is taken for any error, omission or mis-statement. This plan is for illustrative purposes only and should be used as such by any prospective purchaser. The services, systems and appliances shown have not been tested and no guarantee as to their operability or efficiency can be given.
Made with Metropix ©2025

