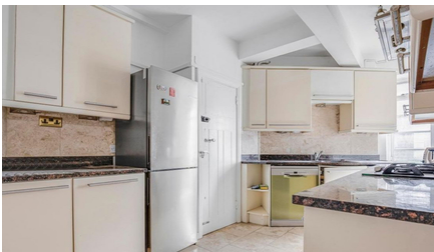




KUBIE GOLD
ASSOCIATES

DORSET HOUSE GLOUCESTER PLACE MARYLEBONE NW1



- TWO BED TWO BATHROOM
- POPULAR PORTERED BLOCK
- FOURTH FLOOR WITH LIFT

- SEPARATE FITTED KITCHEN
- INC HEAT & HOT WATER
- AVAILABLE 24TH JUNE

£975 per week

SALES, LETTINGS & PROPERTY MANAGEMENT

Tel:

020 7563 7272

36 Ivor, Regents Park, London, NW1 6EA

Email: info@kubie-gold.co.uk Website: www.kubie-gold.co.uk

Kubie Gold Associates is the trading name of Kubie Gold Associates Ltd
Company Registration No. 7271501 registered in England and Wales

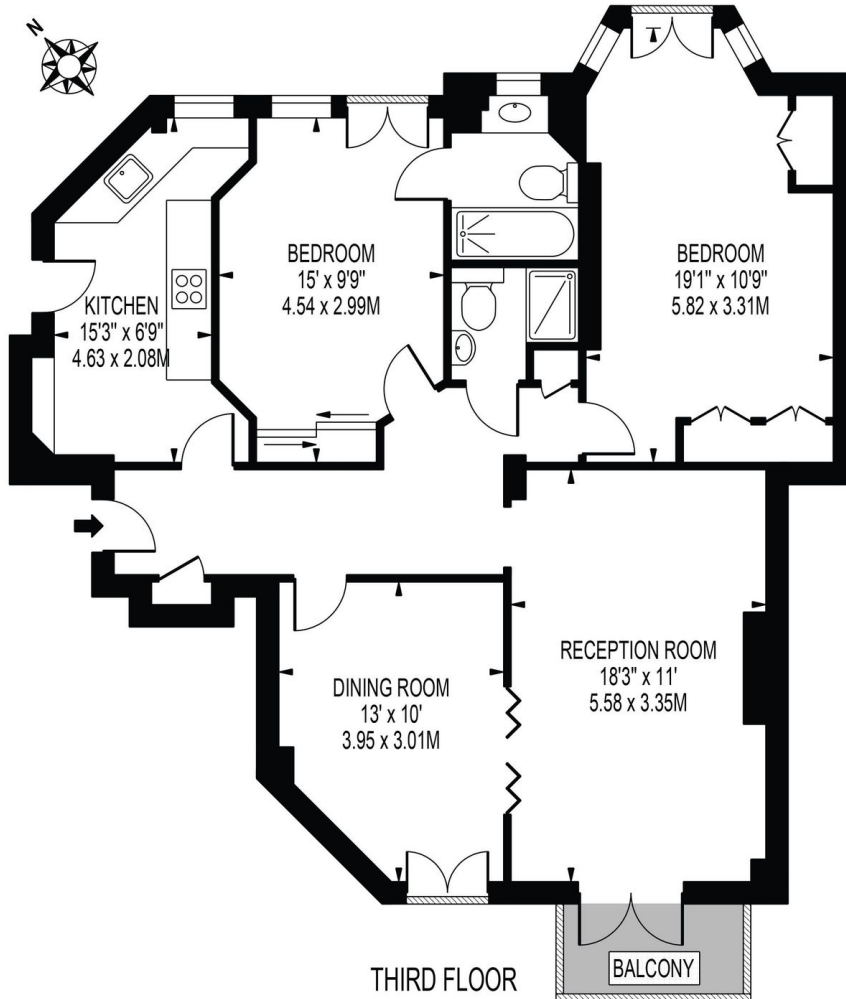


Dorset House Gloucester Place, NW1

Well presented newly decorated two bedroom two bathroom apartment in popular Portered block, double reception with partition doors, Master bedroom with fitted wardrobes giving ample storage and en suite full family bathroom, further double bedroom with fitted wardrobes, separate fully fitted kitchen with all machines D/W W/M, set on the fourth floor with lift, property benefits from wood floors in both receptions, located between both Baker Street and Marylebone Stations, close to all shops, restaurants and the open spaces of Regents Park. Available 24th June.

DORSET HOUSE

APPROXIMATE GROSS INTERNAL FLOOR AREA: 959 SQ FT - 89.05 SQ M



THIRD FLOOR

BALCONY

FOR ILLUSTRATION PURPOSES ONLY

THIS FLOOR PLAN SHOULD BE USED AS A GENERAL OUTLINE FOR GUIDANCE ONLY AND DOES NOT CONSTITUTE IN WHOLE OR IN PART AN OFFER OR CONTRACT. ANY INTENDING PURCHASER OR LESSEE SHOULD SATISFY THEMSELVES BY INSPECTION, SEARCHES, ENQUIRIES AND FULL SURVEY AS TO THE CORRECTNESS OF EACH STATEMENT. ANY AREAS, MEASUREMENTS OR DISTANCES QUOTED ARE APPROXIMATE AND SHOULD NOT BE USED TO VALUE A PROPERTY OR BE THE BASIS OF ANY SALE OR LET.

Local Authority:

Wwestminster

Tax Band:

Band F

Energy Efficiency Rating		Current	Potential
Very energy efficient - lower running costs			
(92-100)	A		
(81-91)	B		
(69-80)	C	75	84
(55-68)	D		
(39-54)	E		
(21-38)	F		
(1-20)	G		
Not energy efficient - higher running costs			
England, Scotland & Wales		EU Directive 2002/91/EC	

