



10 Rivenmill Close

Widnes, WA8 3FJ



0151 424 5100  
[info@mylerestates.com](mailto:info@mylerestates.com)





# Rivenmill Close

Widnes, WA8 3FJ

OFFERS OVER £335,000

This immaculate detached house for sale combines modern elegance with functional living spaces, featuring two spacious reception rooms, a well-equipped kitchen, four bedrooms including a master suite with en-suite, ample parking, a single garage, and is in pristine condition, making it perfect for families offered with NO CHAIN.



MYLER&Co



MYLER&Co





## Ground Floor

### Dining Room

2.70m x 3.85m (8' 10" x 12' 8")

### Downstairs WC

### Kitchen

3.15m x 4.30m (10' 4" x 14' 1")

### Lounge

3.50m x 4.30m (11' 6" x 14' 1")

## FIRST FLOOR

### Bedroom One

2.70m x 3.60m (8' 10" x 11' 10")

### En-Suite

### Bedroom Two

2.70m x 3.40m (8' 10" x 11' 2")

### Family Bathroom

### Bedroom Three

2.50m x 3.40m (8' 2" x 11' 2")

### Bedroom Four

2.45m x 3.45m (8' 0" x 11' 4")

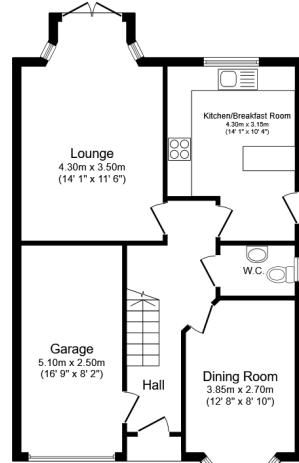
### Externals

### Rear Garden

### Driveway

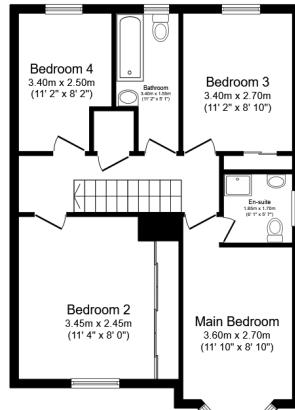


10 Rivenmill Close, Widnes, WA8 3FJ



Ground Floor

Floor area 66.9 m<sup>2</sup> (720 sq.ft.)



First Floor

Floor area 62.8 m<sup>2</sup> (676 sq.ft.)

TOTAL: 129.6 m<sup>2</sup> (1,395 sq.ft.)

This floor plan is for illustrative purposes only. It is not drawn to scale. Any measurements, floor areas (including any total floor area), openings and orientations are approximate. No details are guaranteed, they cannot be relied upon for any purpose and do not form any part of any agreement. No liability is taken for any error, omission or misstatement. A party must rely upon its own inspection(s). Powered by [www.Propertybox.io](http://www.Propertybox.io)



Myler & Co

77, Albert Road, Widnes, Cheshire, WA8 6JS

0151 424 5100

[info@mylerestates.com](mailto:info@mylerestates.com)