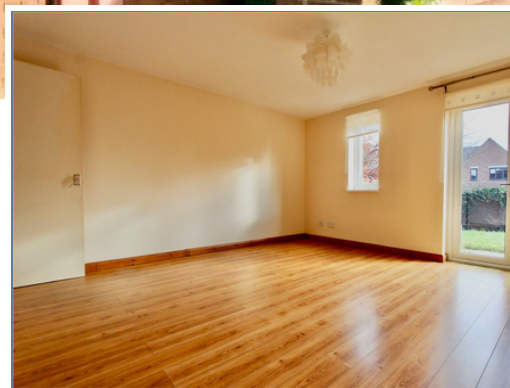




6 Coriander Court, Walnut Tree, Milton Keynes, Buckinghamshire, MK7 7BJ

£275,000 Freehold

- 2 Bedrooms
- Large Garden
- Modern Kitchen
- CUL-DE-SAC
- Local Shops
- Available now
- EPC Rating





This is a LOVELY 2 bedroom semi detached located in a cul-de-sac in Walnut Tree. Good condition throughout, a recently fitted kitchen and a long rear garden are the standout features. Excellent proximity to the Open University and local parklands which offer peace and serenity .

As you enter you are welcomed to a generous entrance hallway offering access to the kitchen and lounge. French doors from the lounge lead to a large rear garden

Upstairs there are 2 bedrooms, a bathroom and a large walk-in wardrobe leading off the master bedroom

Available now, call to arrange your viewing.

Disclaimer

Whilst we have endeavoured to prepare our sales particulars accurately none of the services, appliances or equipment have been tested. A buyer should satisfy themselves on such matters prior to purchase. Any measurements or distances mentioned in these particulars are for guide reference only. If such particulars are fundamental to a purchase, buyers should rely on their own enquiries. All enquiries should be directed to Elevation Estate Agents in the first instance.



Floor plans are for layout purposes only
Plan produced using PlanUp.