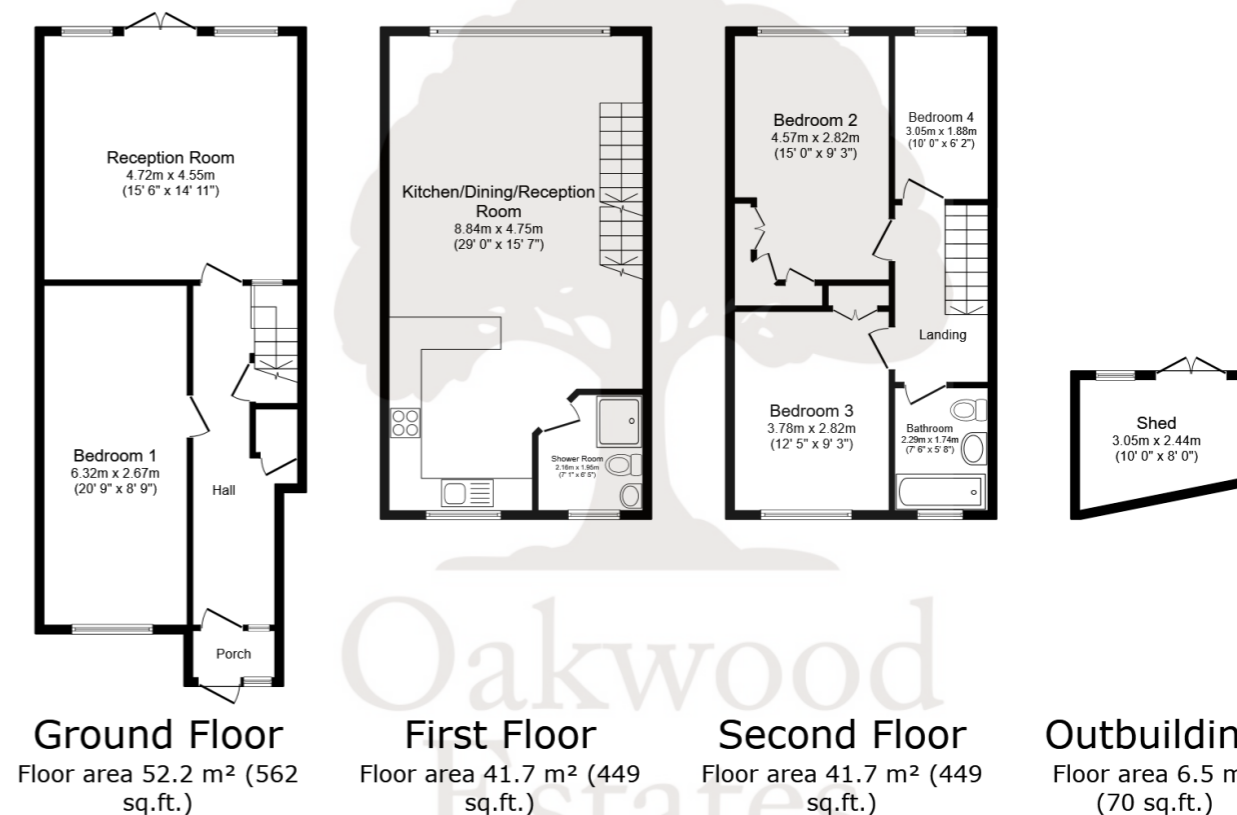


This well presented four bedroom town house is located in the heart of West Windsor close to local amenities and schools. To the ground floor, a double bedroom and spacious 15ft reception room with patio doors on to the garden. The first floor features an open plan kitchen/diner/living room which measures 29ft in total and a shower room. To the second floor, two double bedrooms and a single bedroom along with the family bathroom. To the rear there is a enclosed and landscaped garden with decking area and a large shed for storage, whilst to the front there is driveway parking for two cars along with an electric car charger.

-  **FOUR BEDROOM TOWNHOUSE**
-  **OPEN PLAN LIVING ROOM/KITCHEN/DINING**
-  **ENCLOSED GARDEN**
-  **COUNCIL TAX E**
-  **TWO BATHROOMS**
-  **DRIVEWAY PARKING**
-  **EPC C**

					
x4	x2	x2	x2	Y	N
Bedrooms	Reception Rooms	Bathrooms	Parking Spaces	Garden	Garage



TOTAL: 142.1 m² (1,530 sq.ft.)

This floor plan is for illustrative purposes only. It is not drawn to scale. Any measurements, floor areas (including any total floor area), openings and orientations are approximate. No details are guaranteed, they cannot be relied upon for any purpose and do not form any part of any agreement. No liability is taken for any error, omission or misstatement. A party must rely upon its own inspection(s). Powered by www.Propertybox.io

Prospective purchasers should be aware that these sales particulars are intended as a general guide only and room sizes should not be relied upon for carpets or furnishing. We have not carried out any form of survey nor have we tested any appliance or services, mechanical or electrical. All maps are supplied by Goview.co.uk from Ordnance Survey mapping. Care has been taken in the preparation of these sales particulars, which are thought to be materially correct, although their accuracy is not guaranteed and they do not form part of any contract.



Location

Great local schools a short walk. For commuters, Maidenhead (Elizabeth line) & Windsor train stations are near by, plus good access to M4. Local shops and restaurants just a short stroll.

Schools

NEAREST SCHOOLS

- Homer First School and Nursery
State School
Ofsted: Good
0.1 miles
Alexander First School
State School
Ofsted: Good
0.5 miles
Dedworth Green First School

State School

- Ofsted: Good
0.4 miles
Dedworth Middle School
State School
Ofsted: Good
0.4 miles

Transport

NEAREST STATIONS

- Windsor & Eton Central Station
1.9 miles
Windsor & Eton Riverside Station
2.1 miles
Burnham Station
2.9 miles

Council Tax

Band E

