



11 Buckhurst Road , Bexhill on Sea , Bexhill on Sea , East Sussex , TN40 1UE
£249,950



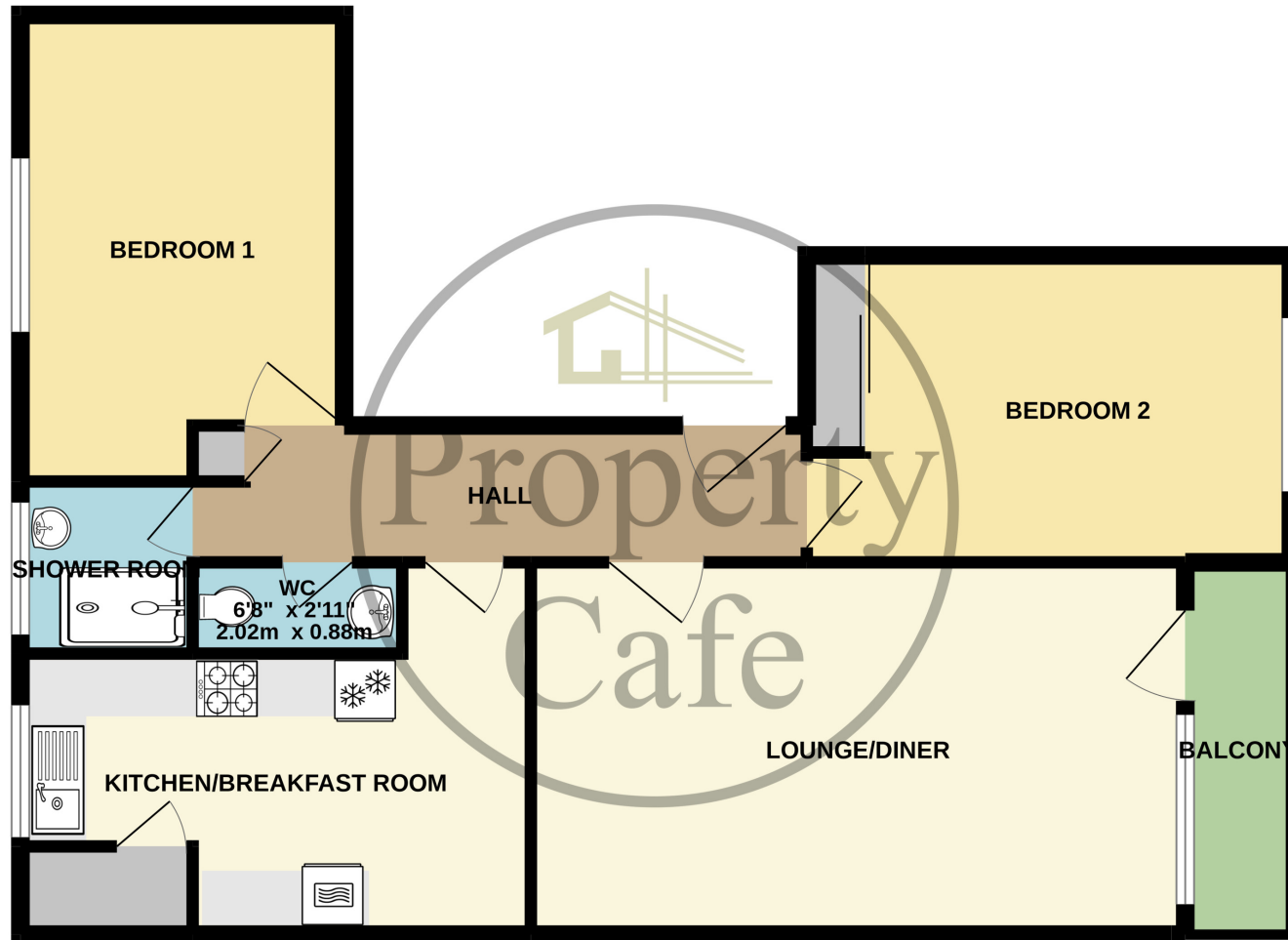


JUST ON MARKET : The Property Cafe is delighted to offer For Sale this Spacious First Floor Two Bedroom Purpose Built Apartment with benefits & accommodation to include: A Spacious First Floor Apartment * Sought After Town Center Location * Two Good Size Double Bedrooms * South Facing Lounge-Diner * Covered South Facing Balcony * Modern Shower Room & Separate W.C * Modern Kitchen-Diner * Central Heating & Double Glazed * Located Close To The Station, Seafront & Town Center Shopping * Well Presented & Modern Throughout * Secure Communal Entrance Hall with Entry Phone * A Single Garage To The Rear (En-Bloc) * Internal Viewing Highly Recommended * Call our Bexhill Team 01424 224488

As advised : The apartment is situated within easy walking distance of Bexhill Town Center which offers an excellent range of independent shops and amenities serving the local residents. Within the Town Center you will find all the shops general facilities that you may need on a daily basis, most are independently owned and have been in existence for many years but of course there are also some excellent main shopping facilities. You will find an excellent Doctors surgery, various dentist, excellent local pubs and restaurants, a main pharmacy & main post office. There is a regular bus services close by with services to Eastbourne and Hastings and both Collington & Bexhill Mainline stations are also close by providing excellent direct services routes to Gatwick, Ashford International & Central London.



FIRST FLOOR APARTMENT
823 sq.ft. (76.5 sq.m.) approx.



TOTAL FLOOR AREA : 823 sq.ft. (76.5 sq.m.) approx.

Whilst every attempt has been made to ensure the accuracy of the floorplan contained here, measurements of doors, windows, rooms and any other items are approximate and no responsibility is taken for any error, omission or mis-statement. This plan is for illustrative purposes only and should be used as such by any prospective purchaser. The services, systems and appliances shown have not been tested and no guarantee as to their operability or efficiency can be given.

Made with Metropix ©2022





JUST ON MARKET : The Property Cafe is delighted to offer For Sale this Spacious First Floor Floor Two Bedroom Purpose Built Apartment with benefits & accommodation to include: A Spacious First Floor Apartment * Sought After Town Center Location * Two Good Size Double Bedrooms * South Facing Lounge-Diner * Covered South Facing Balcony * Modern Shower Room & Separate W.C * Modern Kitchen-Diner * Central Heating & Double Glazed * Located Close To The Station, Seafront & Town Center Shopping * Well Presented & Modern Throughout * Secure Communal Entrance Hall with Entry Phone * A Single Garage To The Rear (En-Bloc) * Internal Viewing Highly Recommended * Call our Bexhill Team 01424 224488





Tenure: Leasehold & Share Of Freehold * Approximate Service Charge £150 Per Month (All Inclusive) Ground Rent: N/A

At Property Café we believe it important to give clear and straight forward advice to both buyers and sellers alike. Whilst we believe the internet is truly amazing we also believe there is still no substitute for meeting you in person; with this in mind we have developed a unique lounge style environment that allows you the time and space to discuss your requirements with us in detail and enjoy your property search in comfort. Our trained consultants look forward to meeting you.

- Spacious First Floor Apartment
- Two Double Bedrooms with Storage
- South Facing Lounge With Balcony
 - Modern Fitted Kitchen-Diner
 - Shower Room with Sep W.C
 - Single Garage En-Bloc

- Close To Town Center & Station
- Secure Communal Entrance & Lift
- Well Managed Building (Low Outgoings)
 - Long Lease & Share Of Freehold
 - Ideal & Convenient Location
 - Sold With No Onward Chain!