

39 Birkdale Drive

Folkestone
CT19 5LP

£400,000 FREEHOLD

DRAFT DETAILS... FOR SALE WITH BURNAP + ABEL... Burnap + Abel are delighted to offer this stunning three bedroom semi detached bungalow situated in the sought after location of Birkdale Drive in Folkestone. The property is in our opinion in superb decorative order and benefits from two extensions carried out by previous owners. The spacious accommodation comprises lounge/dining room with extended sun room, kitchen, W.C, shower room and three double bedrooms. Additional benefits include a garage, off road parking for multiple vehicles along with secluded front and rear gardens. For your chance to view call sole agent Burnap + Abel now on 01303 258590.



Lounge/Dining Room

21' 8" x 12' 3" (6.60m x 3.73m)

Sun Room

8' 10" x 8' 4" (2.69m x 2.54m)

Kitchen

13' 3" x 6' 10" (4.04m x 2.08m)

W.C

Shower Room

8' 7" x 5' 5" (2.62m x 1.65m)

Bedroom One

14' 1" x 12' 2" (4.29m x 3.71m)

Bedroom Two

14' 4" x 13' 4" (4.37m x 4.06m)

Bedroom Three

12' 6" x 9' 11" (3.81m x 3.02m)

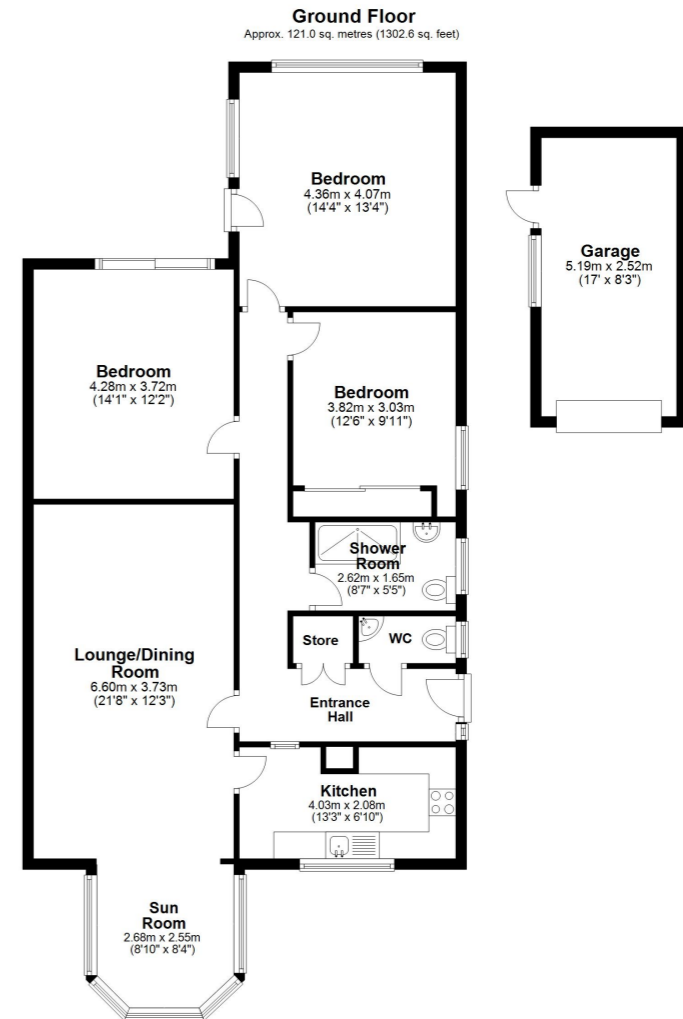
Garage

17' 0" x 8' 3" (5.18m x 2.51m)

Off Road Parking

Rear Garden

Front Garden



Whilst every attempt has been made to ensure the accuracy of the floor plan contained here, measurements of doors, windows, rooms and any other items are approximate and no responsibility is taken for any error, omission or mis-statement. This plan is for illustrative purposes only and should be used as such by any prospective purchaser. Plan produced using PlanUp.

