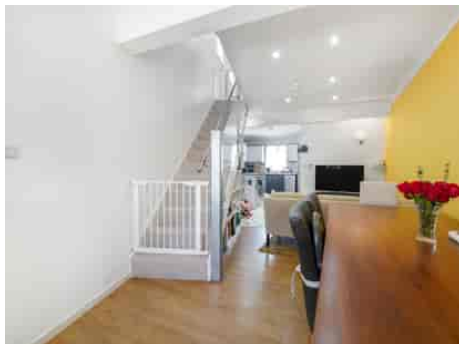
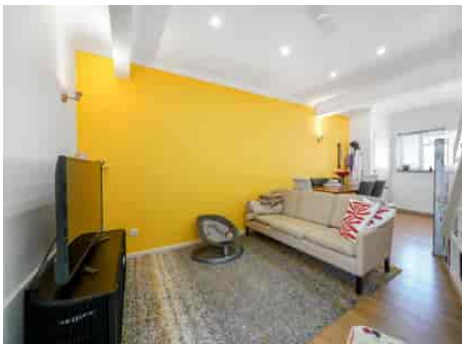


# Truuli



**Ecclesbourne Road, Thornton Heath, Surrey, CR7 7BQ**

**£350,000 Freehold**

- Gated development
- Semi detached modern home
- Generous shared front garden
- No onward chain
- Upstairs bathroom plus ground floor W/C
- Open planned living/dining area

Southbridge Place, Croydon, Surrey, CR0 4HA

Tel: 0330 043 0002

Email: [save@truuli.co.uk](mailto:save@truuli.co.uk) Web: [www.truuli.co.uk](http://www.truuli.co.uk)

# Ecclesbourne Road, Thornton Heath, Surrey, CR7 7BQ

£350,000 Freehold

Set within a private, gated modern development on a picturesque tree-lined road in the heart of Thornton Heath, this exceptional freehold property offers contemporary living in a peaceful and secure setting.

Ecclesbourne Road



Approximate Gross Internal Area = 65.25 sq m / 702 sq ft

The Floor plan is not to scale and measurements and areas shown are approximate and therefore should be used for illustrative purposes only. The plan has been prepared in accordance with the RICS code of Measuring Practice and whilst we have confidence in the information produced it must not be relied on. Maximum lengths and widths are represented on the floor plan. If there is any aspect of particular importance, you should carry out or commission your own inspection of the property.  
Copyright © BleuPlan

