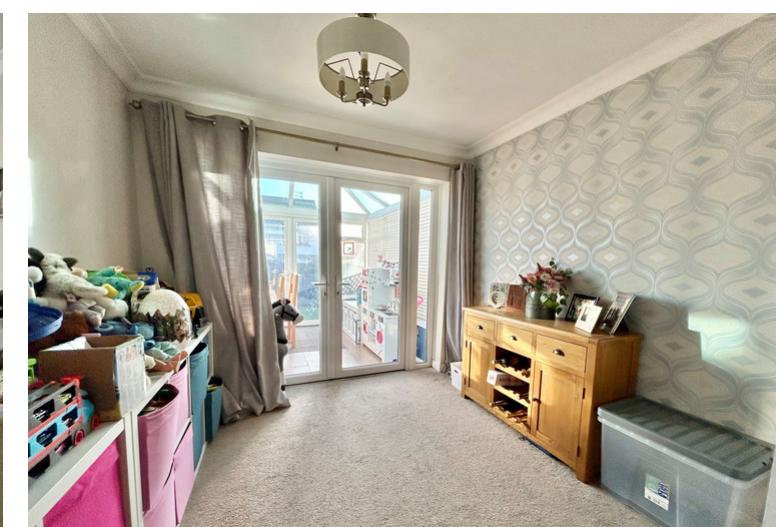




Day & Co  
ESTATE AGENTS

28 Cavendish Street  
Keighley  
BD21 3RG



39 Birchlands Avenue, Wilsden,  
Bradford, West Yorkshire, BD15  
0HB

£265,000

T: 01535 664609

W: [www.dayandcoestateagents.co.uk](http://www.dayandcoestateagents.co.uk)

E: [keighley@dayandcoestateagents.co.uk](mailto:keighley@dayandcoestateagents.co.uk)



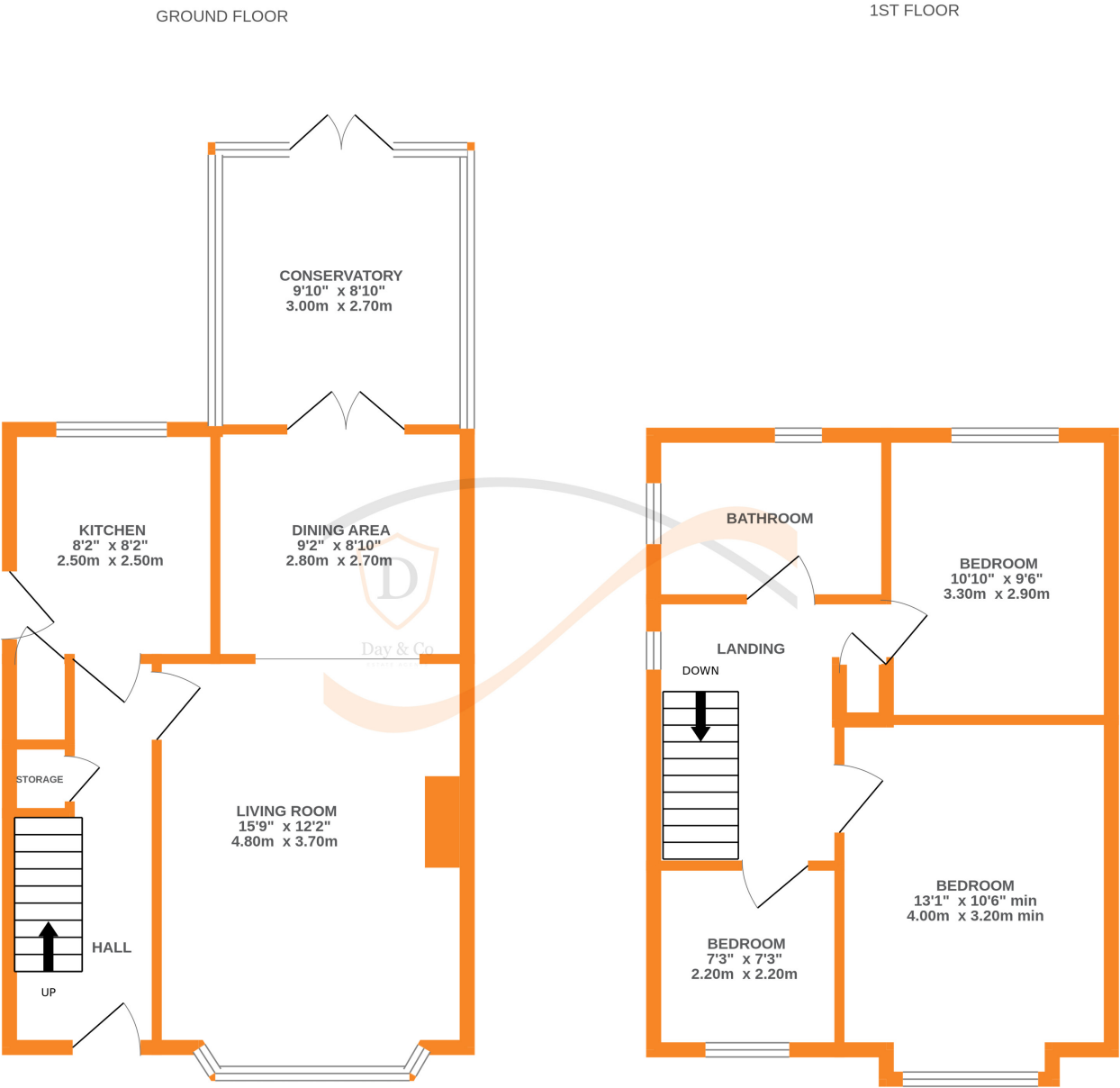
- Awaiting EPC
  - Three Bedrooms
  - Front & Rear gardens/Drive & Garage
- Well Presented Semi-Detached Family Home
  - Two Reception Rooms & Conservatory
  - Popular Village Location Of Wilsden/Excellent Access To Local Schools

SUMMARY

**\*\*A WELL PRESENTED 3 BEDROOM SEMI-DETACHED FAMILY HOME, EVER POPULAR VILLAGE LOCATION OF WILSDEN WITH EXCELLENT ACCESS TO LOCAL SCHOOLS!\*\*** Having 2 reception rooms, a conservatory, bathroom with 4 piece suite, front & rear gardens, drive, garage - **EARLY VIEWING RECOMMENDED TO AVOID DISAPPOINTMENT!!** Awaiting EPC.

FULL DESCRIPTION

An ideal purchase for the growing family is this well presented three bedroom semi-detached family home situated in the ever popular village location of Wilsden with excellent access to local schools and village amenities. The well proportioned accommodation comprises of an entrance hall, the lounge has a living flame gas fire in surround, radiator, double glazed window to the front and opens out into the dining room which in turn has double glazed patio doors leading to the conservatory. The kitchen has a range of base and wall mounted units, integrated double oven, hob, fridge, freezer, slimline dishwasher, washing machine, double glazed window to the rear and door to the side. To the first floor there are three bedrooms, the house bathroom is also on this level having a four piece suite comprising of a bath, shower cubicle, wash hand basin, WC, double glazed windows to rear and side aspect. Externally there are gardens to the front and rear, a driveway to the side leads to a garage. Viewing essential to fully appreciate, awaiting EPC.



Whilst every attempt has been made to ensure the accuracy of the floorplan contained here, measurements of doors, windows, rooms and any other items are approximate and no responsibility is taken for any error, omission or mis-statement. This plan is for illustrative purposes only and should be used as such by any prospective purchaser. The services, systems and appliances shown have not been tested and no guarantee as to their operability or efficiency can be given.  
Made with Metropix 62026