

Harper Studios, , Woolwich, SE18 6GW

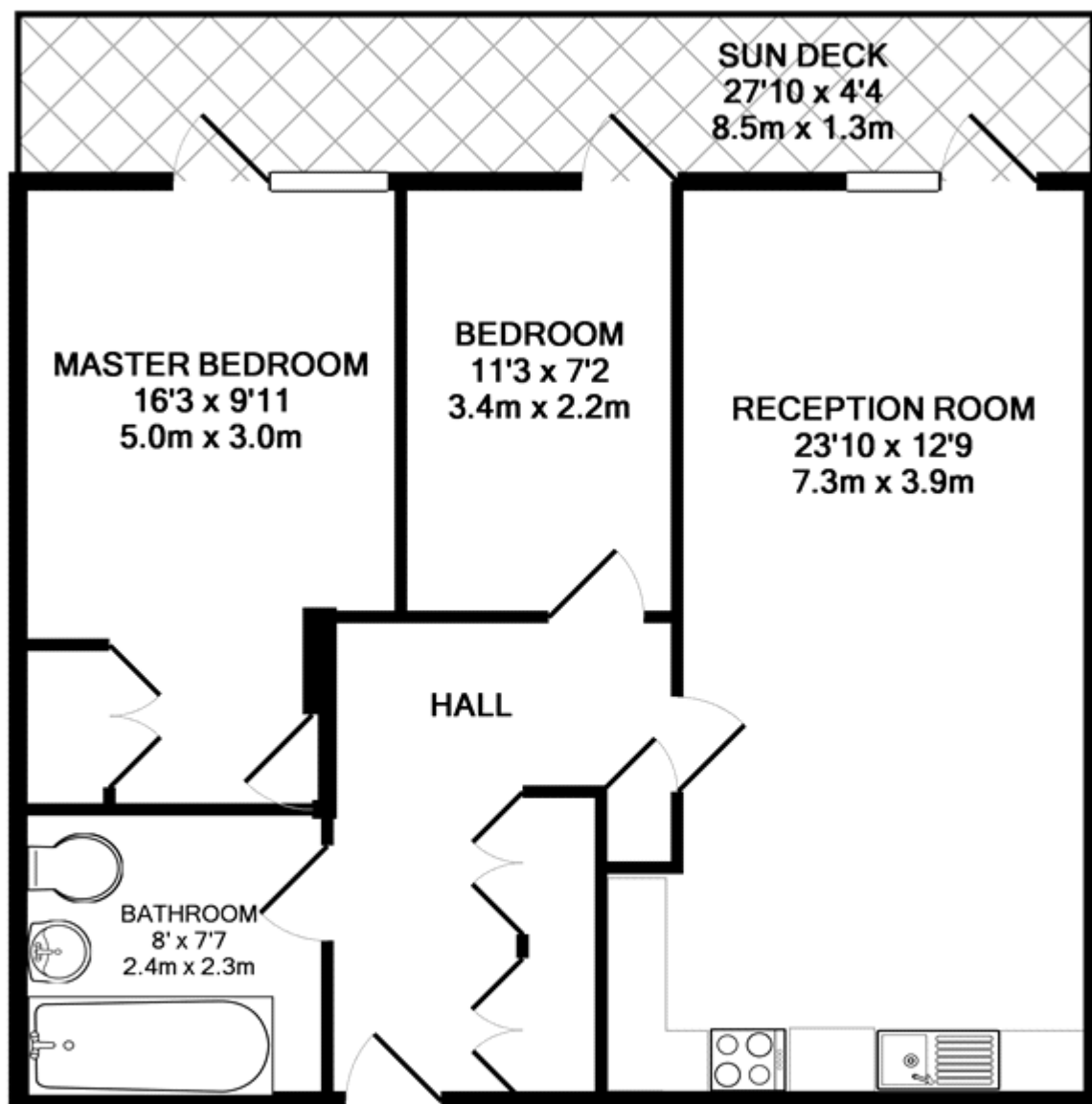
£1,300 PCM

A stunning 8th floor apartment situated in the newly built Woolwich Central development. This apartment is located just moment away from the DLR and mainline train services, as well as shops, bars and restaurants. Offered furnished.

Viewing by appointment with 1st avenue.

Call: 020 8293 8600

1st avenue, 128 Metcalfe Court, West Parkside, London SE10 0EL
email: info@1stavenue.co.uk



TOTAL APPROX. FLOOR AREA 661 SQ.FT. (61.4 SQ.M.)

Whilst every attempt has been made to ensure the accuracy of the floor plan contained here, measurements of doors, windows, rooms and any other items are approximate and no responsibility is taken for any error, omission, or mis-statement. This plan is for illustrative purposes only and should be used as such by any prospective purchaser. The services, systems and appliances shown have not been tested and no guarantee as to their operability or efficiency can be given

Made with Metropix ©2015

Viewing by appointment with 1st avenue.

Call: 020 8293 8600

1st avenue, 128 Metcalfe Court, West Parkside, London SE10 0EL
email: info@1stavenue.co.uk

