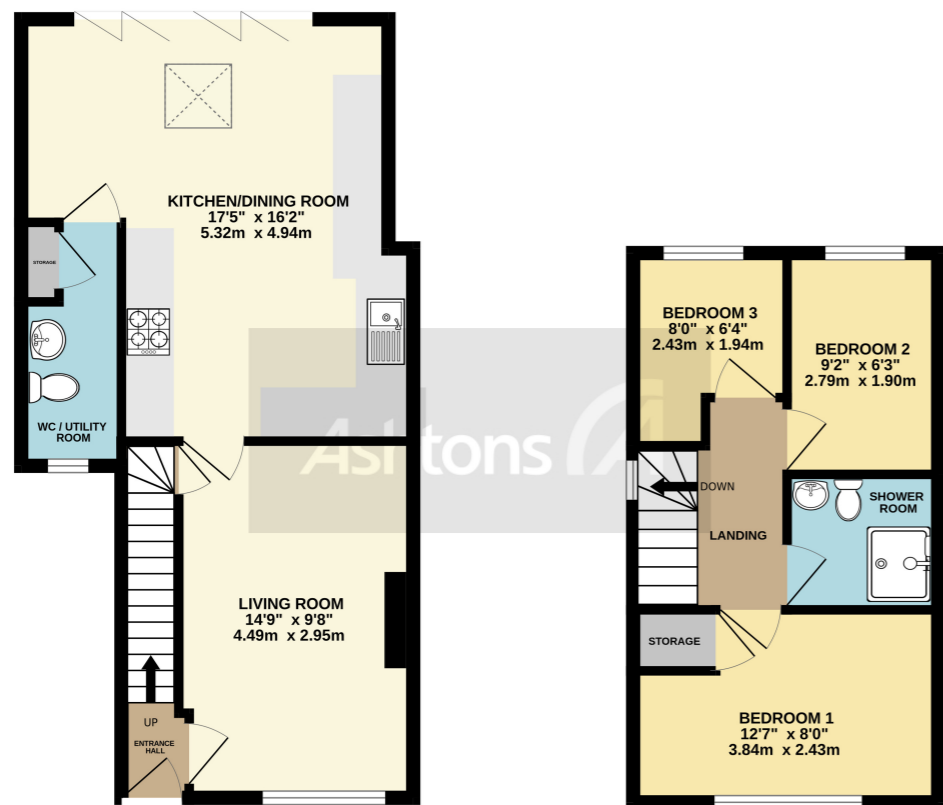


GROUND FLOOR
451 sq.ft. (41.9 sq.m.) approx.

1ST FLOOR
286 sq.ft. (26.6 sq.m.) approx.



TOTAL FLOOR AREA: 737 sq.ft. (68.5 sq.m.) approx.

Whilst every attempt has been made to ensure the accuracy of the floorplan contained here, measurements of doors, windows, rooms and any other items are approximate and no responsibility is taken for any error, omission or mis-statement. This plan is for illustrative purposes only and should be used as such by any prospective purchaser. The services, systems and appliances shown have not been tested and no guarantee as to their operability or efficiency can be given. Made with Metropro ©2023



12 Keats Close, Widnes, Cheshire. WA8 7EX. Offers Over £220,000

Under floor heating | Utility room & Downstairs W/c | Extended open plan Kitchen | Tri-fold doors |



Contact your local office
to arrange a viewing:

Padgate: 01925 479334
Great Sankey: 01925 454300
Winwick: 01925 232146
Stockton Heath: 01925 453400
St.Helens: 01744 754120
Wigan: 01942 498862
Culcheth: 01925 764744
Ashton-In-Makerfield: 01942 364446
Newton-Le-Willows: 01925 907770
Commercial Office: 01925 907709
Lettings Head Office: 01925 873533
Financial Services: 01925 221234

Viewing Arrangements

Viewing is strictly by appointment only through
Ashtons Estate Agency.

Disclaimer Property Details

These particulars, whilst being believed to be accurate are set out as a general outline only for guidance and do not constitute any part of an offer or contract. Intending purchasers should not rely on them as statements of representation of fact, but must satisfy themselves by inspection or otherwise as to their accuracy. We have not carried out a detailed survey nor tested the services, appliances and specific furnishings. The measurements given are approximate. No person in this firm's employment has the authority to make or give any representation or warranty in respect of the property.

All details, photographs and floorplans are the
copyright of Ashtons Estate Agency.



How much you can borrow?
Speak to a mortgage expert in your local office.

Ashtons Financial Services

Ashtons

Ashtons.net rightmove

PrimeLocation.com Zoopla.co.uk





The heart of this home lies within its impeccable kitchen, expertly designed for both functionality and beauty. The modern fittings and impressive craftsmanship create a culinary haven that will delight any aspiring chef. Equipped with top-of-the-line appliances and abundant storage, the kitchen becomes the perfect gathering spot for family and friends.

Did you know?

Ashtons Estate Agency now have a network of Independent, whole of Market Mortgage Advisors working in our offices. Speak to an expert today, contact your local office.

Stay cozy year-round with the indulgent underfloor heating system, providing warmth and comfort whilst natural light floods the interior, thanks to the charming Velux sky light that graces the ceilings of this exceptional open plan kitchen diner. Invite in the beauty of the great outdoors with the impressive tri-fold's that seamlessly connect the interior living space to the captivating garden. Whether you are hosting a summer gathering or simply enjoying a peaceful moment alone, these doors create a

