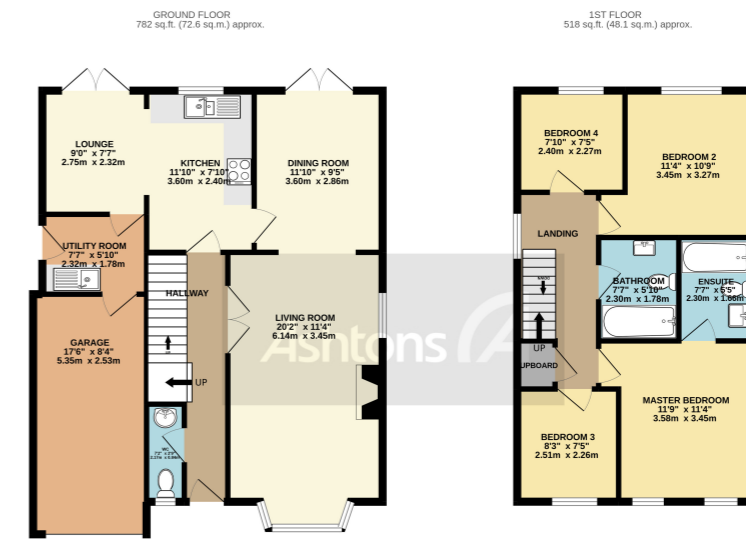


The Copse, Newton-le-Willows, WA12 £350,000



TOTAL FLOOR AREA: 1300 sq.ft. (120.7 sq.m.) approx.
 Whilst every attempt has been made to ensure the accuracy of the floorplan contained here, measurements of rooms, wall-to-wall, are for approximate use only and should not be used as such by any prospective purchaser. The services, systems and appliances shown have not been tested and no guarantee as to their operation or efficiency can be given.
 Made with Metropac (2022)



Enviably located on a highly prized modern development & tucked away right in the corner of the cul-de-sac itself - this generously sized double storey extended detached family home totals an astonishing 1300 square feet (approx) of living space & rests in one of the best spots on the whole estate.

x 4 x 2

See more of this house at [ashtons.net](https://www.ashtons.net)

