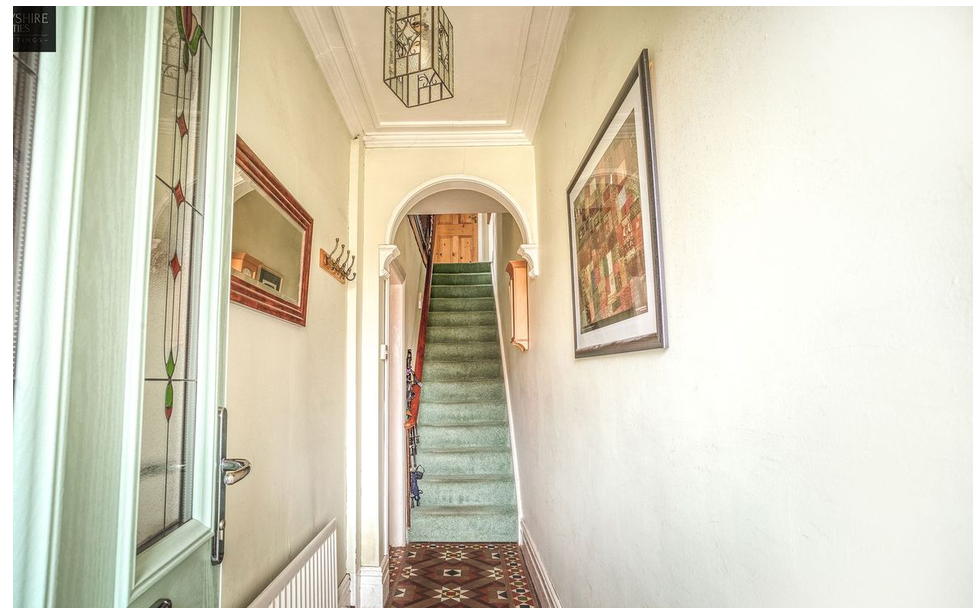






Chapel Street, Kilburn, Kilburn, Derbyshire DE56 0NT
£250,000 - Freehold



PROPERTY DESCRIPTION

Derbyshire Properties are pleased to present this spacious period semi detached house located in residential area. The property benefits from a number of original features throughout that create a charming environment and the substantial rear garden is ideal for children. The property briefly comprises of entrance hallway, lounge, dining room and kitchen. To the first floor there is a landing, three bedrooms and sizable family bathroom. Externally the property offers a low maintenance elevated frontage and large rear garden offering high degrees of privacy.

POINTS OF INTEREST

- Period Semi Detached Property
- 3 Bedrooms
- Beautiful Modern Bathroom
- Large Landscaped Rear Garden
- Through Lounge/Diner
- Charm & Character Throughout
- Village Location
- Ideal Family Home
- View Essential
- COUNCIL TAX BAND B

