

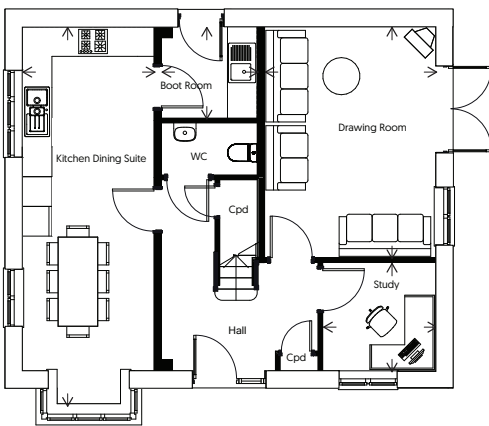
PLOT 51

Burford

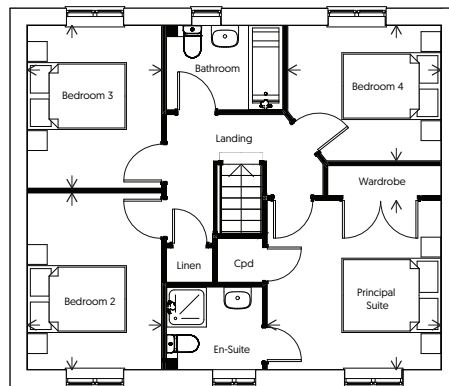
DELUXE



DIMENSIONS



GROUND FLOOR



FIRST FLOOR

Drawing Room	11' 4" x 15' 4"	3.5m x 4.7m
Kitchen, Family & Dining Suite	8' 9" x 25' 1"	2.7m x 7.7m
Boot Room	6' 4" x 6' 1"	1.9m x 1.9m
Study	7' 6" x 7' 2"	2.3m x 2.2m
Principal Suite	11' 6" x 11' 2"	3.5m x 3.4m
Bedroom 2	8' 11" x 11' 8"	2.7m x 3.6m
Bedroom 3	8' 11" x 10' 9"	2.7m x 3.3m
Bedroom 4	10' 2" x 9' 0"	3.1m x 2.7m

29.09.2023



The information and images we provide are issued in good faith and designed to give a flavour of our development and house types. This may not reflect a specific plot and does not form part of any contract. Details such as final finishes, landscaping, PV panel locations, handing and windows will vary. Layouts including bathroom and kitchen layouts are indicative only and designs may change due to our process of continuous product development. Some house types include areas of reduced headroom. All dimensions are approximate only. Images used in marketing materials may be computer generated or photography of previous developments. Stone and Render colours can vary when viewing on screen/in print. Some areas may be subject to minor Planning changes. Our sales consultant will be delighted to discuss plot specific details prior to any formal reservation.



Call 07917 376854 or Visit www.cotswoldhomes.co.uk