



8 Wheatsheaf Court, Magor, Caldicot. NP26
3LD
£280,000
Tenure Leasehold

- GUIDE PRICE £280,000 - £290,000
- WELL PRESENTED END TERRACE HOUSE
- WALKING DISTANCE TO MAGOR SQUARE
- 3 BEDROOMS
- LOUNGE OPENING TO DINING ROOM
- MODERN FIRST FLOOR BATHROOM
- LARGE EASILY MAINTAINED REAR GARDEN
- PERFECT FOR FIRST TIME BUYERS OR RETIREMENT
- NO CHAIN

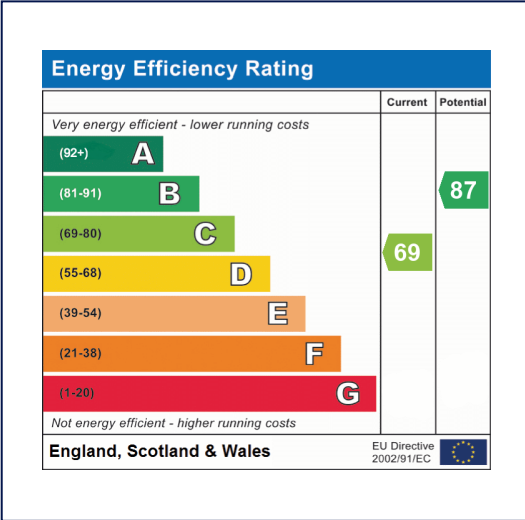
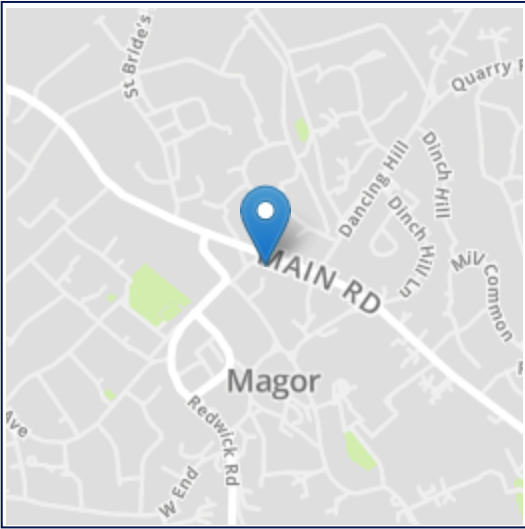
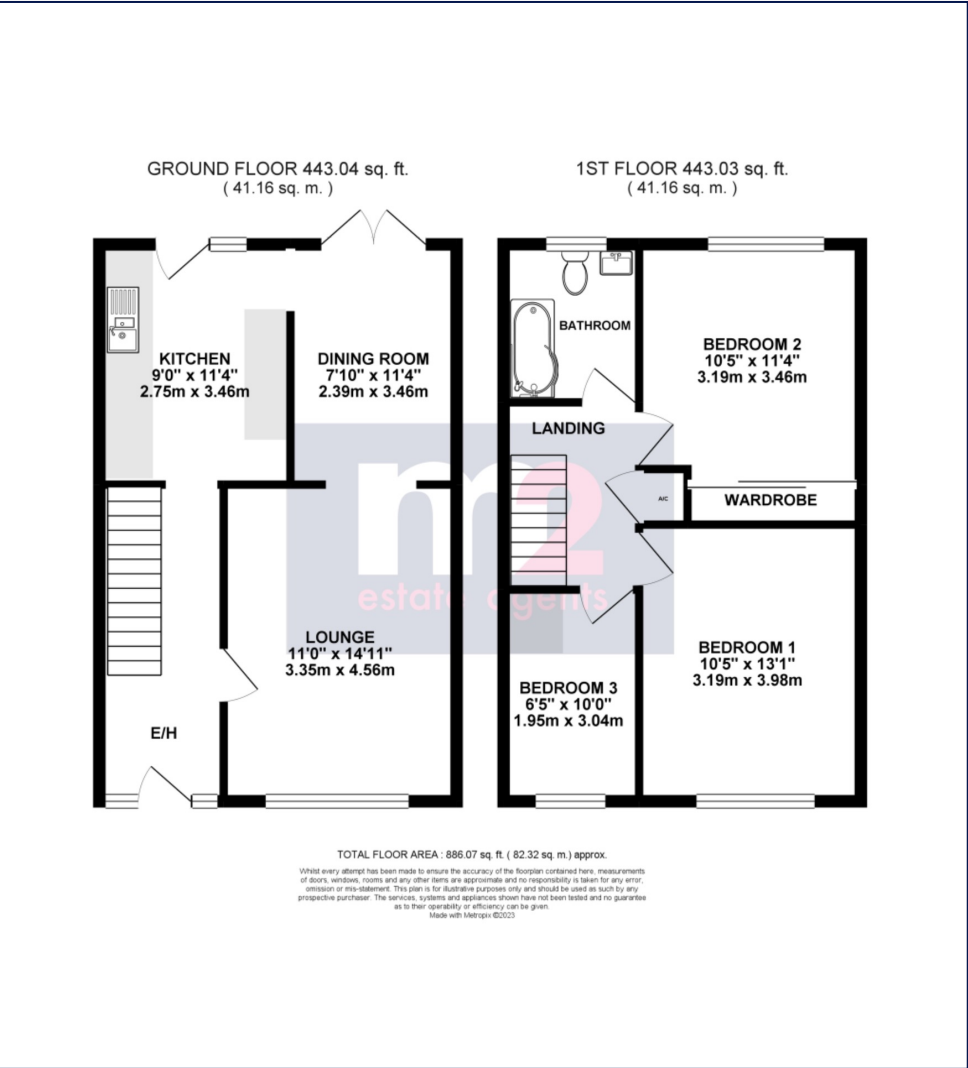
NO CHAIN! 3 BEDROOM END TERRACE HOUSE IN THE CENTRE OF MAGOR, WALKING DISTANCE TO ALL LOCAL AMENITIES, EASY TO MAINTAIN REAR GARDEN, PERFECT FOR FIRST TIME BUYERS OR DOWNSIZING

A well maintained & spacious end terrace house situated in this level location, within walking distance to Magor square and its excellent range of amenities.

The property occupies a good sized easily maintained corner plot and offers good family accommodation comprising: To the ground floor: An entrance hall with stairs to the first floor. A bright lounge faces the front opening to the dining room with French doors to the rear garden. A good size kitchen is fitted with an extensive range of wall and base units with door leading to the garden. To the first floor: A landing with airing cupboard leads to 3 bedrooms, the 2nd bedroom having built in wardrobes. A modern bathroom is fitted with a white suite having a P shaped bath with shower over.

Outside: The property occupies a generous corner plot. To the front: A forecourt enclosed by picket fencing with inset flowerbeds, a gate provides access to the side. To the rear: A large easily maintained garden comprising timber decked seating area leading onto a patio extending to side all enclosed by walling and a maintenance free fencing.

Lease term TBC.



All room sizes are approximate. Electrical installations, plumbing, central heating and drainage installations are noted on the basis of a visual inspection only. They have not been tested and no warranty of condition or fitness for purpose is implied in their inclusion. Potential purchasers are warned that they must make their own enquiries as to the condition of the appliances, installations or any element of the structure or fabric of the property.

M2 Estate Agents for themselves and for the Vendors and Lessors of this property whose agents they are give notice that, (i) the particulars are set out as a general outline only for the guidance of the intended Purchasers or Lessors, and do not constitute part of an offer or contract (ii) all descriptions, dimensions, reference to condition and necessary permissions for the use and occupation and other details are given without responsibility and any intending Purchasers or Tenants should not rely on them as statements or representations of fact but satisfy themselves by inspection or otherwise as to the correctness of each of them (iii) no person in the employment of M2 Estate Agents has any authority to make or give any representation or warranty whatever in relation to this property.