



13 Ffordd Coed Darcy, Llandarcy, Neath, SA10 6FR

Asking Price: £119,950

- Third Floor 2 Bedroom Executive Style Apartment
- Allocated Rear Parking
- Close To All Transport Links
- Ideal First Time Purchase Or Investment Opportunity
- Extremely Well Presented Throughout



Entrance Communal Hallway

Entered via double glazed door to the rear off carpark (with intercom) staircase then giving access to all floors.

Third Floor Landing

Entered via front door giving access to hallway with silver oak effect laminate flooring, attic hatch and doors to:-

Lounge/Kitchen

6.959m x 3.694m (22' 10" x 12' 1")

A spacious light airy room with silver oak effect laminate flooring, spot lighting and double glazed sash window to front and side with open aspect views. The lounge is open plan to a fully fitted and well appointed modern kitchen with a good selection of matching base and wall units skaker style in white with stainless steel handles, high gloss roll top work surface space and preparation area incorporating single drainer sink unit with hot and cold mixer taps over, built in electric cooker with 4 ring gas hob and stainless steel extractor canopy over, space for fridge freezer, plumbing for automatic washing machine and wall mounted boiler (supplying domestic hot water and gas central heating)

Bedroom One

4.541m x 3.288m (14' 11" x 10' 9")

With silver oak effect laminate flooring, built in wardrobe and double glazed sash window to the rear.

Bedroom Two

3.806m x 2.490m (12' 6" x 8' 2")

With silver oak effect laminate flooring and double glazed sash window to the rear.

Bathroom

2.256m x 2.100m (7' 5" x 6' 11")

A three piece suite comprising panel bathwith shower attachment over, low level wc, wash hand basin, part tiled walls and extractor fan.

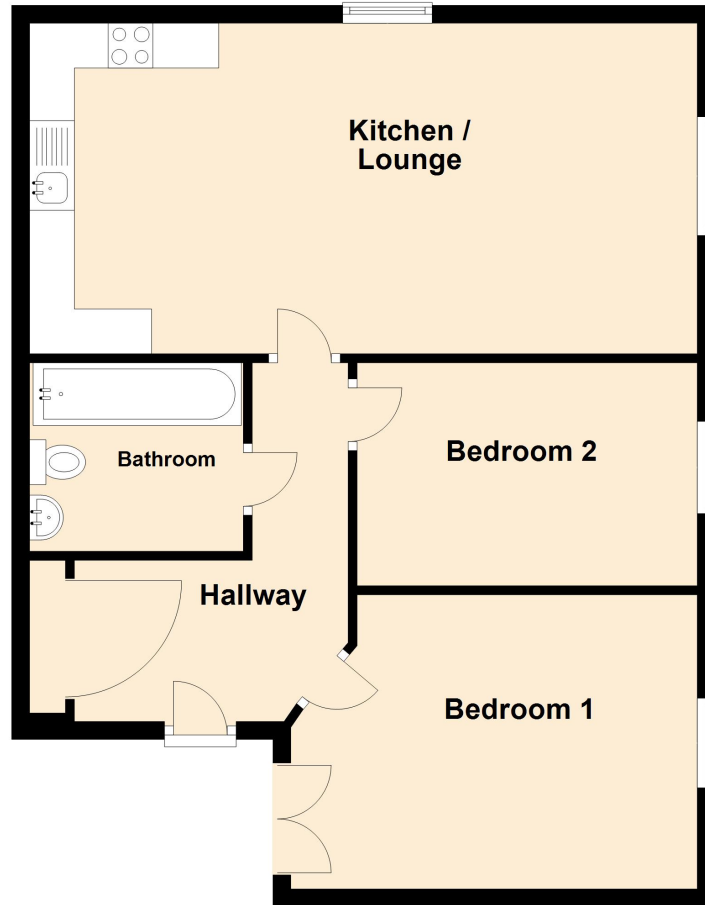
External

With views to front and side and allocated parking to the rear.



Ground Floor

Approx. 64.5 sq. metres (693.8 sq. feet)



Total area: approx. 64.5 sq. metres (693.8 sq. feet)

