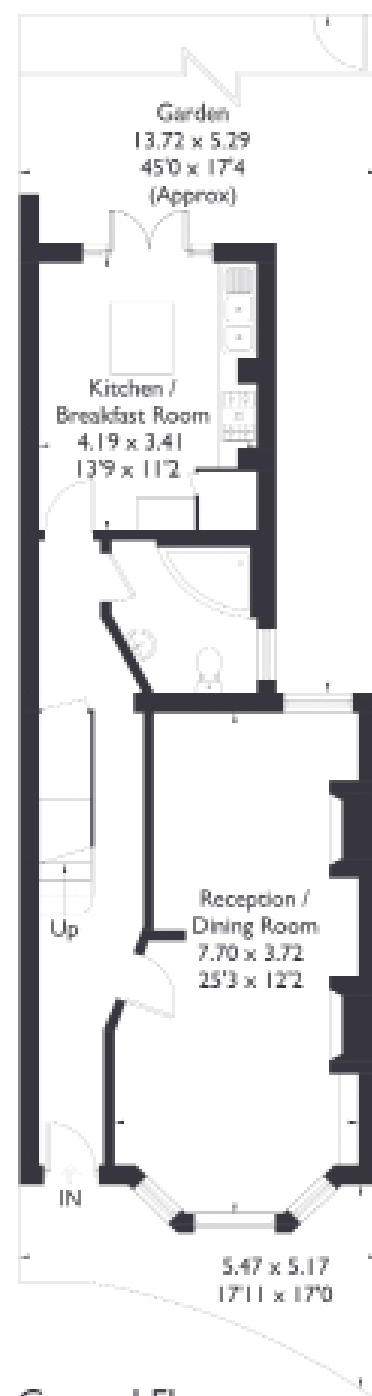


St. Kilda Road, W13

Approximate Floor Area = 160.5 sq m / 1728 sq ft
(Excluding Eaves)



5 BEDROOM HOUSE

St Kilda Road, W13

£1,150,000

Welcome to this beautifully presented five bedroom, three bathroom home in the heart of Ealing.

This spacious chain free property is finished to a high standard throughout and offers an ideal layout for modern family living. The ground floor features a bright and airy open-plan reception room, a sleek bathroom, and an impressive kitchen/living area that opens out onto a decked garden—perfect for entertaining or relaxing outdoors. Upstairs on the first floor, you'll find three generous double bedrooms filled with natural light, complemented by a stylish family bathroom and charming bay windows. The top floor hosts a luxurious principal suite with built-in wardrobes and a shower room, along with an additional well-proportioned double bedroom.

FEATURES

- Five Bedrooms
- Three Bathrooms
- Large Reception Room
- Fielding Primary School Catchment And Elthorne Park High School Catchment
- Northfields Station/ West Ealing Station (Elizabeth Line)
- Elthorne Park Nearby
- EPC Rating D



5 BEDROOM HOUSE

St Kilda Road, W13

St Kilda offers an excellent location for connectivity, with easy access to both West Ealing Station (Elizabeth Line) and Northfields Station, ensuring fast links into Central London and beyond.

The home also falls within the catchment area of the highly regarded Oaklands Primary School and Elthorne High School, making it a fantastic choice for families. EPC Rating D.

