



43 Eldefield, Letchworth Garden City, Hertfordshire, SG6 4BW  
£439,000 - FREEHOLD



**Satchells**











# The Property

Welcome to this beautifully presented family home, where comfort, space, and natural light combine to create an inviting and practical living environment. As you step through the front door, you're greeted by a bright and welcoming entrance hall that sets the tone for the rest of the property—offering a warm, homely feel from the very first moment.

The generously proportioned lounge is a standout feature, designed for relaxation and entertaining alike. A charming fireplace adds character and warmth, while expansive front-facing windows bathe the room in natural sunlight throughout the day. At the rear, elegant French doors open onto a spacious conservatory, creating a seamless connection between indoor and outdoor living. This versatile space is perfect as a second sitting area, dining space, or a spot to enjoy garden views all year round.

The kitchen is both stylish and functional, offering an excellent range of wall and base units that provides ample storage. It's equipped with a gas hob, electric oven, and a stainless steel sink ideally positioned beneath wide front-facing windows that keep the space bright and airy. There is generous room for all essential appliances, including a fridge-freezer, washing machine, and dishwasher—making it perfectly suited to modern family life, complete with a door to the rear garden.

The ground floor also features a sleek and contemporary bathroom, thoughtfully designed with a walk-in shower, WC, and wash hand basin. Natural light from the front-facing windows.

Upstairs, you'll find three well-proportioned bedrooms. Two are generous doubles, offering comfortable and peaceful retreats, while the third is a smaller double that works equally well as a guest room, nursery, or home office.

This home is ideal for a growing family, professional couple, or anyone looking for a thoughtfully laid-out property with plenty of natural light and flexible living space. With its well-maintained interior and a lovely balance of charm and practicality, it's ready to welcome its next owners.

# About Letchworth

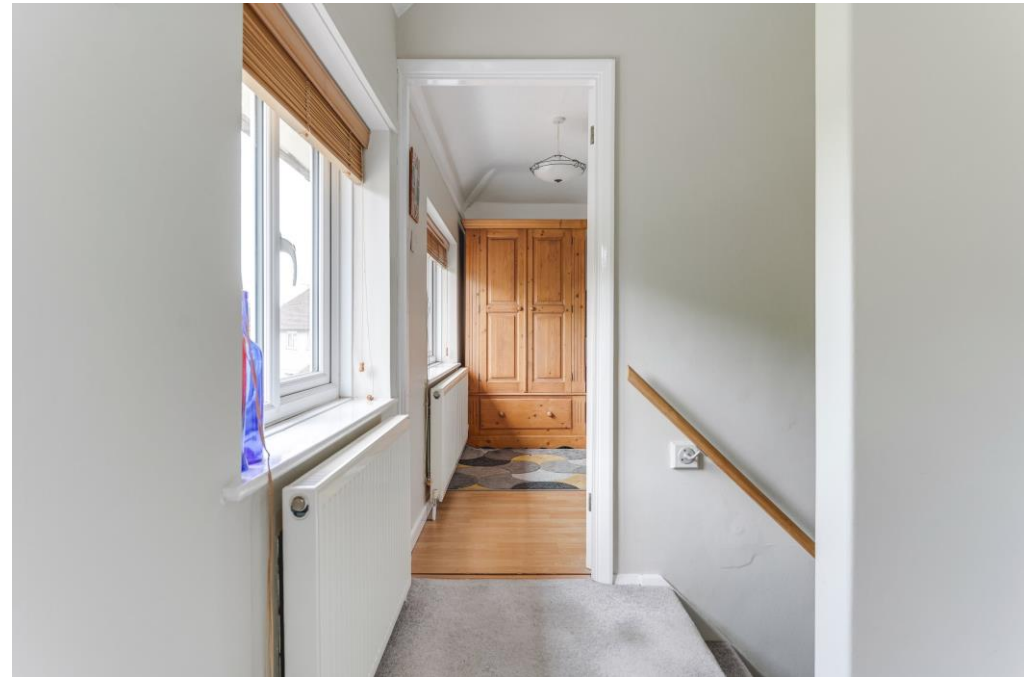
The stunning rear garden is undoubtedly one of the standout features of this home—offering a wonderful blend of space, privacy, and sunshine. Stepping out from either the conservatory or kitchen, you're welcomed onto a generous patio area, perfect for outdoor dining or relaxing with a morning coffee. The garden benefits from convenient side access and includes a useful timber shed for additional storage.

A fantastic size overall, the garden is mainly laid to lawn, making it ideal for families, entertaining, or simply enjoying the outdoors. At the far end, a second patio area catches the sun throughout the day and well into the evening—creating an idyllic spot for summer gatherings or quiet moments at sunset. A striking mature palm tree adds a unique and tropical touch to the space, enhancing the garden's charm and character.

The front garden is attractively presented, mainly laid to lawn and complemented by a variety of well-maintained plants and shrubs that adds a splash of colour and curb appeal. A private driveway provides convenient off-road parking, enhancing the practicality of this charming home.











# Step outside

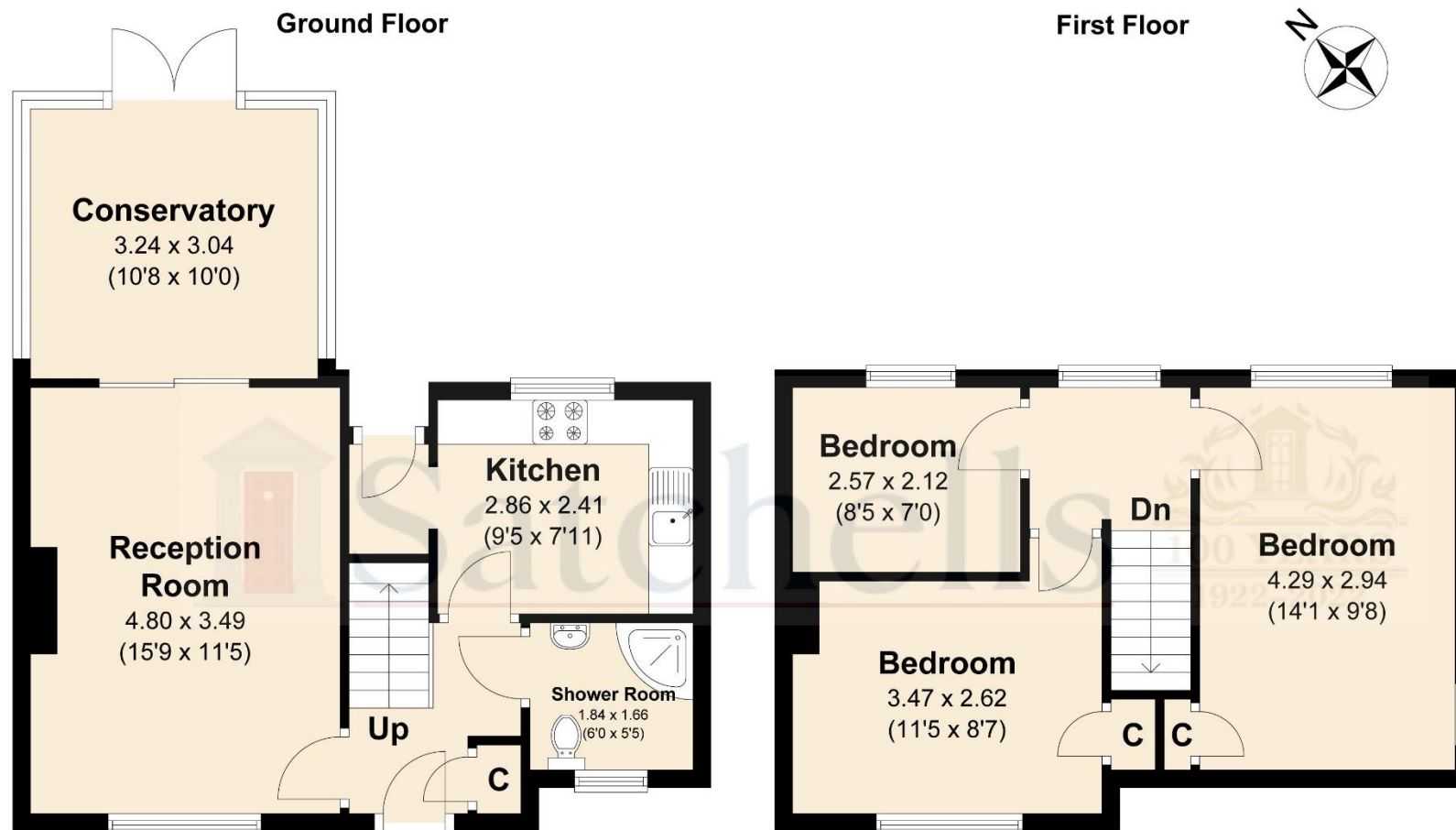
---

Letchworth is the world's first 'Garden City' combining the best elements of town and country living according to the vision of the town's founder Ebenezer Howard. The area offers plenty of outdoor options including the Garden City Greenway and Norton Common's 60 acres of grassland and woodland close to the town centre. Letchworth offers tree-lined avenues, wide walkways, relatively uncongested roads, and a wealth of shops, coffee houses, and restaurants. Letchworth train station offers a regular service to King's Cross. There are also rail services to Cambridge and the North via Peterborough. By road, Letchworth is just off the A1 Junctions 9 & 10 and approximately 22 minutes from Junction 23 of the M25. The M1 North can be accessed via the A507. Luton Airport is only around 12 miles away.

---











Satchells  
Station Place, Letchworth Garden City, Hertfordshire, SG6 3AQ.  
Tel: +44 (0)1462 480077  
E mail: [letchworth@satchells.co.uk](mailto:letchworth@satchells.co.uk) [www.satchells.com](http://www.satchells.com)

