



Chiswick High Road, London, W4 1TE

Cow & Co
LONDON



A stunning two bedroom apartment offering bright and spacious accommodation throughout along with excellent contemporary style fixtures and fittings. The property is a beautifully presented and offers a fantastic opportunity to acquire, either your first home or a long term investment in Chiswick.

This two bedroom flat is in an ideal location for transport from Stamford Brook Underground Station and many bus routes, including the 237 stopping at Shepherds Bush Underground station and several buses via Hammersmith. There is easy access to the A4 and M4 with routes to central London, the west and Heathrow.

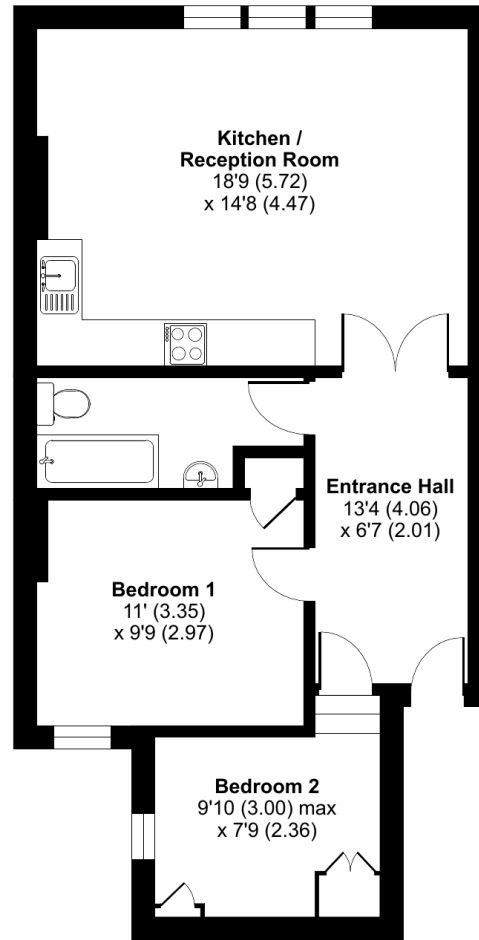


- Two double bedroom apartment situated in the heart of Chiswick
- River Thames just 8 minutes walk
- Security entry phone system to the front and rear of the building
- Presented to a high standard
- Sleek contemporary style kitchen open plan to lovely living area with ample space to dine and entertain
- Remodelled well appointed bathroom with shower
- Close proximity to local transport links and amenities
- No onward chain

Chiswick High Road, London, W4

Approximate Area = 643 sq ft / 59.7 sq m

For identification only - Not to scale



FIRST FLOOR



Floor plan produced in accordance with RICS Property Measurement Standards incorporating International Property Measurement Standards (IPMS2 Residential). © nchecon 2024. Produced for Cow & Co Properties Ltd. REF: 1147260

Tel: 0208 065 0010
Email: thehub@cowandco-london.com
Web: cowandco-london.com

Agents note: All measurements are approximate and whilst every attempt has been made to ensure accuracy they are for general guidance only and must not be relied on. The fixture and fittings referred to have not been tested and therefore no guarantee can be given that they are in working order. Internal photographs are reproduced for general information and it must not be inferred that any item shown is included with the property.

Cow & Co
LONDON