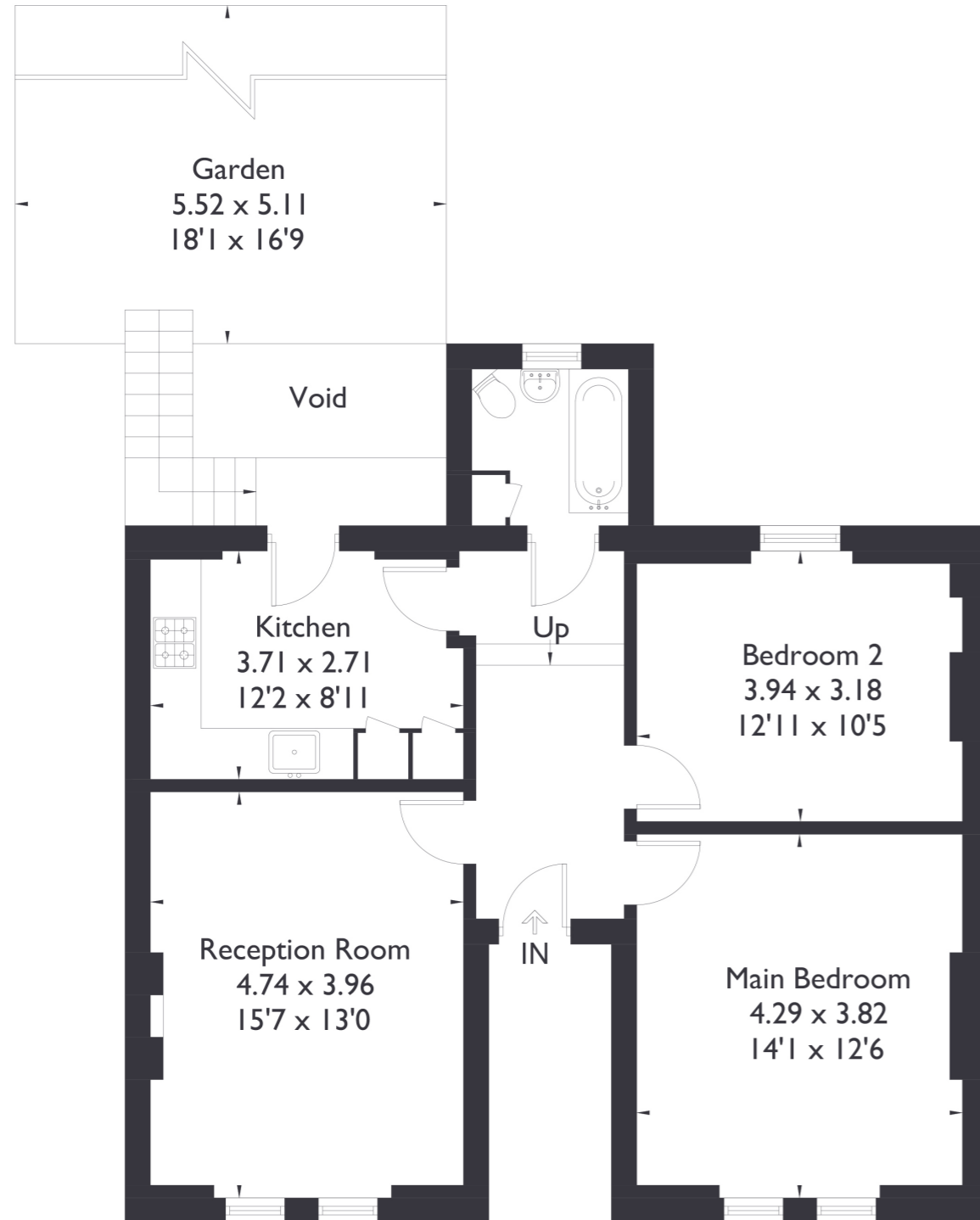


10B Hastings Road, W13

Approximate Floor Area = 70.8 sq m / 762 sq ft



First Floor



2 BEDROOM FLAT

Hastings Road, W13

£585,000

Step into this delightful two bedroom, one bathroom flat situated in a coveted location in West Ealing. Positioned on the first floor, this property welcomes you with a spacious hallway that effortlessly connects to all rooms, enhancing flow and functionality throughout. The reception space is bathed in natural light, creating a warm and inviting atmosphere that extends throughout the flat.

FEATURES

- Two Bedrooms
- One Bathroom
- Separate Kitchen/Living
- Private Garden
- West Ealing Station
- Ealing Broadway Amenities
- EPC Rating D



2 BEDROOM FLAT

Hastings Road, W13

Both bedrooms are generously sized, offering ample space for double beds and featuring stunning high ceilings that add to the sense of airiness and grandeur.

A highlight of this property is the wonderful kitchen, where culinary pursuits are sure to flourish. Step outside from the kitchen to discover a private south facing garden, providing an oasis of tranquillity and a perfect spot for al fresco dining. Convenience is key, with West Ealing station, part of the Elizabeth line, just a 10 minute stroll away, facilitating effortless commutes across the city.

Additionally, Ealing Broadway amenities are within easy reach, a mere 15-minute walk away, offering an array of shopping, dining, and entertainment options.

EPC Rating D.

