

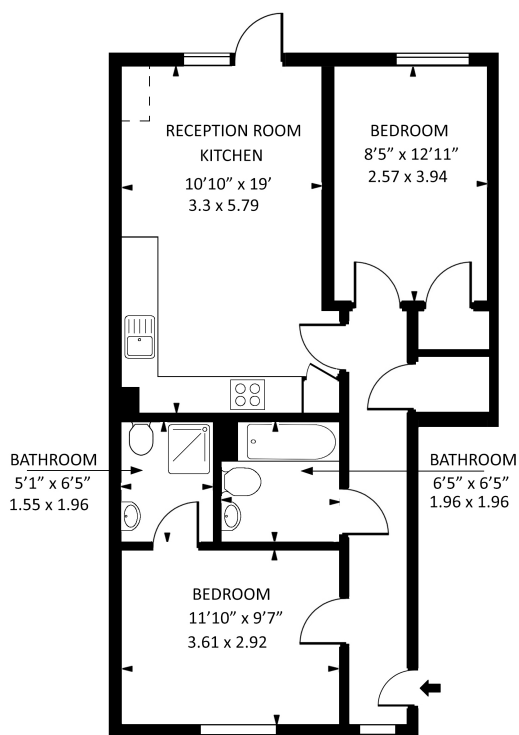


Flat 9 Somerset Court, Thamesdale, London Colney, St Albans, Hertfordshire, AL2 1TP

£290,000

- Two Bedroom Apartment
- Private Patio
- Off Street Parking
- Modern Finish Throughout
- Communal Garden
- Ample Storage

SOMERSET COURT, LONDON COLNEY, AL2



GROUND FLOOR

Approx gross internal area : 624 sq ft - 58 sq m

Measured in accordance with RICS guidelines. Every attempt is made to ensure accuracy
However all measurements are approximate.
The floor plan is illustrative purposes only and is not to scale
www.tomekphotography.co.uk

