



Dalling Road, W6 0HF

**Cow & Co**  
LONDON



A superb three bedroom first and second floor maisonette located in the ever popular area known as Brackenbury village. This bright and spacious property is ideally situated just moments away from Ravenscourt Park.

With its own private front door, entrance hallway, three good sized bedrooms, a large family bathroom and a light filled kitchen/dining room with access on to a private and secluded garden.

Dalling Road is within close proximity to King Street, Hammersmith with its abundance of shops and amenities and there are many fantastic schools including John Betts, Brackenbury Primary and West London Free School just a short walk away.

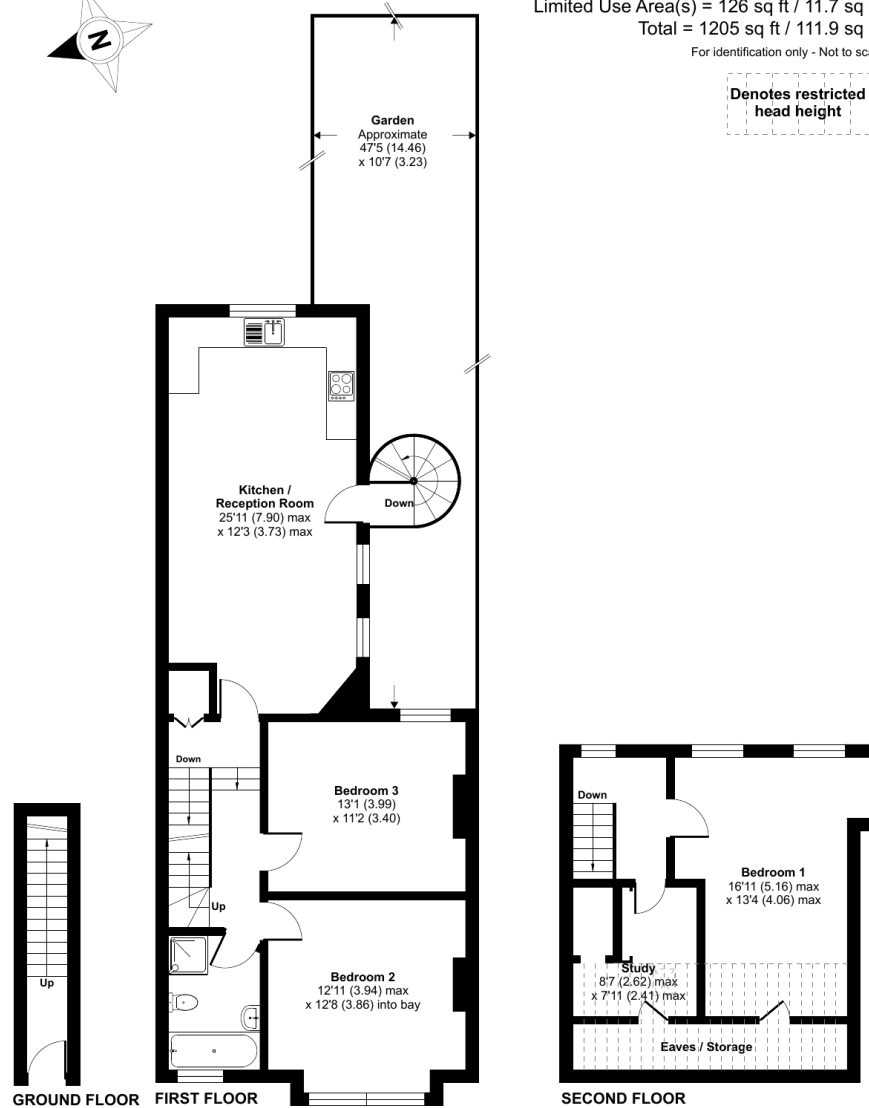


- Edwardian maisonette
- Three bedroom apartment situated in popular location
- Private garden
- Brackenbury Village
- Arranged over two floors
- Large kitchen/dining
- Leasehold with the freehold included



# Rosedale Terrace, Dalling Road, London, W6

Approximate Area = 1079 sq ft / 100.2 sq m  
 Limited Use Area(s) = 126 sq ft / 11.7 sq m  
 Total = 1205 sq ft / 111.9 sq m  
 For identification only - Not to scale



Floor plan produced in accordance with RICS Property Measurement Standards incorporating International Property Measurement Standards (IPMS2 Residential). © nchecon 2023. Produced for Cow & Co Properties Ltd. REF: 1050028

Tel: 0208 065 0010  
 Email: thehub@cowandco-london.com  
 Web: cowandco-london.com

Agents note: All measurements are approximate and whilst every attempt has been made to ensure accuracy they are for general guidance only and must not be relied on. The fixture and fittings referred to have not been tested and therefore no guarantee can be given that they are in working order. Internal photographs are reproduced for general information and it must not be inferred that any item shown is included with the property.

**Cow & Co**  
 LONDON