



Day & Co
ESTATE AGENTS

28 Cavendish Street
Keighley
BD21 3RG



27 Carlton Street, Haworth,
Keighley, West Yorkshire, BD22
8JY

£155,000

T: 01535 664609

W: www.dayandcoestateagents.co.uk

E: keighley@dayandcoestateagents.co.uk

- Awaiting EPC
- Two Bedrooms
- Lounge With Multi-Fuel Burning Stove
- Sought After Historic Village Of Haworth/NO CHAIN

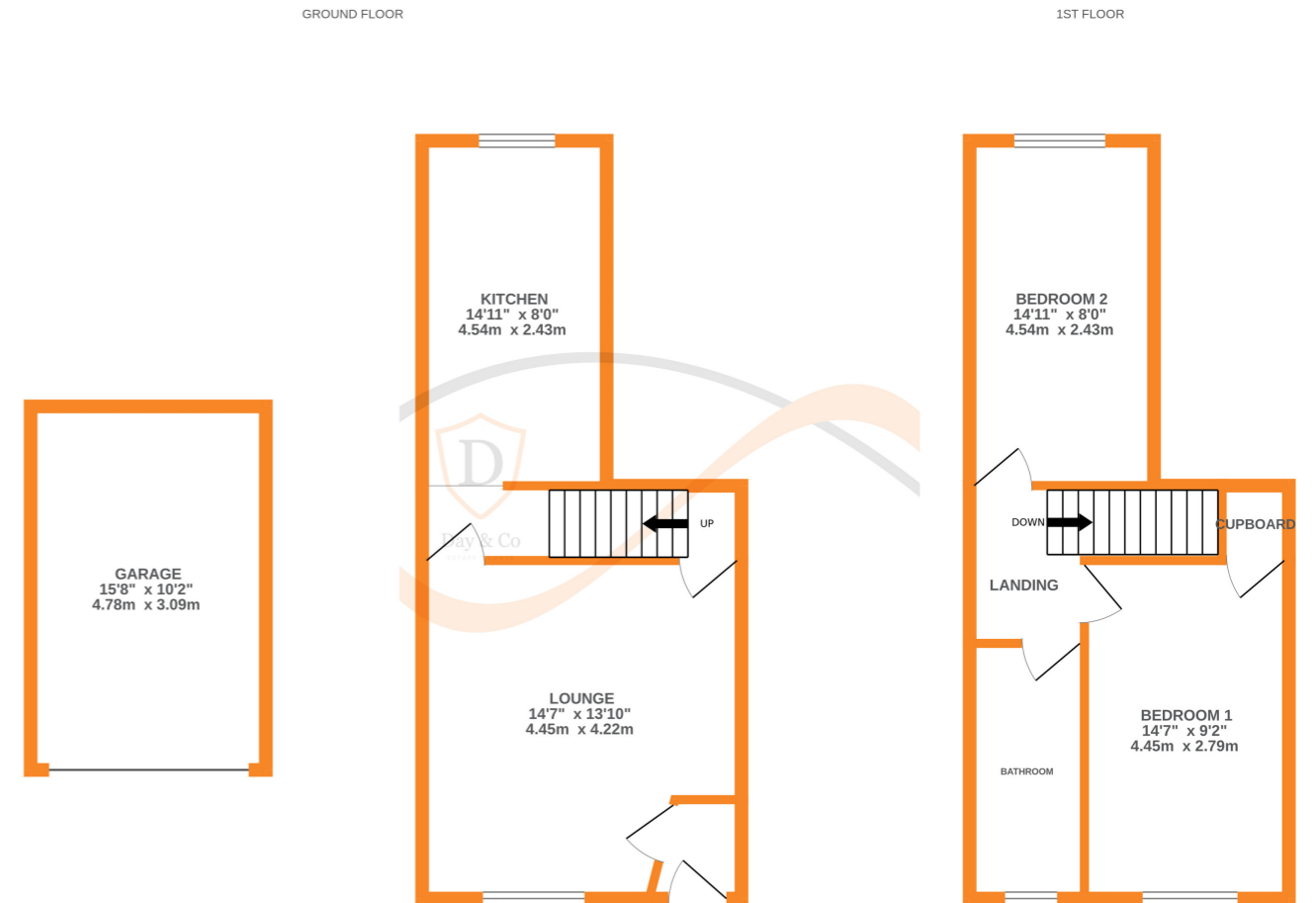
- Superbly Presented End Of Terrace
- Modern Kitchen & Bathroom
- Single Garage & Parking Space

SUMMARY

****A SUPERBLY PRESENTED 2 BEDROOM END OF TERRACE, SOUGHT AFTER HISTORIC VILLAGE OF HAWORTH WITH EXCELLENT ACCESS TO VILLAGE AMENITIES & ATTRACTIONS!!**** Having modern kitchen & bathroom, lounge with stone flagged flooring & multi-fuel burning stove, SINGLE GARAGE & PARKING SPACE!! OFFERED FOR SALE WITH NO ONWARD CHAIN!! Awaiting EPC.

FULL DESCRIPTION

Of interest to a variety of buyers is this superbly presented two bedroom end of terrace situated in the sought after historic village of Haworth with excellent access to village amenities. The accommodation comprises of an entrance vestibule opening into the spacious lounge which has stone flagged flooring, multi-fuel burning stove in feature fireplace, double glazed window to the front and a radiator. There is access to a utility cellar. The kitchen has a range of modern base and wall mounted units with Oak worktops, solid wood flooring, integrated double oven and hob, double glazed window to the rear. To the first floor there are two good size bedrooms, the master having a built in storage cupboard and views to the front. The house bathroom completes the internal accommodation having a three piece suite comprising of a bath with shower over, WC, wash hand basin, chrome heated towel rail, double glazed window to the front. Externally there is a parking space and single garage with electric door. Offered for sale with no onward chain, awaiting EPC.



Whilst every attempt has been made to ensure the accuracy of the floorplan contained here, measurements of doors, windows, rooms and any other items are approximate and no responsibility is taken for any error, omission or mis-statement. This plan is for illustrative purposes only and should be used as such by any prospective purchaser. The services, systems and appliances shown have not been tested and no guarantee as to their operability or efficiency can be given.
Made with Metropix ©2024