



Day & Co  
ESTATE AGENTS

28 Cavendish Street  
Keighley  
BD21 3RG



7 Southlea Avenue, Oakworth,  
Keighley, West Yorkshire, BD22  
7NL

£190,000

T: 01535 664609

W: [www.dayandcoestateagents.co.uk](http://www.dayandcoestateagents.co.uk)

E: [keighley@dayandcoestateagents.co.uk](mailto:keighley@dayandcoestateagents.co.uk)



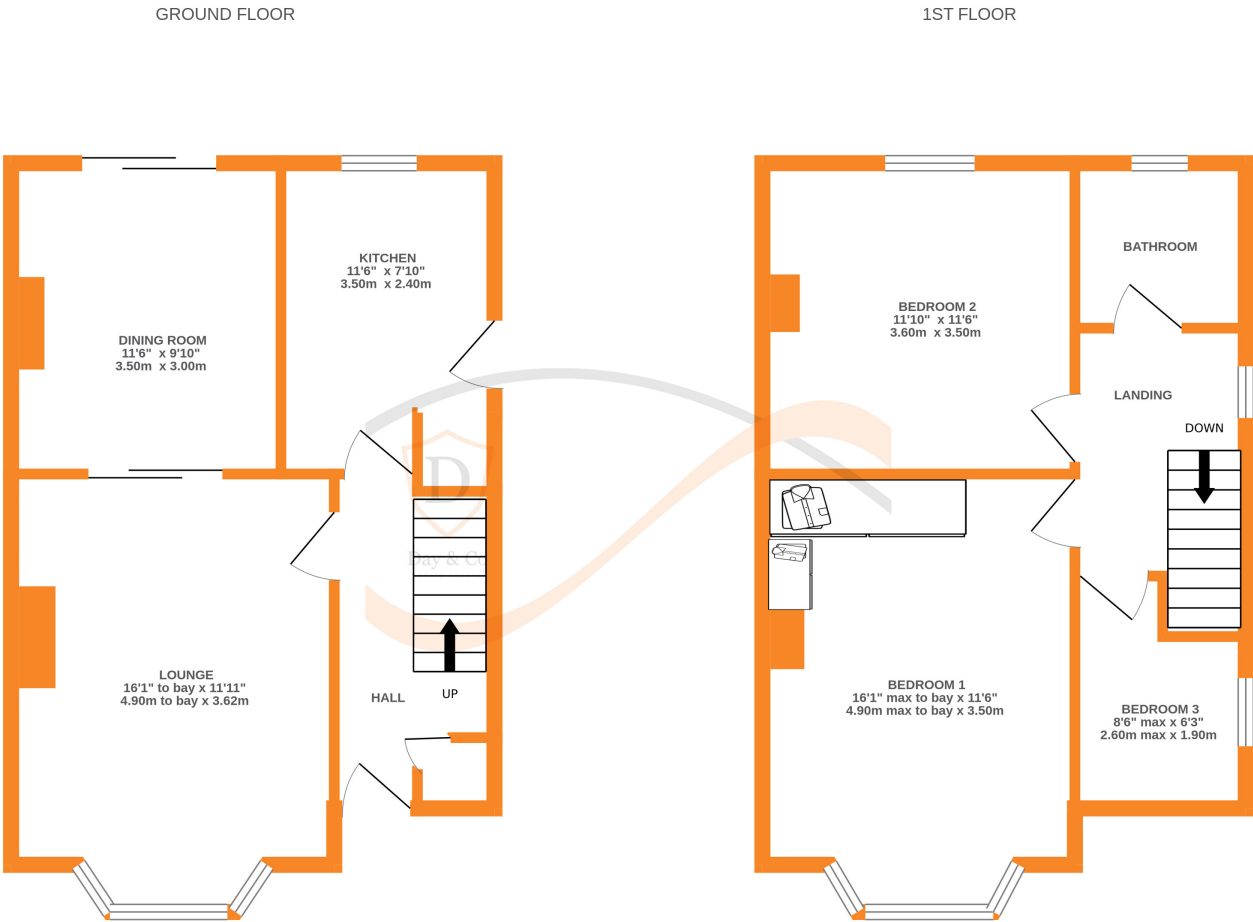
- SEMI-DETACHED HOUSE
  - TWO RECDEPTION ROOMS
  - DRIVE & GARAGE
- THREE BEDROOMS
  - LARGE REAR GARDEN
  - AWAITING EPC

SUMMARY

\*\* SEMI-DETACHED FAMILY HOME, THREE BEDROOMS, DESIREABLE CUL-DE-SAC LOCATION, LARGE REAR GARDEN, DISTANT VIEWS TO THE REAR, DRIVE & GARAGE, REQUIRES SOME MODERNISATION, GAS CENTRAL HEATING, DOUBLE GLAZING, AWAITING EPC \*\*

FULL DESCRIPTION

Offered for sale is this bay fronted, three bedroom semi-detached house situated in a cul-de-sac location benefitting from a large rear garden and distant views. This property requires some modernisation with the accommodation briefly comprising of an entrance hallway, lounge with bay window to the front and sliding doors opening to the dining room which has patio doors opening to the rear garden, separate kitchen which has a range of units, side entrance door, side porch. First Floor - Landing, three bedrooms and a bathroom with a suite comprising of a rectangular bath, w.c., wash hand basin, window to the rear. Gas Central Heating & Double Glazing. Outside - Large rear garden which really must be viewed to fully appreciate its size, front garden, drive, garage. Awaiting EPC



Whilst every attempt has been made to ensure the accuracy of the floorplan contained here, measurements of doors, windows, rooms and any other items are approximate and no responsibility is taken for any error, omission or mis-statement. This plan is for illustrative purposes only and should be used as such by any prospective purchaser. The services, systems and appliances shown have not been tested and no guarantee as to their operability or efficiency can be given.  
Made with Metropix ©2025