



Tewkesbury

01684 293246



3 Newland Place, Tewkesbury, GL20 5QR

This is a spacious solid home that really does pack a punch!

From the moment you enter the property you will undoubtedly get a sense of space and light. A small entrance hall leads into the open plan lounge/dining room creating a great entertaining space with an attractive fireplace with wood surround.

A door leads through to the galley kitchen which is fitted with a range of modern wall and base units with worktops over. There is space and plumbing for a washing machine and gas cooker.

From the kitchen a door leads out to the courtyard which provides excellent space for a bistro table and bin storage with gated access via a pathway to the front of the property.

On the first floor there is a large double bedroom and a family bathroom which has the advantage of panel bath with shower over, low level wc and pedestal wash basin.



On the second floor there are two further double bedrooms.

Outside at the front of the property there is a small low maintenance gated garden.

Newland Place is located at the end of Barton Road providing excellent and convenient access to the town centre and its wide range of amenities, which include The Roses Theatre, newly built Deveureux Medical centre and hospital; supermarkets, schools, and leisure centres.

Tewkesbury also benefits from excellent transport links being on the M5 J9; within 1 mile of Ashchurch Train Station; a daily coach link with London and local bus links to neighbouring towns and cities.

Ground Floor

Lounge 12'2"x10'5"
 Dining Area 10'4"x9'4"
 Kitchen 12'3"x5'11"

First Floor

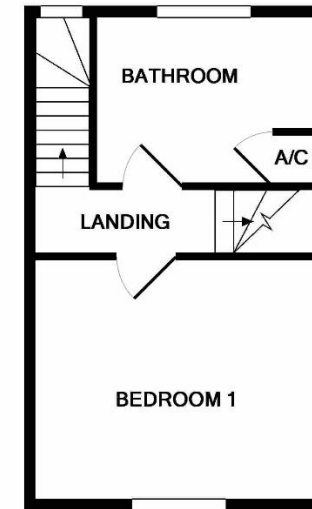
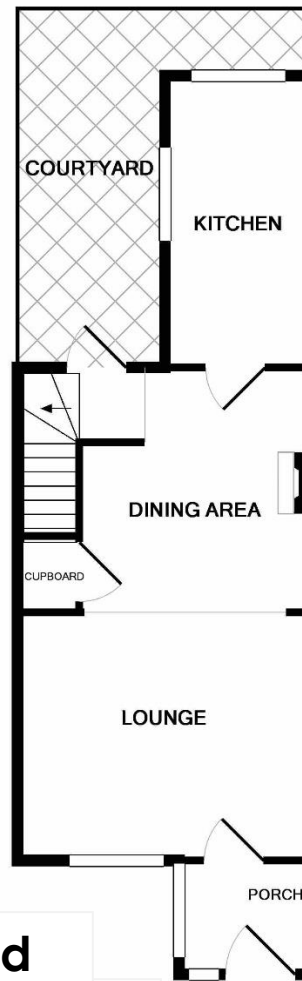
Bedroom 1 12'3"x10'5"
 Family Bathroom 9'6"x7'5"

Second Floor

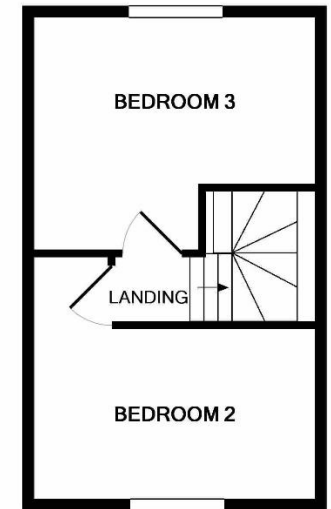
Bedroom 2 12'1"x10'7" (max)
 Bedroom 3 12'6"x10'5" (max)

Outside

Small Courtyard with gated access to the front



1ST FLOOR



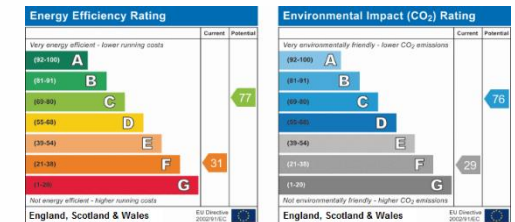
2ND FLOOR

3RD FLOOR

Guide Price £205,000 Freehold

Viewing strictly by arrangement with Engall Castle Ltd
 155 High Street Tewkesbury Gloucestershire GL20 5JP
 Office hours: Mon – Fri 9am to 5.30pm, Sat 9am to 2pm
 email: sales@engallcastle.com

01684 293 246
www.engallcastle.com



This floorplan is provided for guidance only as an approximate layout of the property and should not be relied upon as a statement of fact.

Agents Note

These property details are set out as a general outline only and do not constitute any part of an Offer or Contract. Any services equipment, fittings or central heating systems have not been tested and no warranty is given or implied by Engall Castle Ltd that these are in working order. Buyers are advised to obtain verification from their solicitor or surveyor. Fixtures and fittings or other items are not included unless specifically described. All measurements, distances and areas are approximate and for guidance only and should not be relied upon for the purposes of fitting carpets or furniture etc. These property details and all statements within this document are provided without responsibility on behalf of Engall Castle Ltd or its employees or representatives and should not be relied on as statements of fact. Prospective purchasers must satisfy themselves as to the accuracy of all details pertaining to the property.

