



19 Silver Drive, FRIMLEY, Surrey GU16 9QN

GUIDE PRICE £725,000 Freehold

Jigsaw Estates are proud to offer this well presented, extended detached home situated in the desirable Silver Drive area on the borders of Camberley and Frimley. The property is within walking distance of Heather Ridge Infants school, Ravenscote Juniors and Tomlinscote Secondary Schools and of course the ever popular Pine Ridge Golf Club. Accommodation comprises four bedrooms, with the principle bedroom enjoying both an en-suite shower room and a dressing room. Downstairs there is the study/family room (formerly the garage), living room, dining room, conservatory, kitchen breakfast room with fitted appliances, utility room and the essential downstairs cloakroom. The garden is also a major feature of the property as it is westerly facing with a high degree of privacy. There is a large patio area and is mainly laid to lawn, side storage/access area, timber built cabin/workshop and a wood bark area at the rear. We at Jigsaw Estates love this property and we hope you do too!

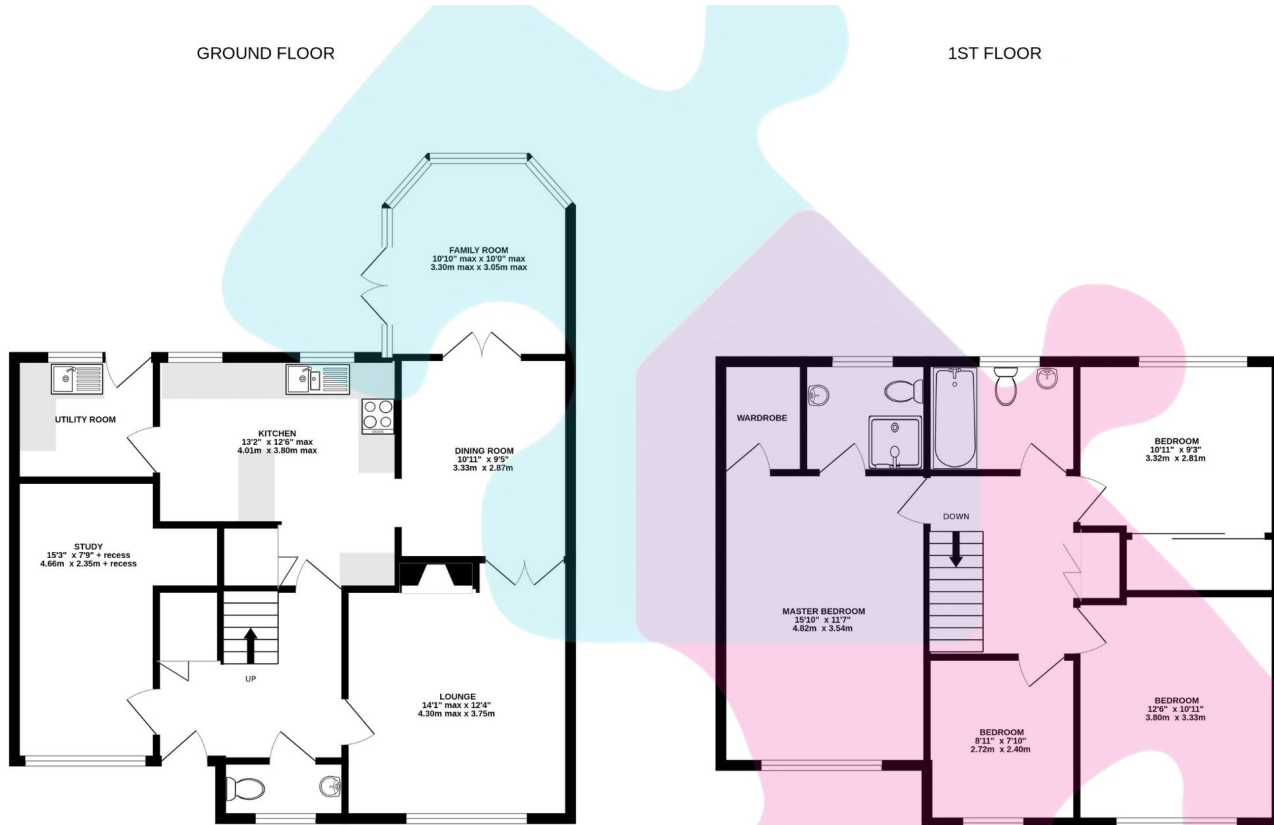
Council Tax Band E

Mis-descriptions Act: We wish to inform prospective purchasers that we have not carried out a detailed



GROUND FLOOR

1ST FLOOR



Whilst every attempt has been made to ensure the accuracy of the floor plan, measurements are approximate and no responsibility is taken for any error or mis-statement. The plan is for illustrative purposes only.

- HIGHLY SOUGHT AFTER SILVER DRIVE LOCATION CLOSE TO HEATHER RIDGE INFANTS, RAVENSCOTE JUNIORS & TOMLINCOTE SECONDARY SCHOOLS
- WESTERLY FACING, VERY SECLUDED GARDEN
- CONSERVATORY
- PRINCIPLE SUITE INCLUDING EN-SUITE SHOWER ROOM AND DRESSING ROOM
- FAMILY BATHROOM
- EXTENDED DETACHED HOME PRESENTED IN GOOD ORDER THROUGHOUT
- THREE RECEPTIONS
- KITCHEN/BREAKFAST ROOM & UTILITY
- TWO FURTHER DOUBLE BEDROOMS & ONE SINGLE BEDROOM
- DRIVEWAY PARKING FOR THREE CARS

Energy Efficiency Rating

	Current	Potential
Very energy efficient - lower running costs		
(92-100) A		
(81-91) B		
(69-80) C		79
(55-68) D	67	
(39-54) E		
(21-38) F		
(1-20) G		
Not energy efficient - higher running costs		
England, Scotland & Wales		EU Directive 2002/91/EC

