



daniels
danielsestateagents.co.uk

daniels
danielsestateagents.co.uk



Barratt Court, Jubilee Close, Harlesden, London NW10 9DY
£1,500 pcm



PROPERTY DESCRIPTION

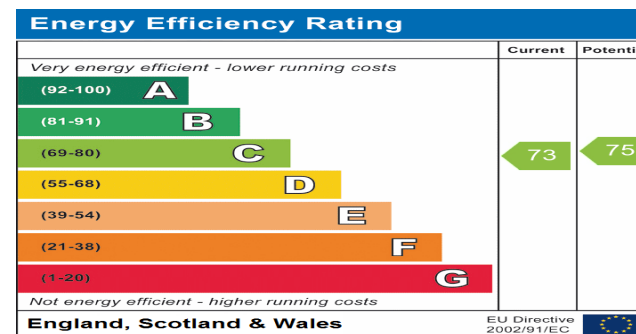
AVAILABLE 26th AUGUST...

A spacious and well presented ONE BEDROOM APARTMENT set on the TOP FLOOR of this SMALL MODERN DEVELOPMENT.

The property boasts SPACIOUS and BRIGHT RECEPTION ROOM, FITTED KITCHEN, MODERN BATHROOM SUITE & DOUBLE BEDROOM, located within close proximity to a variety of shops and amenities on High Street Harlesden and also located within a short walking distance to Willesden Junction Underground and Overground Station.

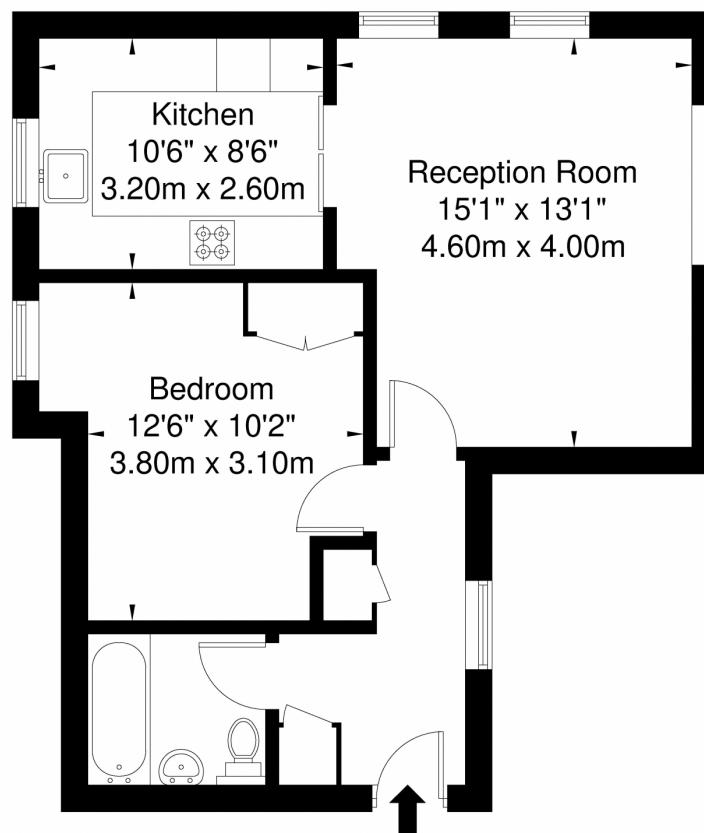
POINTS OF INTEREST

- ONE BEDROOM FLAT
- TOP FLOOR
- SPACIOUS THROUGHOUT
- FITTED KITCHEN
- CLOSE TO WILLESDEN JUNCTION STATION
- CLOSE TO AMENITIES



Barrett Court, Jubilee Close NW10 9DW

Approx. Gross Internal Area = 51.1 sq m / 550 sq ft



Third Floor

Ref

Copyright

BLEU
PLAN

The Floor plan is not to scale and measurements and areas shown are approximate and therefore should be used for illustrative purposes only. The plan has been prepared in accordance with the RICS code of Measuring Practice and whilst we have confidence in the information produced it must not be relied on. If there is any aspect of particular importance, you should carry out or commission your own inspection of the property.

Copyright @ BLEUPLAN