



## Perkin Field, Terrington St Clement, King's Lynn

£275,000

A detached 3 bedroom house on the popular Perkin Field development situated in the popular village of Terrington St Clement. The property offers Kitchen, Lounge, Dining Room, Conservatory, Downstairs W/C, Three Bedrooms with an en suite to master, Bathroom, Garage and an enclosed rear garden. Local amenities can be found in the village including a post office, chemist and primary school, with more extensive facilities found in King's Lynn Town Centre including a main line rail link into Cambridge and London King's Cross.

## Entrance Hallway

UPVC front door opening to entrance hallway, laminate flooring, one radiator, one double glazed window, one cupboard.

## Lounge

Laminate flooring, one double glazed window, one double glazed sliding door to conservatory, one radiator.

## Kitchen

Tiled flooring, one double glazed window, fitted units, sink, electric oven, hob and extractor, space for washing machine & fridge freezer.

## Dining Room

12' 06" x 8' 01" (3.81m x 2.46m) Laminate flooring, one double glazed window, one double glazed patio door leading to rear garden patio area, one radiator.

## Conservatory

Double glazed patio door, tiled flooring.

## Landing

Fitted carpets, loft hatch access

## Bedroom One

12' 05" x 10' 05" (3.78m x 3.17m) Fitted carpet, one radiator, one double glazed window

## Bedroom Two

9' 0" x 9' 04" (2.74m x 2.84m) Fitted carpet, one radiator, one double glazed window

## Bedroom Three

6' 05" x 7' 01" (1.96m x 2.16m) Fitted carpet, one radiator, one double glazed window

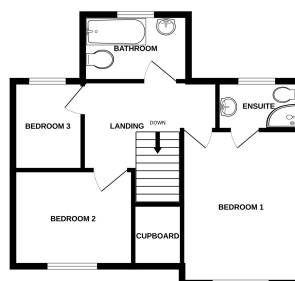
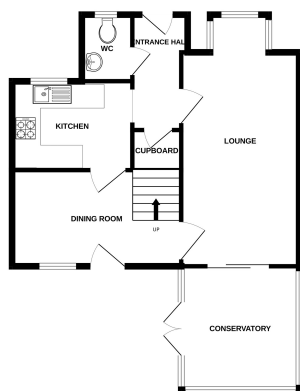
## En Suite

5' 03" x 7' 05" (1.60m x 2.26m) Tiled flooring, corner shower cubical, towel radiator, low flush w/c, pedestal sink, one double glazed window.



GROUND FLOOR

1ST FLOOR



Whilst every attempt has been made to ensure the accuracy of the floorplan contained here, measurement of doors, windows, stairs and any other items are approximate and no responsibility is taken for any error, omission or mis-statement. This plan is for illustrative purposes only and should be used as such by any prospective purchaser. The renderings, systems and appliances shown have not been tested and no guarantee as to their quantity or efficiency is given.  
Issue: 06/10/2022