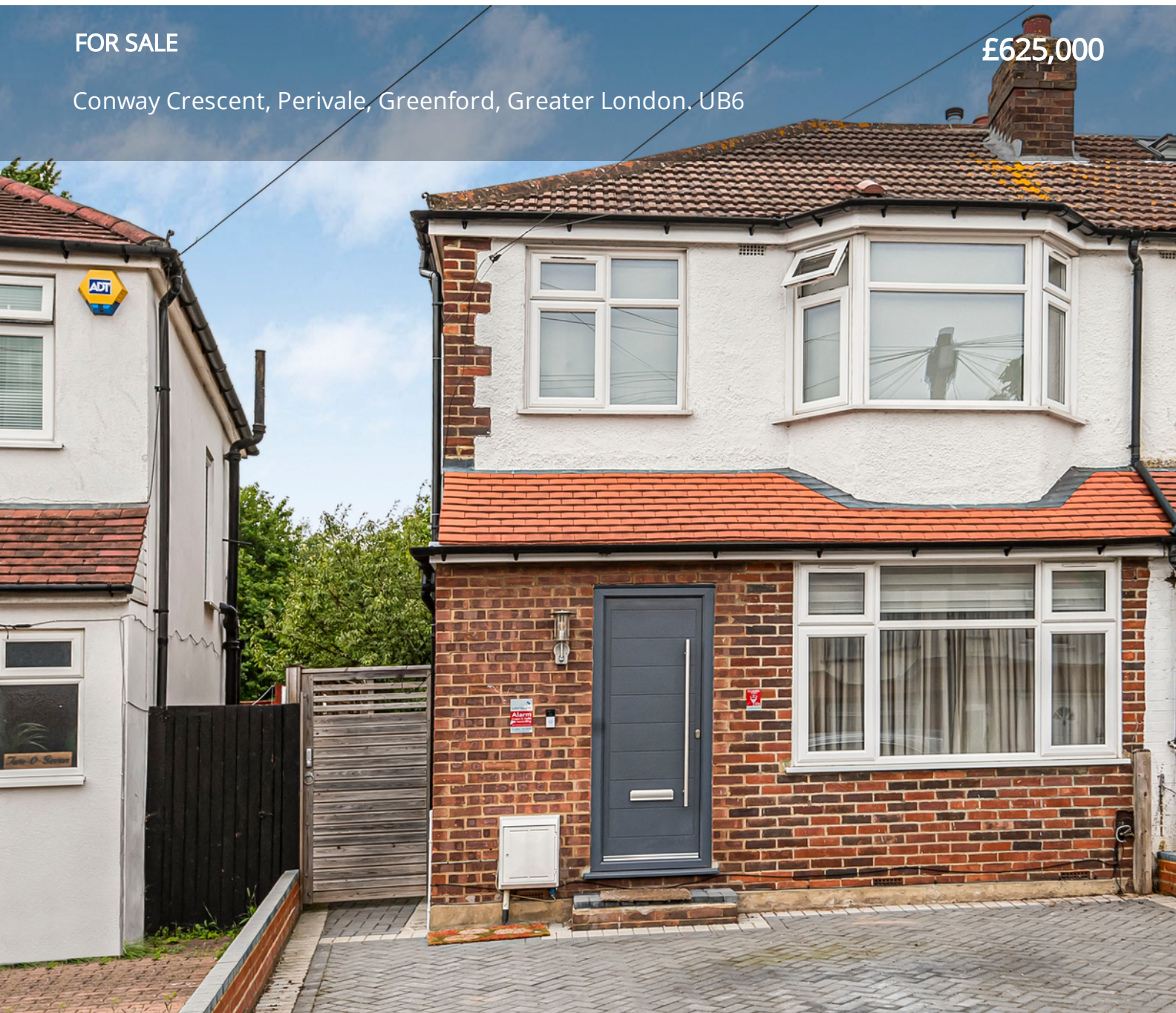


FOR SALE

£625,000

Conway Crescent, Perivale, Greenford, Greater London, UB6



Peter Gamble & Co. offer to the market this beautifully presented 3 BEDROOM, end of terrace home!

Situated on this quiet residential street in the ever popular Medway Village this property boasts a modernised decor throughout and flexible living spaces.

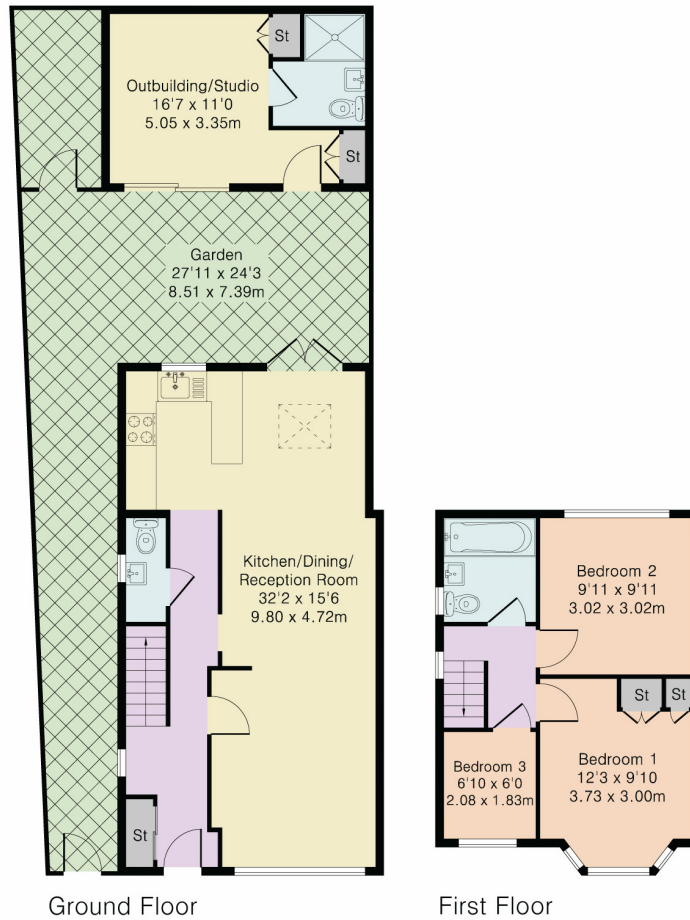
To the ground floor the property comprises a large open plan layout, with the extended kitchen allowing a spacious dining area leading directly onto the garden. There is also the downstairs w/c just off the entrance hall.

The garden is a lovely space with the added benefit of a high quality fully insulated outbuilding which has





Approximate Gross Internal Area 1043 sq ft – 97 sq m  
 Ground Floor Area 514 sq ft – 48 sq m  
 First Floor Area 347 sq ft – 32 sq m  
 Outbuilding Area 182 sq ft – 17 sq m



Although Pink Plan Ltd ensures the highest level of accuracy, measurements of doors, windows and rooms are approximate and no responsibility is taken for error, omission or misstatement. These plans are for representation purposes only as defined by RICS code of measuring practise. No guarantee is given on total square footage of the property within this plan. The figure icon is for initial guidance only and should not be relied on as a basis of valuation.



Energy Efficiency Rating		Current	Potential
Very energy efficient - lower running costs			
(92+)	<b>A</b>		
(81-91)	<b>B</b>		
(69-80)	<b>C</b>		77
(55-68)	<b>D</b>	61	
(39-54)	<b>E</b>		
(21-38)	<b>F</b>		
(1-20)	<b>G</b>		
Not energy efficient - higher running costs			
England, Scotland & Wales		EU Directive 2002/91/EC	