



58 Woodside Road, Guildford, Surrey. GU2 8HH

- No Onward Chain
- Two Bedrooms
- Lounge
- Gas Central Heating
- Double Glazed
- Generous Garden
- Scope To extend (STP)
- Fitted Kitchen
- Must Be Seen
- Bathroom



PROPERTY DESCRIPTION

This semi detached home comes to the market with scope to extend (STP) the ground floor offers a generous reception room, bathroom and fitted kitchen whilst the first floor boasts two double bedrooms and cloakroom. Further benefits include gas central heating, double glazing and a large rear garden. Local amenities are nearby as are bus routes but to fully appreciate the accommodation viewings are highly recommended. NO ONWARD CHAIN.



ROOM DESCRIPTIONS

Ground Floor

Entrance Hall

Stairs to first floor landing, doors to:

Lounge

Front and rear aspect double glazed window, radiator.

Kitchen

Rear aspect double glazed window, range of units, space for appliances, rear aspect door.

Bathroom

Frosted double glazed window, panel enclosed bath, wash hand basin

First Floor

Landing

Doors to:

Bedroom

Front and rear aspect double glazed windows, radiator

Bedroom

Rear aspect double glazed window, radiator

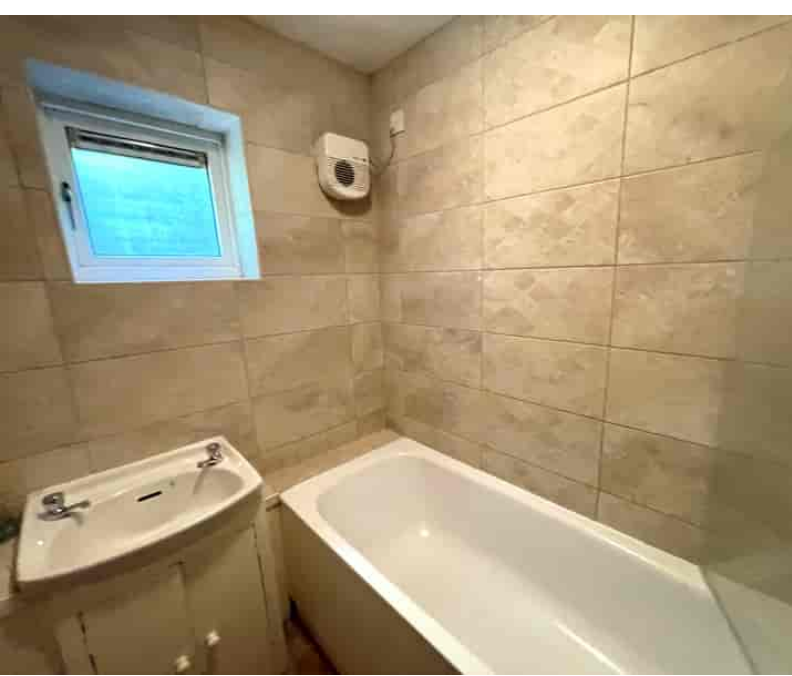
Cloakroom

Low level w.c, wash hand basin, double glazed window.

Outside

Rear Garden

Steps leading down to lawn area, side access via gate.

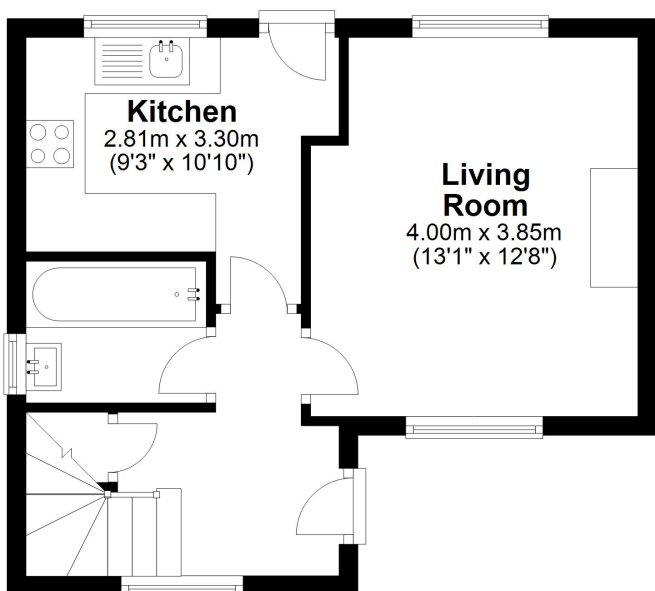


FLOORPLAN



Ground Floor

Approx. 32.9 sq. metres (354.5 sq. feet)

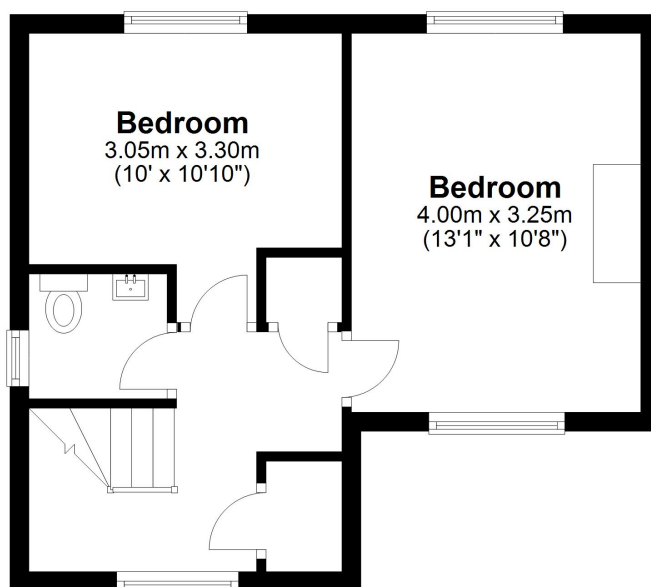


Kitchen
2.81m x 3.30m
(9'3" x 10'10")

Living Room
4.00m x 3.85m
(13'1" x 12'8")

First Floor

Approx. 32.1 sq. metres (345.9 sq. feet)



Bedroom
3.05m x 3.30m
(10' x 10'10")

Bedroom
4.00m x 3.25m
(13'1" x 10'8")

Total area: approx. 65.1 sq. metres (700.5 sq. feet)