



daniels
danielsestateagents.co.uk

daniels
danielsestateagents.co.uk



Bravington Road, Maida Vale, London W9 3AA
£345,000 - Leasehold



PROPERTY DESCRIPTION

NO UPPER CHAIN...

A ONE BEDROOM set on the first floor of this PERIOD BUILDING. The property requires modernisation and boasts SPACIOUS LIVING ROOM, DOUBLE BEDROOM, KITCHEN and FAMILY BATHROOM. Located on Bravington Road which offers easy access to the amenities on Harrow Road as well as easy access to both Queens Park and Portobello.

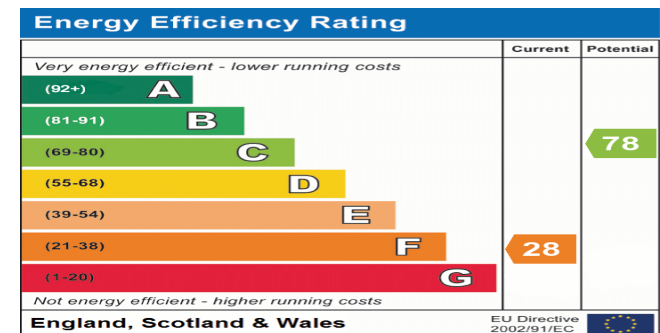
Numerous bus services are within close proximity.

Ground Rent is £10 per annum and we await service charge information.

Lease Term: 125 Years from 23rd January 1989.

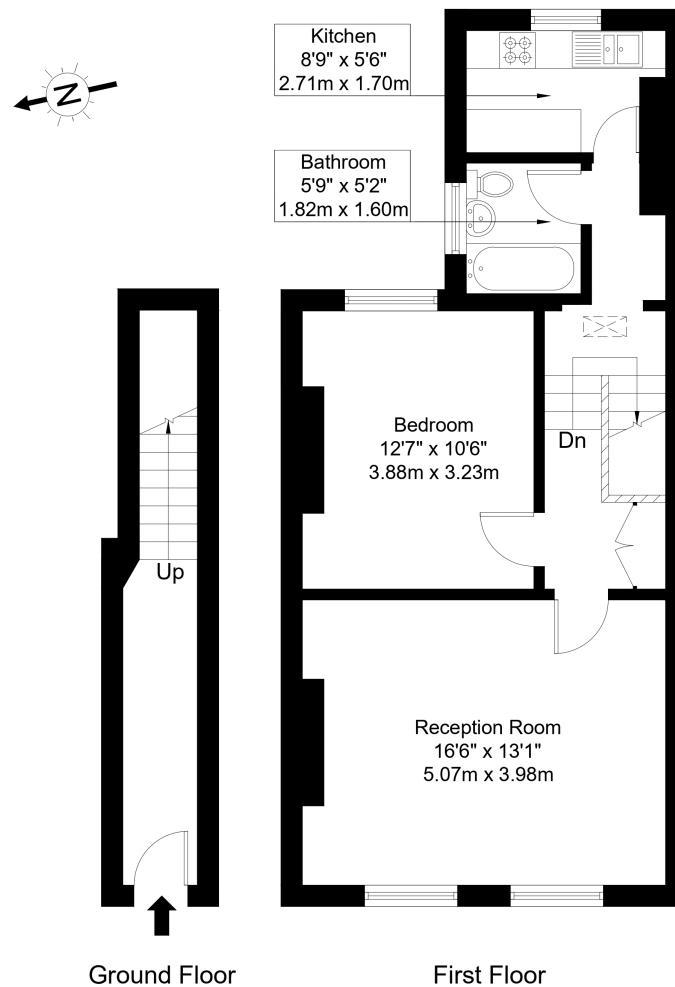
POINTS OF INTEREST

- ONE BEDROOM MAISONETTE
- PRIVATE ENTRANCE FROM STREET
- IN NEED OF MODERNISATION
- GREAT LOCATION
- EASY ACCESS TO QUEENS PARK STATION



Bravington Road, W9 3AA

Approx Gross Internal Area = 59 sq m / 635 sq ft



Ref :

Copyright **B L E U**
P L A N

The Floor plan is not to scale and measurements and areas shown are approximate and therefore should be used for illustrative purposes only. The plan has been prepared in accordance with the RICS code of Measuring Practice and whilst we have confidence in the information produced it must not be relied on. Maximum lengths and widths are represented on the floor plan. If there is any aspect of particular importance, you should carry out or commission your own inspection of the property.

Copyright @ BleuPlan