

FOR SALE

£750,000

Wood House, Napps Way, Heswall, Wirral. CH61 6US



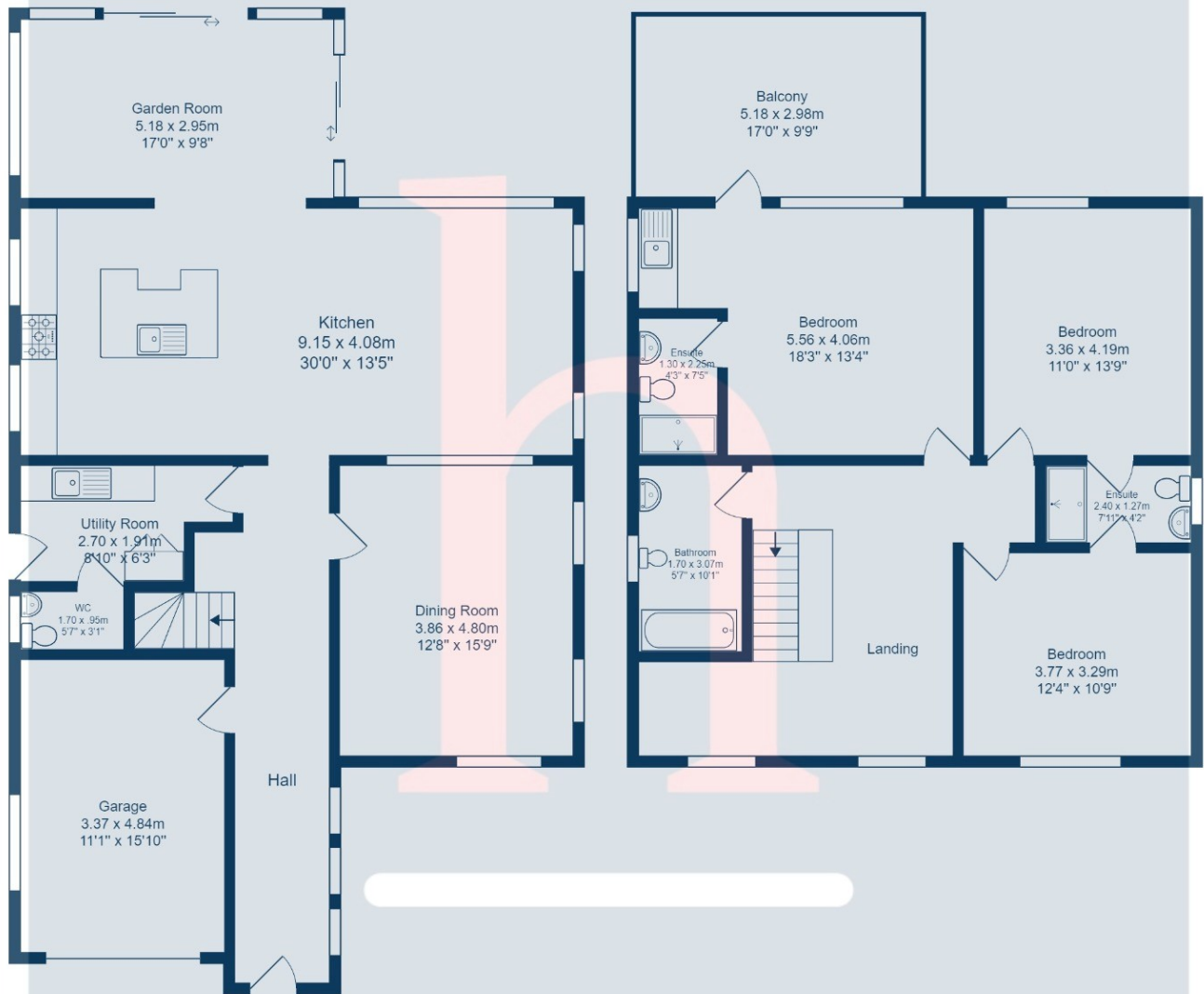
Architect Design Detached Home with Wonderful Views! This unique property has been built to offer a fantastic combination of space and light with a beautiful rear aspect overlooking rural farmland and far reaching views towards the Liverpool city skyline. Less than ten years old the property was designed and finished to an exacting standard with well planned accommodation including impressive open living spaces, three generous bedrooms with two en-suites and a fabulous roof terrace accessed from the master bedroom, a perfect position to fully maximise and enjoy the views from. With off road parking, integral garage, rear garden and Summer House the outside areas offer huge potential to create your ideal private oasis. Situated in a quiet, sought-after part of Heswall with easy access to local shops, schools, amenities and local transport links this really is a 'one of a kind' home not to be missed!





Ground Floor

1st Floor



Total Area: 199.5 m² ... 2147 ft² (excluding balcony)
All measurements are approximate and for display purposes only.