

£189,995
Leasehold



THOMAS CONNOLLY

ESTATE AGENTS | LETTING AGENTS | NEW HOMES | PROPERTY MANAGEMENT



Summary of Property

Thomas Connolly Estate Agents are delighted to present this one bedroom, first floor apartment for sale in the sought after location of Eagle Farm South, with Kingston Shopping District a mere five minute drive away and offering close proximity to new all through schooling, M1 transport routes and Red routes.

The accommodation in brief comprises of; entrance hall, open plan kitchen and sitting room, bedroom and bathroom. This property also benefits from parking for one car.

Please note the ground rent is £177 pa and the maintenance charge is £1259 pa.

Please contact us for further information or to confirm your viewing appointment.

Room Descriptions

FIRST FLOOR APARTMENT

ENTRANCE HALL

OPEN PLAN KITCHEN/SITTING ROOM

14' 6" x 13' 6" (4.42m x 4.11m)

BEDROOM

11' 2" x 10' 9" (3.40m x 3.28m)

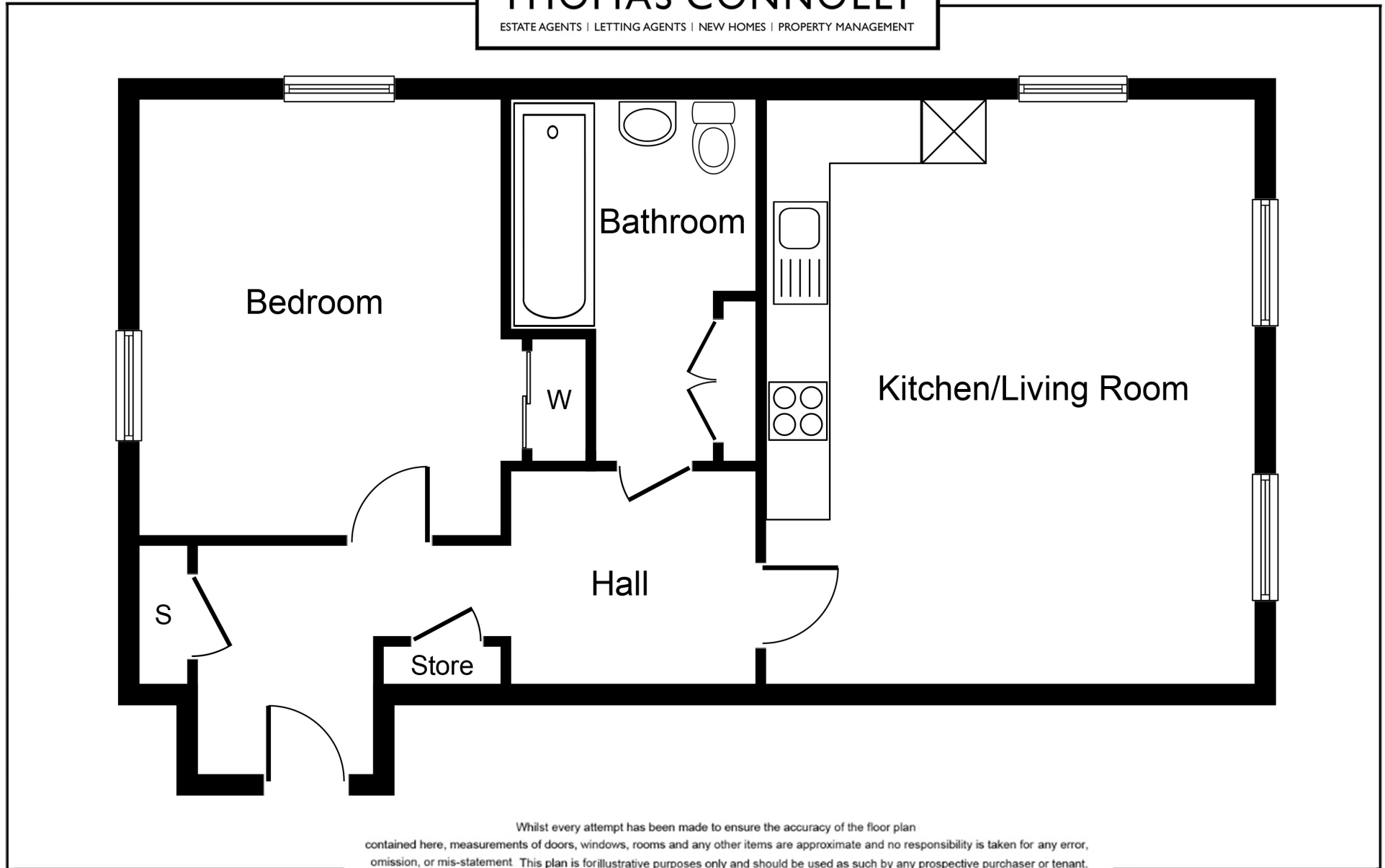
BATHROOM

ALLOCATED PARKING FOR ONE CAR

PLEASE NOTE

These property particulars do not constitute part or all of an offer or contract. All measurements are stated for guidance purposes only and may be incorrect. Details of any contents mentioned are supplied for guidance only and must also be considered as potentially incorrect. Thomas Connolly Estate Agents advise perspective buyers to recheck all measurements prior to committing to any expense. We confirm we have not tested any apparatus, equipment, fixtures, fittings or services and it is within the prospective buyers interests to check the working condition of any appliances prior to exchange of contracts. Thomas Connolly Estate Agents has not sought to verify the legal title of the property and the buyers must obtain verification from their solicitor

THOMAS CONNOLLY
ESTATE AGENTS | LETTING AGENTS | NEW HOMES | PROPERTY MANAGEMENT



Copyright V360 Ltd 2022 | www.houseviz.com