



Hammersmith Road, London, W14 8QQ

Cow & Co
LONDON



AVAILABLE FROM 1ST JULY 2024 charming two bedroom flat located on the second floor of an impressive mansion block moments from Kensington High Street. In good decorative order this superb property comprises of a spacious reception room with a sociable open plan kitchen, a generously sized master bedroom, a second double bedroom and a modern bathroom.

Argyle Mansions is well served by the amenities on Hammersmith Road, whilst the excellent range of shops, bars and restaurants on Kensington High Street are also nearby.

Transport links include Kensington Olympia (District Line and National Rail) West Kensington tube station (District Line) and High Street Kensington (District line and Circle line) The A4/M4 provides quick and easy access to routes in and out of central London.

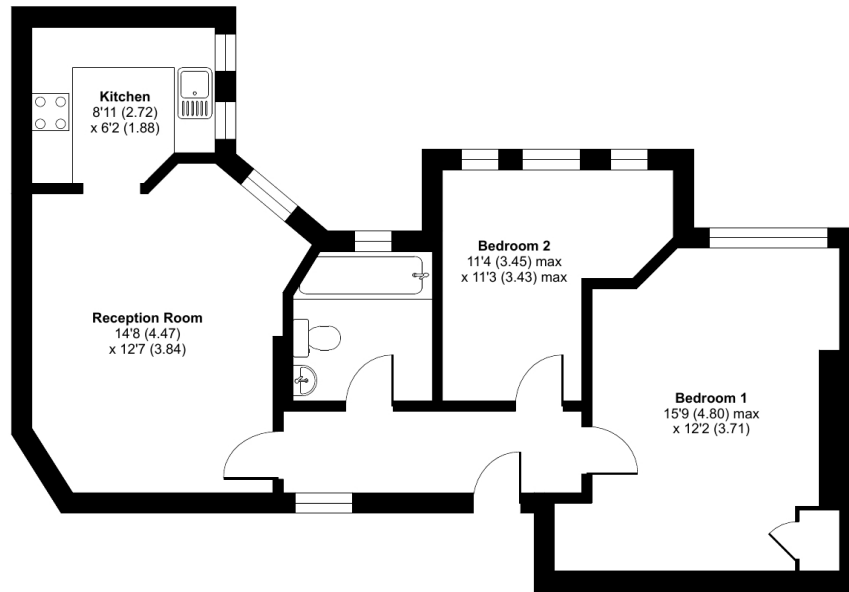


- Two bedroom apartment
- High Ceilings
- Close to Kensington High Street
- Large kitchen /dining room
- Close to Piccadilly and District Line Tube.
- Period character property
- Separate kitchen
- Spacious reception room with space to dine

Hammersmith Road, London, W14

Approximate Area = 676 sq ft / 62.8 sq m

For identification only - Not to scale



SECOND FLOOR



Floor plan produced in accordance with RICS Property Measurement Standards incorporating International Property Measurement Standards (IPMS2 Residential). © nchecon 2023. Produced for Cow & Co Properties Ltd. REF: 941925

Tel: 0208 065 0010
Email: thehub@cowandco-london.com
Web: cowandco-london.com

Agents note: All measurements are approximate and whilst every attempt has been made to ensure accuracy they are for general guidance only and must not be relied on. The fixture and fittings referred to have not been tested and therefore no guarantee can be given that they are in working order. Internal photographs are reproduced for general information and it must not be inferred that any item shown is included with the property.

Cow & Co
LONDON