

**Beechfield
Portarlington Road
Bournemouth, BH4 8BX**



****CASH BUYERS ONLY** First Floor two bedroom apartment with South facing balcony, garage and in need of updating and modernisation.**

Price guide £225,000 Leasehold







Situation & Description

Intercom system allows access into the building with stairs leading to the first floor landing, with a bright spacious entrance to the property.

The entrance hall leads through to the principle accommodation with large coat cupboard and airing cupboard. The living room has dual south facing aspect with outlook onto the well tended communal garden with door leading onto the south facing balcony. The kitchen has a range of eye and low level cupboard, freestanding Hotpoint washing machine, Hotpoint dishwasher and Creda oven with electric hob and extractor above.

There are two bedrooms, both benefiting from fitted wardrobes. The family bathroom has full tiled walls and three piece suite comprising low flush WC, wash hand basin with vanity unit above and panelled bath with shower above.

Outside: The block has well tended communal gardens with mature trees surrounding the border giving the block privacy. There is a garage in block and visitor parking on a first come first serve basis.

Service Charge: £1,500 per annum

Ground rent: £35 per annum

Pets allowed

Lease length: 99 years from 1971 (49 YEARS REMAINING)

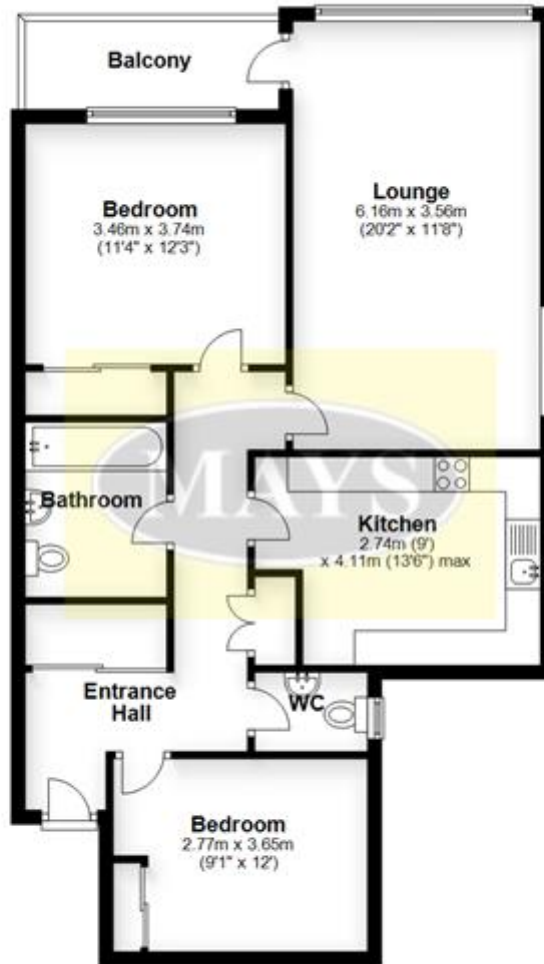
Council Tax Band: C

Features

- Two bedrooms
- South facing balcony
- Generous living accommodation
- Ample storage
- Garage in block
- GOLDEN GRID location
- In need of updating and modernisation throughout
- Gas central heating
- UPVC double glazing
- Pets allowed
- No forward chain

First Floor

Approx. 79.5 sq. metres (855.7 sq. feet)



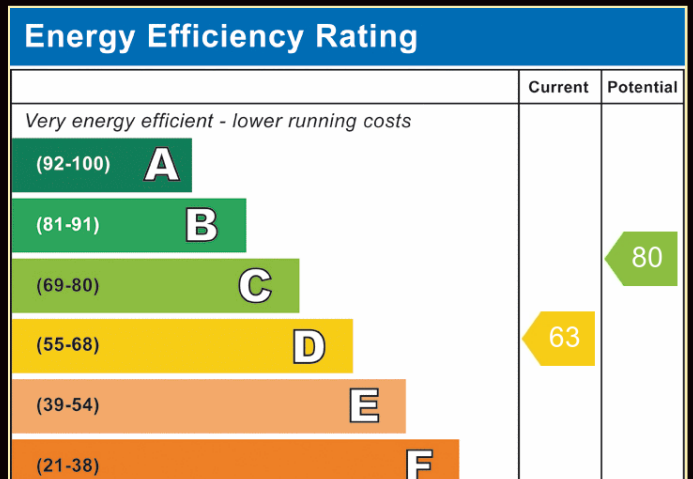
Total area: approx. 79.5 sq. metres (855.7 sq. feet)

Bournemouth Energy Floor Plans are provided for illustration/identification purposes only. Not drawn to scale, unless stated and accept no responsibility for any error, omission or mis-statement. Dimensions shown are to the nearest 7.5 cm / 3 inches. Total approx area shown on the plan may include any external terraces, balconies and other external areas. To find out more about Bournemouth Energy please visit www.bournemouthenergy.co.uk (Tel: 01202 556006)

Plan produced using PlanUp.







IMPORTANT NOTICE:

Mays and their clients give notice that:

1. They have no authority to make or give any representations or warranties in relation to the property. These particulars do not form part of any offer or contract and must not be relied upon as statements or representations of fact.

2. Any areas, measurements or distances are approximate. The text, photographs and plans are for guidance only and are not necessarily comprehensive. It should not be assumed that the property has all necessary planning, building regulation or other consents and Mays have not tested any services, equipment or facilities. Purchasers must satisfy themselves by inspection or otherwise.

New Developments (where applicable)

Plans and specification are subject to change during the course of construction. All measurements are approximate. The developers reserve the right to alter and amend the information given in these particulars as necessary. Nothing contained herein shall be, or shall be deemed to be, part of any contract. The approximate dimensions quoted indicate the maximum room sizes and are scaled from plans before construction has commenced. They are not intended to be used for carpet sizes, appliance spaces or items of furniture.