



Whitehill Close, CAMBERLEY, Surrey GU15 4JR

PRICE £825,000 Freehold

DETACHED FAMILY HOME WITH A ONE BEDROOM SELF CONTAINED ANNEXE BACKING DIRECTLY ONTO WOODLAND! Jigsaw Estates are excited to present to the market this detached family home situated in a quiet cul-de-sac position within walking distance of local schools and Camberley town centre.

The property occupies a generous corner plot and offers versatile accommodation including four bedrooms in the main house, a living room, study and a stunning open plan and extended kitchen/breakfast/family room with central island seating area, bi-fold doors onto the rear garden and a log burner. Further benefits include a downstairs shower room which also doubles as a utility room, gas central heating and Upvc double glazing.

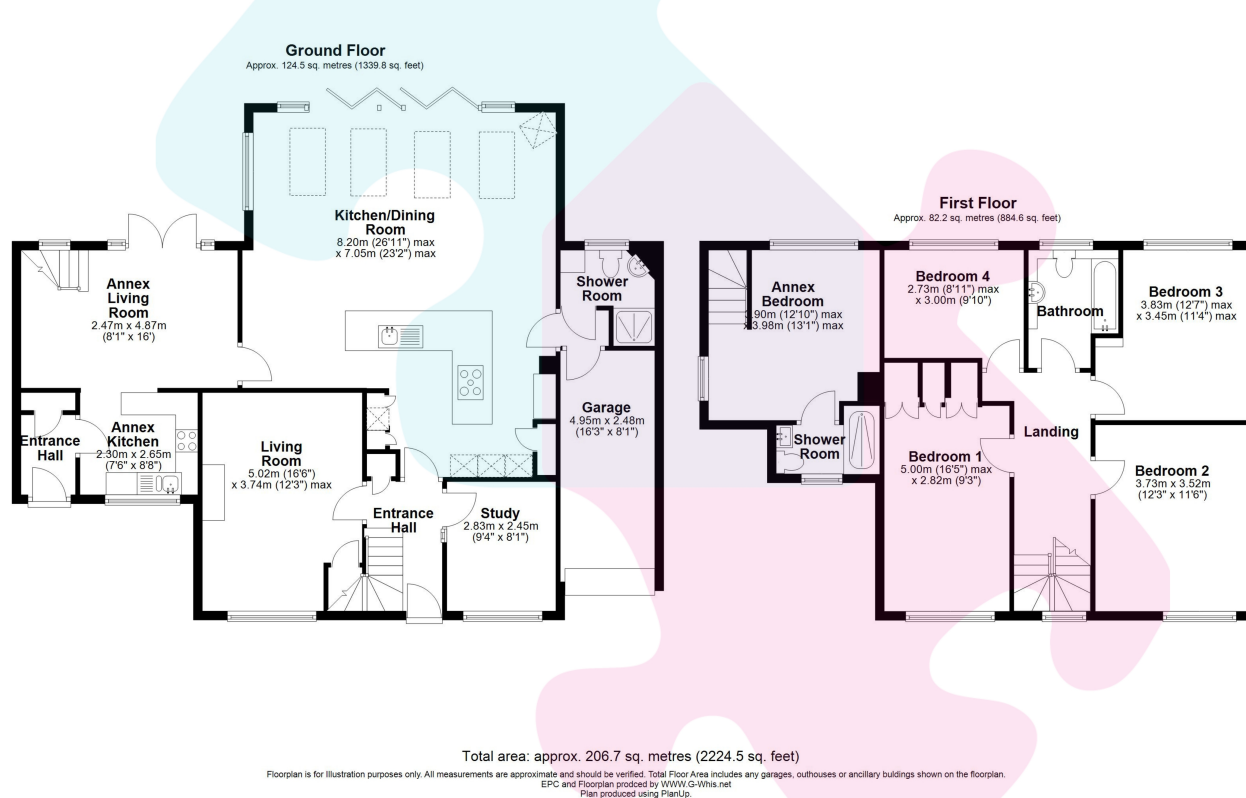
The property also has a one bedroom self contained annexe with its own private entrance. The accommodation of the annexe comprises a lounge and kitchen area on the ground floor with a double bedroom and en-suite shower room upstairs.

The beautiful garden wraps around the property and backs directly onto the woodland with a gate giving direct access making it ideal for dog owners and families. The garden offers a number of secluded seating areas and is surrounded by mature flower, shrub and hedge borders. There is also side access to the front of the property.

The front offers a driveway directly in front of the garage offering ample off street parking with the rest of the front garden



- BACKS ONTO WOODLAND WITH GATE ACCESS
- FOUR BEDROOMS IN MAIN HOUSE
- LIVING ROOM & STUDY
- CLOSE TO TOWN CENTRE
- 1 BEDROOM SELF CONTAINED ANNEXE
- STUNNING OPEN PLAN KITCHEN/DINING/ FAMILY ROOM
- CORNER PLOT WITH BEAUTIFUL GARDEN
- CLOSE TO LOCAL SCHOOLS



Energy Efficiency Rating		Current	Potential
Very energy efficient - lower running costs			
(92+)	A	65	74
(81-91)	B		
(69-80)	C		
(55-68)	D		
(39-54)	E		
(21-38)	F		
(1-20)	G		
Not energy efficient - higher running costs			
England, Scotland & Wales		EU Directive 2002/91/EC	