



194 Harlow Crescent, Oxley Park, Milton Keynes, Bucks, MK4 4JA

£140,000 Leasehold

- 80% shared equity
- One bedroom
- Ground floor apartment
- Communal garden areas
- Allocated parking
- Desirable location of Oxley Park
- Good storage space
- Stylish fitted kitchen
- EPC Rating C





**** NO RENT PAYABLE SHARED EQUITY NOT SHARED OWNERSHIP**** Elevation are pleased to present a one double bedroom ground floor apartment in the highly sought after area of Oxley Park to the west of Milton Keynes available on a 80% shared equity. In brief the accommodation comprises entrance hall, lounge and stylish fitted kitchen, one spacious bedroom and modern bathroom suite. Outside are communal gardens and allocated parking. Built by Charles Church Homes and considered one of their best sellers. This is an ideal first time home. Please call elevation today to register your interest.

Energy Efficiency Rating		Current	Potential
Very energy efficient - lower running costs			
(92 to 100)	A		
(81 to 91)	B		
(69 to 80)	C	78	78
(55 to 68)	D		
(39 to 54)	E		
(21 to 38)	F		
(1 to 20)	G		
Not energy efficient - higher running costs			
England, Wales & N.Ireland		EU Directive 2002/91/EC	

INTERIOR

Entrance Hall

Doors leading to:

Kitchen

4.43m x 3.47m (14' 6" x 11' 5")

Lounge Area

2.92m x 2.80m (9' 7" x 9' 2")

Bedroom

3.54m x 3.10m (11' 7" x 10' 2")

Bathroom

Fitted to comprise three piece suite

EXTERIOR

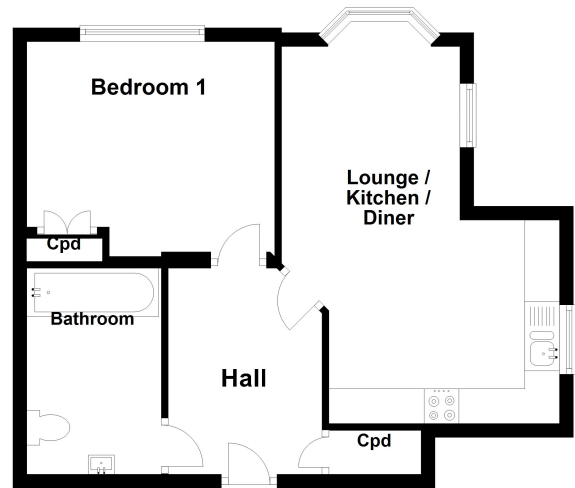
Allocated Parking

Space for one vehicle

Disclaimer

Whilst we have endeavoured to prepare our sales particulars accurately none of the services, appliances or equipment have been tested. A buyer should satisfy themselves on such matters prior to purchase. Any measurements or distances mentioned in these particulars are for guide reference only. If such particulars are fundamental to a purchase, buyers should rely on their own enquiries. All enquiries should be directed to Elevation Estate Agents in the first instance.

Ground Floor



elevation estate agents
Plan produced using PlanUp.