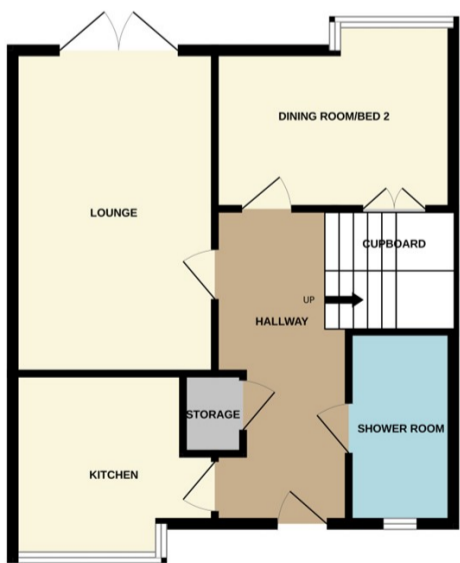




Bourne

£200,000



*****GREAT COMMUNITY SURROUNDING THE PROPERTY***** Offers are invited in excess of £200,000 for this versatile over 55s property on a modern development called the Croft. The Croft was designed to improve all the residents social interaction and to incorporate a good neighbourhood. There are social events weekly and the gardens are all very well kept by the management company. The property comprises of two floors with flexible living. On the ground floor there is a kitchen, lounge/diner, bedroom 2/separate dining room and shower room. Upstairs there is a substantial dual aspect main bedroom with built in wardrobes and an ensuite. The property is being sold with no onward chain and is very presentable. To fully appreciate this home viewings are highly recommended. EPC Energy Rating C / Council Tax Band B