



## Queen Street

Wilshere Court | Hitchin | Hertfordshire | SG4 9TT

[www.stonegate-estates.co.uk](http://www.stonegate-estates.co.uk)



# QUEEN STREET

---

## Property Description

We are delighted to offer for sale this two double bedroomed second floor retirement property.

The apartment is situated within the town centre and therefore offers easy access to all local amenities. There is a generous living room with a Juliet balcony, a fitted kitchen, two double bedrooms with fitted wardrobe, a bathroom with a separate shower and built in storage cupboards.

This well regarded development offers a communal lounge and laundry along with gardens to the front and rear. Parking is also to be found at the front and there is also the added benefit of a on site development manger.

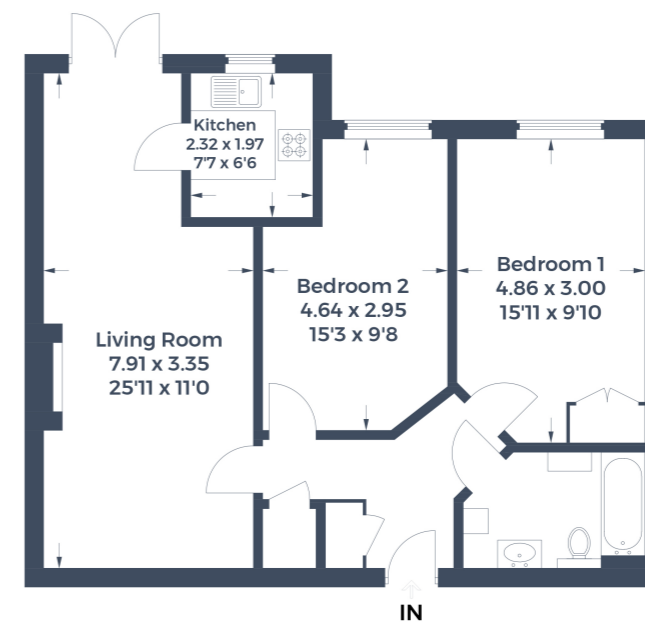
Viewing is strongly recommended.

**£325,000 Leasehold**





Approximate Gross Internal Area  
70.6 sq m / 760 sq ft



This plan is for layout guidance only. Not drawn to scale unless stated. Windows and door openings are approximate. Whilst every care is taken in the preparation of this plan, please check all dimensions, shapes and compass bearings before making any decisions reliant upon them.  
© CJ Property Marketing Produced for Stonegate Estates



- Two Bedroom Retirement Apartment
- 2nd Floor flat
- Lift to all Floors
- Communal Gardens
- Excellent Condition
- Laundry Facilities
- Residence Lounge
- Careline 24hr System

EPC Rating:

Stonegate Estate Agents

01462 438979

[sales@stonegate-estates.co.uk](mailto:sales@stonegate-estates.co.uk) | [www.stonegate-estates.co.uk](http://www.stonegate-estates.co.uk)

