



Low Hall Cottage | Whittington





3  3   
2  3+ 

 **lunevalley**  
ESTATES.



EPC - D



Band E



Freehold





This remarkable property, originally built pre-1900s, but extensively remodelled in the 1970s and fully renovated within the last decade, presents a unique opportunity to create a magnificent family home. Prepare to be captivated by the surprises that await you beyond the inviting exterior, as this splendid three-bedroom, two-bathroom residence boasts an exceptionally spacious layout that is rarely found in modern homes.

Upon entering, you will immediately appreciate the meticulous attention to detail and the impeccable taste that permeate every corner of this residence. Exposed timbers and beamed ceilings contribute to the overall charm and character of the home, creating a warm and inviting atmosphere.



The kitchen, a true highlight, showcases a high-quality finish and features a range of units with elegant granite worktops and upstands. Equipped with top-of-the-line appliances, including a Britana range oven with five gas hobs and extractor, integrated dishwasher, microwave, fridge, and freezer, this kitchen is a dream for any culinary enthusiast. The adjoining dining area provides ample space for a large table accommodating up to six people, making it perfect for hosting gatherings and creating lasting memories.



Step down into the heart of the home, the living room, where you'll find a splendid stone fireplace and a multi-fuel stove. This spacious room offers an ideal setting for family relaxation and entertainment, with two deep bay windows that provide delightful views of the well-maintained front elevation and the rolling field beyond. Adjacent to the living room, a utility room and cloakroom offer additional convenience, complete with their own separate entrance to the garden. Fitted with cupboard units and equipped with space for a washing machine and dryer, the utility room also features a complimentary worktop. Beyond the utility area lies a practical WC with a sink unit, further enhancing the functionality of this exceptional home.

Ascending to the upper level, you'll find a generously proportioned landing allowing access to the first floor bedrooms. The house bathroom is tastefully tiled and features a luxurious four-piece suite, including a separate shower cubicle and a spa bath, creating a serene retreat for relaxation. Low Hall Cottage offers three excellent bedrooms, each showcasing unique characteristics and benefiting from an abundance of natural light that illuminates the space and provides pleasant views of the garden.

At the end of the landing awaits the magnificent master bedroom suite, a tranquil sanctuary designed to provide respite from the hustle and bustle of everyday life. Delight in the panoramic open views of the surrounding countryside as you enjoy the convenience of a dedicated three-piece suite, comprising a walk-in shower, vanity sink, and WC. The exquisite finishes, including complimentary tiling and an LED illuminated Bathroom Mirror, add a touch of luxury to this private haven.

Ascending to the upper level, you'll find a generously proportioned landing allowing access to the first floor bedrooms. The house bathroom is tastefully tiled and features a luxurious four-piece suite, including a separate shower cubicle and a spa bath, creating a serene retreat for relaxation. Low Hall Cottage offers three excellent bedrooms, each showcasing unique characteristics and benefiting from an abundance of natural light that illuminates the space and provides pleasant views of the garden.

Outside, as you approach the property, you'll be greeted by a spacious driveway offering ample off-road parking for multiple vehicles. The front of the house features a paved patio area, complete with a hot tub to be included in the sale, creating the perfect setting for outdoor entertainment and relaxation. To the side of the property, a mature lawned area beckons, accompanied by an outhouse shed that presents a versatile space ideal for storage or the creation of a charming summer house. Situated on the outskirts of the sought-after village of Whittington, Low Hall Cottage benefits from its proximity to open fields and enjoys delightful southerly views.





## Kitchen/Diner

Step into the impressive kitchen/dining room and prepare to be enamoured by the craftsmanship and tasteful design. This spacious area showcases a seamless blend of traditional charm and modern convenience. Exposed timbers and beamed ceilings exude character, while the high standard of finish is evident throughout. The kitchen is a chef's delight, featuring an extensive range of units with elegant granite worktops and upstands. Equipped with top-of-the-line appliances, including a Britana range oven with gas hobs and extractor, integrated dishwasher, microwave, fridge, and freezer, this kitchen is fully prepared to meet all your culinary needs. The ample space allows for a large dining table, comfortably seating up to six people, making it the perfect spot for memorable family meals and entertaining guests.

## Living Room

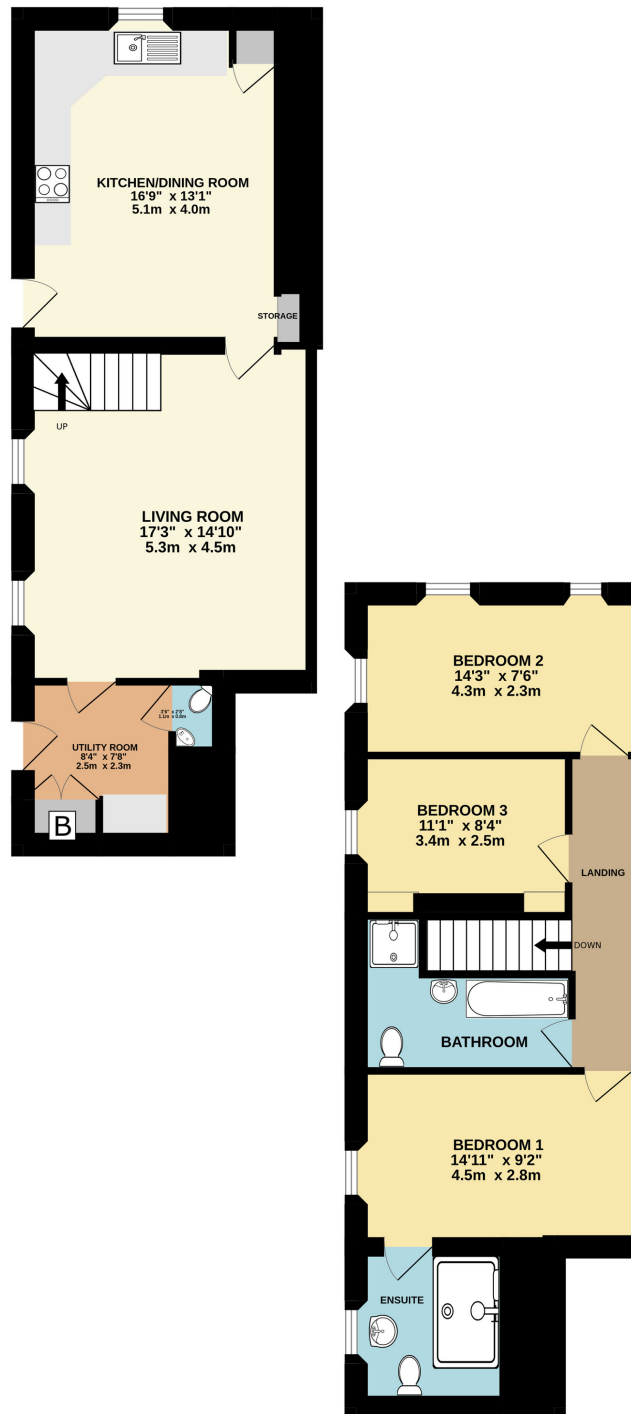
As the heart of the home, the living room offers a welcoming and inviting atmosphere for relaxation and enjoyment. This generously proportioned room boasts a fine stone fireplace and a multi-fuel stove, creating a cozy ambiance. The abundant space allows for various seating arrangements, accommodating both family gatherings and social entertaining. Two deep bay windows provide picturesque views of the garden, filling the room with natural light and further enhancing the overall appeal of this delightful living space.

## Utility Room

Conveniently located adjacent to the living room, the utility room is a practical area that offers valuable storage and additional functionality to the home. Fitted with cupboard units and thoughtfully designed, the utility room provides space for a washing machine and dryer, ensuring efficient household management. With a complimentary worktop, it offers a convenient space for various tasks. The utility room also features its own rear entrance, allowing easy access to the garden, making it an ideal transition area for outdoor activities.

## Bathroom

Immerse yourself in the epitome of luxury in the bathroom at Low Hall Cottage, where breathtaking views of the surrounding hills take centre stage. This exquisite space not only indulges the senses with its refined design and premium finishes but also treats you to a visual feast of nature's beauty. As you soak in the freestanding tub or enjoy the invigorating shower, be captivated by the panoramic vistas that unfold before your eyes. Gaze upon the rolling hills and immerse yourself in a serene and picturesque ambiance, creating a truly remarkable bathing experience that seamlessly blends relaxation with the splendour of the natural surroundings.



## Bedroom One

Discover a tranquil haven within the splendid master bedroom. This spacious retreat is thoughtfully designed to provide a peaceful escape from the demands of daily life. Flooded with natural light, the room enjoys delightful aspects of the garden. The master bedroom features ample space for a comfortable bed and additional furnishings, allowing for a personal touch. It offers a serene atmosphere to relax and unwind, ensuring a restful night's sleep. The master en suite of Low Hall Cottage is a luxurious and private retreat. With fine countryside views, it features a well-appointed three-piece suite, including a walk-in shower, vanity sink, and WC. Tasteful tiling and an LED illuminated bathroom mirror add to the elegant ambiance. Impeccably presented, this serene space offers a harmonious blend of comfort and style, creating a truly indulgent experience.

## Bedroom Two

Bedroom two presents a cozy and inviting space for its occupants. This well-proportioned room is flooded with natural light, creating an airy and cheerful ambiance. Offering versatility in its layout, it can easily accommodate a bed and a study area or additional seating, catering to individual needs and preferences. With its pleasant views and comfortable atmosphere, this room provides a comfortable retreat for relaxation and personal pursuits.

## Bedroom Three

Bedroom three offers a charming and bright space that is full of character. The floods of light that enter the room create a warm and inviting atmosphere. The well-designed layout allows for various furniture arrangements, ensuring flexibility in its use. Whether utilised as a bedroom, a home office, or a hobby room, this versatile space can be personalised to suit your needs. With its pleasing dimensions and captivating ambiance, it presents a cozy and comfortable retreat within the home.

## External

The front elevation of Low Hall Cottage is a picturesque sight, combining timeless charm with modern comforts. A welcoming driveway invites you upon arrival, providing ample off-road parking for multiple vehicles. The paved patio area, nestled in the front, offers a delightful space for outdoor relaxation and entertainment, complete with a hot tub that is included in the sale. This addition brings a touch of luxury and serves as a perfect spot to unwind and enjoy the surroundings. With its meticulous landscaping and thoughtfully designed elements, the front elevation of Low Hall Cottage seamlessly blends convenience, aesthetic appeal, and a touch of indulgence.

# The Essentials



The Sun Inn  
*2.5 miles*



BOOTHS  
*2.2 miles*



Royal Hotel  
*2.4 miles*



Boots  
Pharmacy  
*2.5 miles*





# lunevalley

ESTATES.



*Scan to visit our website!*

Suite 8, Willow Mill, Caton, LA2 9RA  
01524 256625  
team@lunevalleyestates.com  
lunevalleyestates.com