

2 Bedroom(s), Semi-Detached House, Freehold

Castledine Court, Woodfield Plantation,



- 3D Virtual Tour Available
- Two Bedroom Semi Detached Home
- Lounge
- Family Bathroom
- Popular Location

- No Chain
- Driveway and Garage
- Kitchen Diner
- Rear Enclosed Garden
- Local Amenities, Schools and Transport Links

£170,000
For Sale

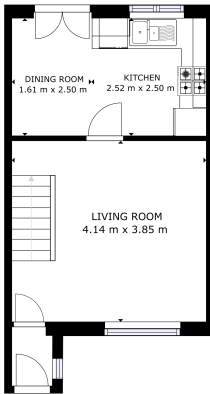
Book your viewing today Tel: 01302 247754

Owner's View

Offered with no onward chain, this well-presented 2 bedroom semi-detached home is located on a quiet cul-de-sac in the popular area of Balby, Doncaster. The property features a driveway and detached garage, providing ample off-road parking. To the rear, you'll find a generous garden space—perfect for entertaining or relaxing in the warmer months. Inside, the accommodation includes a bright lounge, a spacious kitchen diner, two good-sized bedrooms, and a family bathroom. Ideal for first-time buyers, downsizers or investors, this property is ready to move into and located close to local amenities, schools, and transport links.

Ground Floor

Floor Plan



Matterport

Kitchen

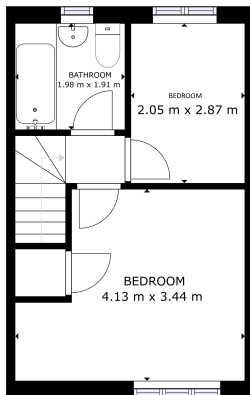


Lounge



First Floor

Floor Plan



FLOOR 1

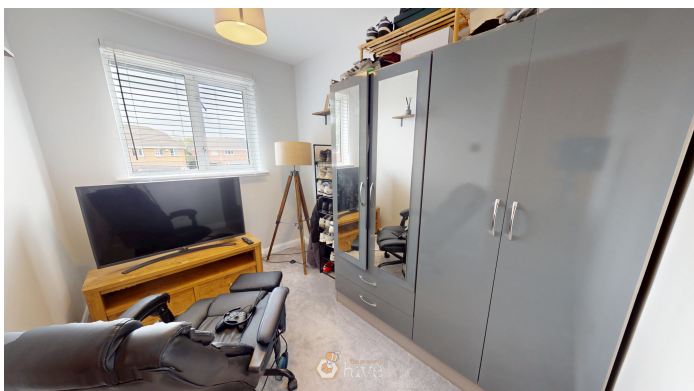
CREDA HOMES AREA:
FLOOR 1: 23.08 m², FLOOR 2: 35.44 m²
TOTAL: 58.52 m²
FIGURES ARE APPROXIMATE AND SHOULD BE VERIFIED BEFORE EXCHANGE OF CONTRACTS.



Bedroom



Bedroom



Bathroom



Externals

Front Aspect



Rear Garden



Property Information

Council Tax Band - B

Utilities - Mains Gas, Mains Electricity, Mains Water

Water Meter - No

Tenure - Freehold

Solar Panels - No

Space Heating System - Gas Boiler with radiators

All measurements provided are approximate and should be verified before exchange of contracts. No appliances have been tested and should be checked to ensure they are in good working order.



Approximate Heating System Installation Date -
Water Heating System - Gas Boiler (Hot Water Tank)
Approximate Water Heating Installation Date -
Boiler Location - Upstairs
Approximate Electrical System Installation Date -
Permanent Loft Ladder - No
Loft Insulation - Yes
Loft Boarded out – Yes

Whilst every effort is made to ensure that the information contained in these particulars is reliable, they do not constitute or form part of an offer or any contract. The Property Hive accept no liability for the accuracy of the contents, and therefore they should be independently verified by prospective buyers or tenants before agreeing an offer. All measurements provided are approximate and should be verified before exchange of contracts. No appliances, fixtures or fittings have been tested and should be checked by the buyer before exchange of contracts to ensure they are in good working order.

Energy Performance Certificate

