



**daniels**  
danielsestateagents.co.uk

**daniels**  
danielsestateagents.co.uk





**Buckingham Yard, Buckingham Road, Harlesden, London NW10 4RL**  
**£170,000 - Leasehold**



## PROPERTY DESCRIPTION

NO UPPER CHAIN...

A SPACIOUS STUDIO MAISONETTE set on the FIRST FLOOR of this PURPOSE BUILT DEVELOPMENT. The property requires modernisation and boasts STUDIO ROOM with OPEN PLAN KITCHEN AREA, SEPARATE SLEEPING AREA and PART REFURBISHED SHOWER ROOM. The property also offers an ALLOCATED PARKING SPACE.

Ground Rent is £10 per annum and we are awaiting confirmation of service charge amounts.

Amenities on High Street Harlesden are close by and also WILLESDEN JUNCTION bakerloo and overground station is within close proximity.

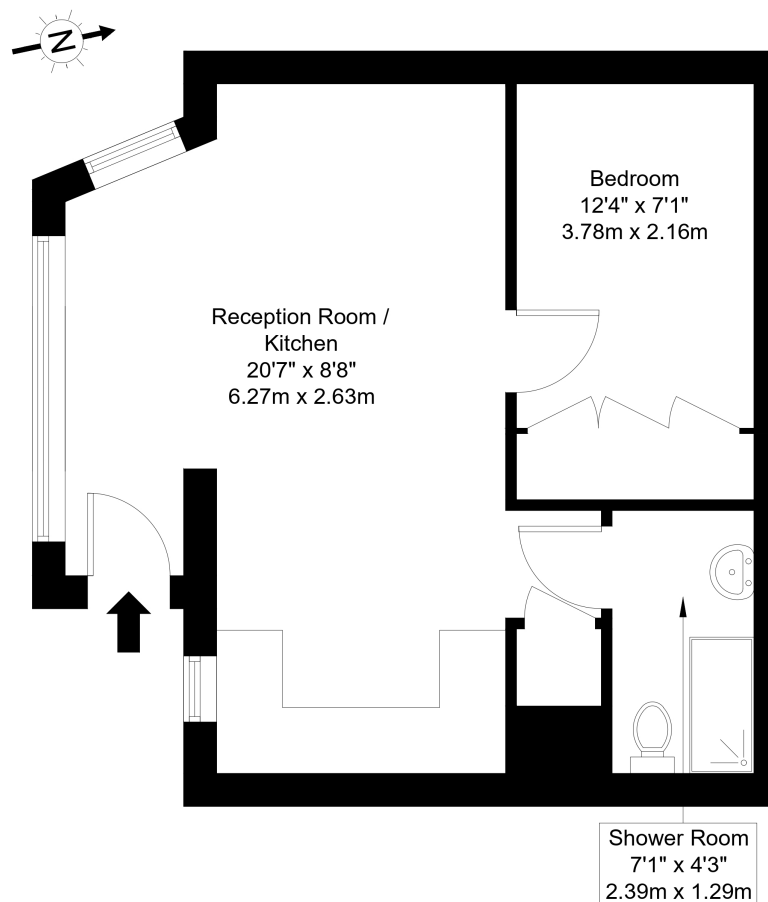
LEASE TERM: 125 years from 1 January 1989.

## POINTS OF INTEREST

- SPACIOUS STUDIO FLAT
- SEPARATE SLEEPING AREA
- FIRST FLOOR MAISONETTE
- PARKING SPACE

## Buckingham Road, NW10 4RL

Approx Gross Internal Area = 35.74 sq m / 385 sq ft



### First Floor

Ref :

Copyright **BLEU  
PLAN**

The Floor plan is not to scale and measurements and areas shown are approximate and therefore should be used for illustrative purposes only. The plan has been prepared in accordance with the RICS code of Measuring Practice and whilst we have confidence in the information produced it must not be relied on. Maximum lengths and widths are represented on the floor plan. If there is any aspect of particular importance, you should carry out or commission your own inspection of the property.  
Copyright @ BleuPlan